

## Standard Bearing Hinges

### Finishes



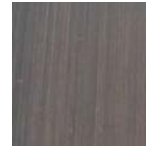
Brass  
(US3-4)



Antique Brass  
(US5)



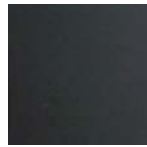
Oil Rubbed  
Bronze (US10B)



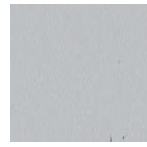
Black Chrome  
(US17)



Matt Black  
(US1D)



White Zinc  
(US2D)



Satin Chrome  
(US26D)



Satin Nickel  
(US15)



Antique Black  
Nickel (US15A)



Yellow Zinc



**Quadrex Head  
Screws**

### Features:

- ▶ Standard bearing hinge is economical.
- ▶ All hinges are 4" x 4" with 1 leaf square and 1 leaf 5/8" radius.
- ▶ Hinge thickness is 2.5mm.
- ▶ Matching screws with quadrex head included (4 x 5/8" and 4 x 1 1/4").
- ▶ Matching 3" installation screws included.
- ▶ 1/8" or 1/16" swage, assembled or unassembled.
- ▶ Packaged: Assembled hinges - 50 hinges/box; Unassembled hinges - 100 hinges/box.
- ▶ Outswing (NRP) available.

Aribell stocks standard bearing hinges as per specific customer requirements.