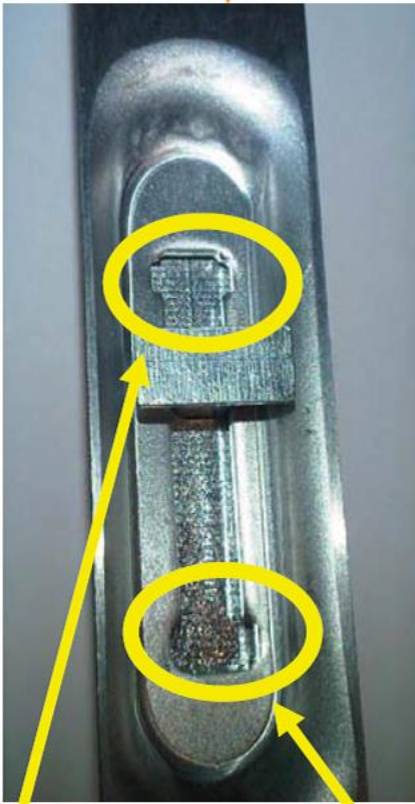




Locking Flush Bolts

New!
Improved
Design



Innovative design allows flush bolt to lock in open or closed position restricting forced entry.



	<u>Part #</u>	<u>Finish</u>
1	FBL-ORB	Oil Rubbed Bronze (US10B)
2.	FBL-BC	Black Chrome (US17)
3.	FBL-AN	Antique/Black Nickel (US15A)
4.	FBL-SN	Satin Nickel (US15)
5.	FBL-SC	Satin Chrome (US26D)
6.	FBL-BR	Bright Brass (US-3)

Features:

- ▶ Same size as industry standard flush bolts (6" Mortise)- No need for special machining.
- ▶ Locking mechanism restricts forced entry and prevents upper bolt from unintended sliding down into open position.
- ▶ Fits Aribell's pre-notched wood and foam PVC astragals.
- ▶ Packaged 100 flush bolts/ carton.
- ▶ Keepers and matching screws included.