

Vent Stops



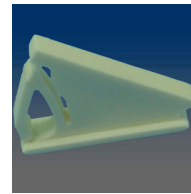
MODEL:1720

Vent stop, fitting slot .189" x 1.063", fit 1.7mm to 2.1mm wall thickness.



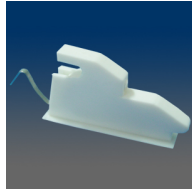
MODEL:1721

Vent stop, fitting slot .17" x 1.0433", fit 1.7mm to 2.1mm wall thickness.



MODEL:1722

Vent stop, fitting slot .201" x 1.063", fit 1.7mm to 2.1mm wall thickness.



MODEL:1723

Vent stop, fitting slot .17" x 1.063", fit 1.7mm to 2.1mm wall thickness.



MODEL:1730

Vent stop, fitting slot .177" x 1.11"



MODEL:1718

Vent stop, fitting slot .285" x 1.875", fit 1.7mm to 2.1mm wall thickness.



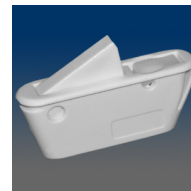
MODEL:1719

Vent stop, fitting slot .313" x 1.563", fit 1.7mm to 2.1mm wall thickness.



MODEL:1719S

Vent stop, with stainless spring, with the tongue open when packing



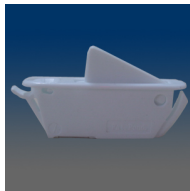
MODEL:1759

Vent stop, fitting slot .313" x 1.563", fit 1.7mm to 2.1mm wall thickness



MODEL:1753

Vent stop, fitting slot .285" x 1.875", fit 1.7mm to 2.0mm wall thickness



MODEL:1754

Vent stop, fitting slot .285" x 1.875", accommodate multiple vinyl wall thickness



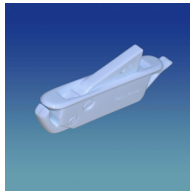
MODEL:1750

Vent stop, fitting slot .307" x 2.047", fit 1.5mm to 1.8mm wall thickness



MODEL:1756

Vent stop, fitting slot .285" x 1.875", fit 1.7mm to 2.0mm wall thickness



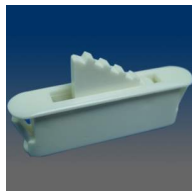
MODEL:1760

Vent stop, fitting slot .285" x 1.875", accommodate multiple vinyl wall thickness



MODEL:1763

Vent stop, fitting slot .285" x 1.875", accommodate multiple vinyl wall thickness, with a higher tongue projection



MODEL:1712

Vent stop, fitting slot .285" x 1.875", fit 1.7mm to 2.0mm wall thickness.



MODEL:1713

Vent stop, fitting slot .285" x 1.875", fit 1.7mm to 1.9mm wall thickness.



MODEL:1714

Vent stop, fitting slot .285" x 1.875", fit 1.7mm to 2.0mm wall thickness.



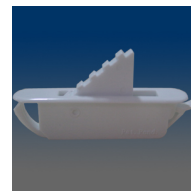
MODEL:1715

Vent stop, fitting slot .285" x 1.875", fit 1.3mm to 1.5mm wall thickness.



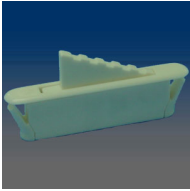
MODEL:1716

Vent stop, fitting slot .285" x 1.875", fit 1.7mm to 2.0mm wall thickness.



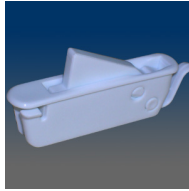
MODEL:1762

Vent stop, fitting slot .285" x 1.898", accommodate multiple vinyl wall thickness, match extrusion of adjustable thickness



MODEL:1711

Vent stop, fitting slot .22" x 1.875", fit 1.7mm to 2.1mm wall thickness.



MODEL:1758

Vent stop, non-polished finish