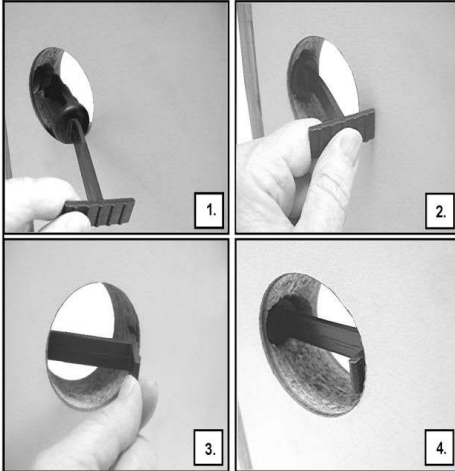


Quick Plug - "T" or "Hook" end

Quick Plug with T



Quick and Easy

Features:

- ▶ Easy Installation.
- ▶ Works on doors without a side jamb bore.
- ▶ Works on french doors and doors with sidelites.
- ▶ Backset either 2 3/8" or 2 3/4"



Quick Plug with Hook



How it Works:

1. Insert Quick Plug into face bore.
2. Bend the longer leg of the "T" or the "hook" and completely insert the barrel into the latch hole.
3. Complete installation by pushing and applying pressure on the longer leg to secure the Quick Plug into the backset hole of the jamb.
4. This ensures enough tension to maintain a secure door slab in the frame.

Part #s

ABTR-QP2-3/8H - Hook End 2 3/8" Backset
ABTR-QP2-3/4H - Hook End 2 3/4" Backset
ABTR-QP2-3/8T - "T" End 2 3/8" Backset
ABTR-QP2-3/4T - "T" End 2 3/4" Backset

(packaged 1,000 pcs/box)