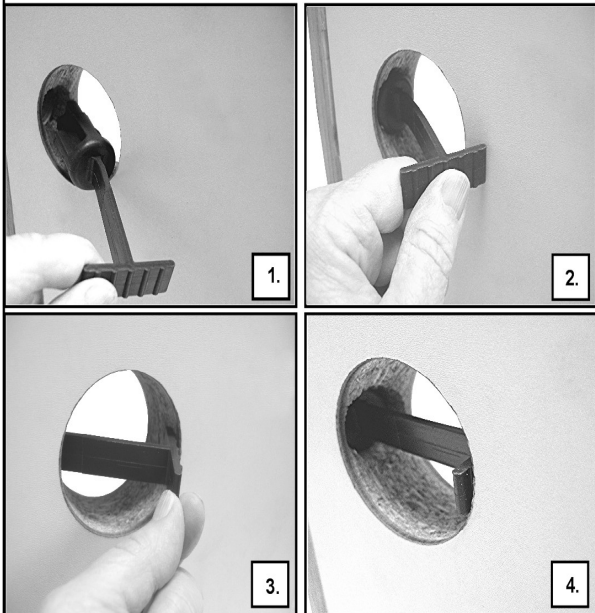
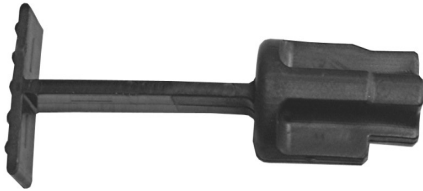




Secure-It-Fast

Protective Packaging Solutions

Quick Plug with T



Quick and Easy

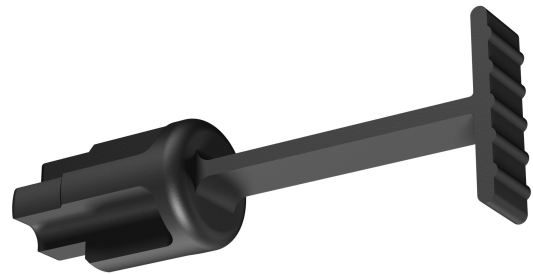
ABTR-QP2-3/8T:
"T" End 2 3/8" Backset
(packaged 1,000 pcs/box)

ABTR-QP2-3/4T:
"T" End 2 3/4" Backset
(packaged 1,000 pcs/box)



Aribell

Quick T-Plugs



These are a One-Piece Door Plug solution for doors without a through side jamb bore.

How It Works:

1. Insert Quick Plug into face bore.
2. Bend the longer leg of the "T" and completely insert the barrel into the latch hole.
3. Complete installation by pushing and applying pressure on the longer leg to secure the Quick plug into the backset hole of the jamb.
4. This ensures enough tension to maintain secure door slab in the frame.