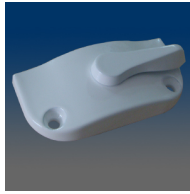


Locks



MODEL:4420



MODEL:3622



MODEL:4310WV



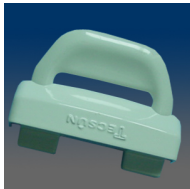
MODEL:9826NDX



MODEL:3206NDX



MODEL:3172HM



MODEL:12012

Automatic lock, surface mount



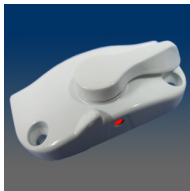
MODEL:12017

Automatic lock, surface mount, 2.062" C/L, .688" set back, match with 13017, 13025 and 13026



MODEL:12020

Automatic lock, surface mount, 2.401" C/L, .579" set back, match with 13020



MODEL:12029

Automatic lock, surface mount, 2.062" C/L, .688" set back, match with 13029. Zinc version and with same appearance as 12019



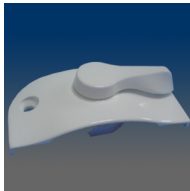
MODEL:605

Sash lock, surface mount, 1.875" C/L, .688" set back, #8 screw, hooded, FER compliant, 600 series, FER= Forced Entry Resistance



MODEL:606

Sash lock, surface mount, 1.875" C/L, .688" set back, #8 screw, non-hooded, FER compliant, 600 series, FER= Forced Entry Resistance



MODEL:610

Sash lock, surface mount, 2.062" C/L, .438" set back, #8 screw, hooded, FER compliant, 600 series, FER= Forced Entry Resistance



MODEL:611

Sash lock, surface mount, 2.062" C/L, .438" set back, #8 screw, non-hooded, FER compliant, 600 series, FER= Forced Entry Resistance



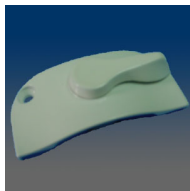
MODEL:611-1

Sash lock 611 with installed screw 10114 2pcs



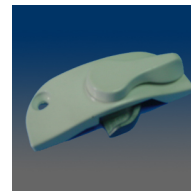
MODEL:611SL

Sash lock, surface mount, 2.062" C/L, .438" set back, #8 screw, non-hooded, FER compliant, with a open in housing back that can show lock or open position, 600 series, FER= Forced Entry Resistance



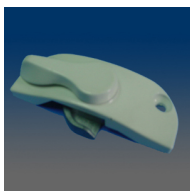
MODEL:620

Sash lock, surface mount, 2.062" C/L, .688" set back, #8 screw, hooded, FER compliant, 600 series, FER= Forced Entry Resistance



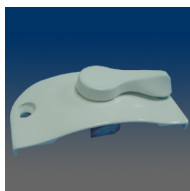
MODEL:621

Sash lock, surface mount, 2.062" C/L, .688" set back, #8 screw, non-hooded, FER compliant, 600 series, FER= Forced Entry Resistance



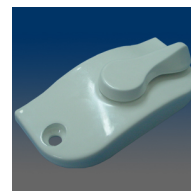
MODEL:621LH

Sash lock, surface mount, 2.062" C/L, .688" set back, #8 screw, non-hooded, FER compliant, 600 series, left handed of 621, FER= Forced Entry Resistance



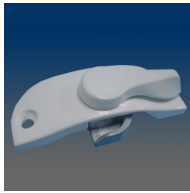
MODEL:680

Sash lock, surface mount, 2.25" C/L, .39" set back, #8 screw, hooded, FER compliant, 600 series, FER= Forced Entry Resistance



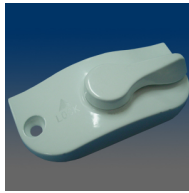
MODEL:680LH

Sash lock, left hand, surface mount, 2.25" C/L, .39" set back, #8 screw, hooded, FER compliant, 600 series, FER= Forced Entry Resistance



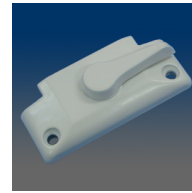
MODEL:681

Sash lock, surface mount, 2.25" C/L, .39" set back, #8 screw, non-hooded, FER compliant, 600 series, FER= Forced Entry Resistance



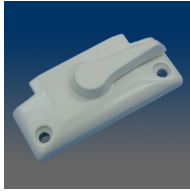
MODEL:683

Sash lock, surface mount, 2.25" C/L, .39" set back, #8 screw, short-hooded, FER compliant, 600 series, FER= Forced Entry Resistance



MODEL:690

Sash lock, surface mount, 2.25" C/L, .838" set back, #6 screw, FER= Forced Entry Resistance



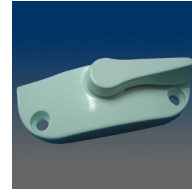
MODEL:690LH

Sash lock, left, surface mount, 2.25" C/L, .838" set back, #6 screw, FER= Forced Entry Resistance



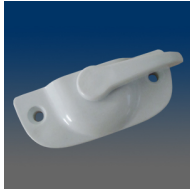
MODEL:3620

Sash lock, surface mount, 2.062" C/L, .688" set back, #8 screw, regular cam, match with 9337, same appearance as 620, hooded



MODEL:3621

Sash lock, surface mount, 2.062" C/L, .688" set back, #8 screw, regular cam, same appearance as 621, non hood, match with 8221, 8222, 8223, 8224



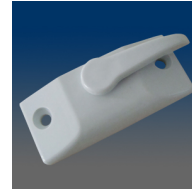
MODEL:4310

Composite sash lock, surface mount, round housing, 2.062" C/L, .438" set back, #6 screw



MODEL:4320

Composite sash lock, surface mount, round housing, 2.062" C/L, .688" set back, #6 screw



MODEL:4210

Composite sash lock, surface mount, square housing, 2.062" C/L, .438" set back, #6 screw



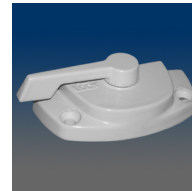
MODEL:4220

Composite sash lock, surface mount, square housing, 2.062" C/L, .688" set back, #6 screw



MODEL:3205

Sash lock, surface mount, 1.875" C/L, .688" setback, #6 screw, marked with LOCKED indicator



MODEL:3205LH

Sash lock, left, surface mount, 1.875" C/L, .688" setback, #6 screw, marked with LOCKED indicator



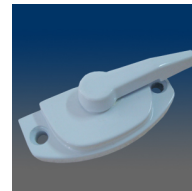
MODEL:3206

Sash lock, surface mount, 1.875" C/L, .688" setback, #6 screw, special cam design



MODEL:3206SK

Sash lock, surface mount, 1.875" C/L, .688" setback, #6 screw, step on housing



MODEL:3211

Sash lock, surface mount, 2.062" C/L, .438" setback, #8 screw, snap-back lock, unique spring design eliminates exposing the cam in the partially open position



MODEL:3212

Sash lock, surface mount, 2.062" C/L, .438" setback, #6 screw, marked with LOCKED indicator



MODEL:3212S

Sash lock, surface mount, 2.062" C/L, .438" setback, #6 screw, marked with LOCKED indicator, S cam



MODEL:3217

Sash lock, surface mount, 2.062" C/L, .438" setback, #6 screw, with engraved logo



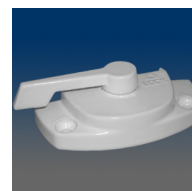
MODEL:3225

Sash lock, surface mount, 1.875" C/L, .688" setback, #6 screw, snap-back lock, unique spring design eliminates exposing the cam in the partially open position



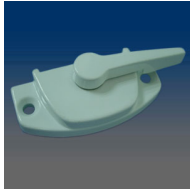
MODEL:3505

Sash lock, surface mount, 1.875" C/L, .688" setback, #6 screw, straight nib, marked with LOCKED indicator



MODEL:3505LH

Sash lock, surface mount, left, 1.875" C/L, .688" setback, #6 screw, 3 degree nib, marked with LOCKED indicator



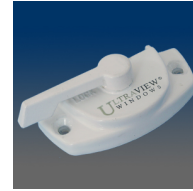
MODEL:3512

Sash lock, surface mount, 2.062" C/L, .438 setback, #6 screw, straight nib, marked with LOCKED indicator



MODEL:3512HV

Sash lock, surface mount, 2.062" C/L, .438 set back, #6 screw, straight nib, marked with LOCKED indicator, 3512 with pad logo "Home Visions"



MODEL:3512UVW

Sash lock, surface mount, 2.062" C/L, .438 set back, #6 screw, straight nib, marked with LOCKED indicator, 3512 with pad two-color logo "ULTRA-VIEW WINDOWS"



MODEL:3512SL

Sash lock, surface mount, 2.062" C/L, .438 setback, #6 screw, straight nib



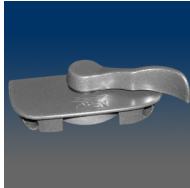
MODEL:3515TW

Sash lock, surface mount, 2.062" C/L, .438" setback, #6 screw, metal push button handle release like 9205, with logo of "TAYLORS WINDOW"



MODEL:9810

Sash lock, flush mount, 1.75" C/L front hole, #6 screw



MODEL:9811

Sash lock, flush mount, 1.73" C/L front hole, #8 screw



MODEL:9812

Sash lock, flush mount, 1.63" C/L, .63" setback, #8 screw, match with 8187 keeper



MODEL:9817

Sash lock, flush mount, 1.63" C/L, .39" setback, #8 screw, regular cam 9810-03



MODEL:9817S

Sash lock, flush mount, 1.63" C/L, .39" setback, #8 screw, with small cam



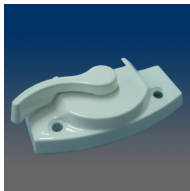
MODEL:9280

Sash lock, surface mount, 2.25" C/L, .438 set back, #6 screw, marked with LOCKED and UNLOCKED indicator



MODEL:3424

Sash lock, surface mount, 1.875" C/L, .688" setback, #6 screw, nesting nib



MODEL:3424LH

Sash lock, left, surface mount, 1.875" C/L, .688" setback, #6 screw, nesting nib



MODEL:9485

Sash lock, surface mount, 1.875" C/L, .688" set back, #6 screw, nesting nib



MODEL:9485LH

Sash lock, left, surface mount, 1.875" C/L, .688" set back, #6 screw, nesting nib



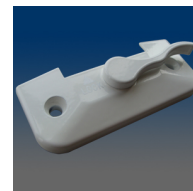
MODEL:9485SMT

Sash lock, logo, surface mount, 1.875" C/L, .688" set back, #6 screw, nesting nib



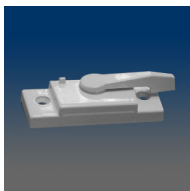
MODEL:9485SMT-LH

Sash lock, left, logo, surface mount, 1.875" C/L, .688" set back, #6 screw, nesting nib



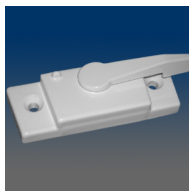
MODEL:9730

Sash lock, surface mount, 2.25" C/L, .39" set back, #6 screw, match with 9330



MODEL:3210B

Sash lock, surface mount, 2.062" C/L, .438" setback, .242" throw, #6 screw, flat handle design



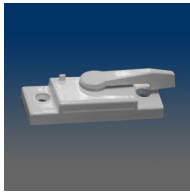
MODEL:3210S

Sash lock, surface mount, 2.062" C/L, .438" setback, .197" throw, #6 screw, flat handle design, small cam

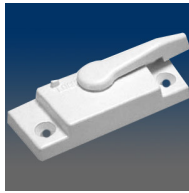


MODEL:3214

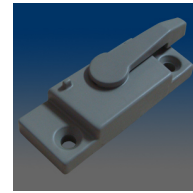
Sash lock, surface mount, 2" C/L, .465" setback, #8 screw, match with 8526 sash keeper

**MODEL:3218**

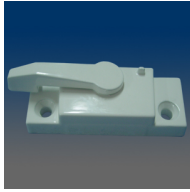
Sash lock, surface mount, 2.062" C/L, .438" setback, #6 screw, flat handle design, extended reach cam

**MODEL:3220**

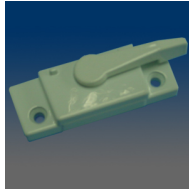
Sash lock, surface mount, 2.062" C/L, .688" setback, #6 screw

**MODEL:3221**

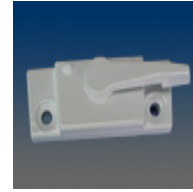
Sash lock, surface mount, 2.062" C/L, .688" setback, #6 screw, flat handle design

**MODEL:3221S**

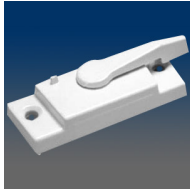
Sash lock, surface mount, 2.062" C/L, .688" setback, #6 screw, flat handle design, small cam of FS202

**MODEL:3228**

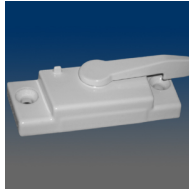
Sash lock, surface mount, 2.062" C/L, .688" setback, #6 screw, flat handle design, extended reach cam

**MODEL:3229**

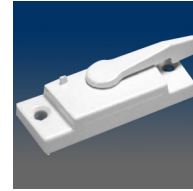
Sash lock, surface mount, 2.062" C/L, .688" setback, #8 screw

**MODEL:3280**

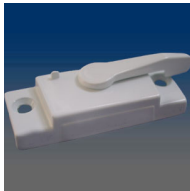
Sash lock, surface mount, 2.25" C/L, .39" setback, #10 screw

**MODEL:3280F**

Sash lock, surface mount, 2.25" C/L, .39" setback, #10 screw

**MODEL:3288**

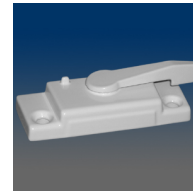
Sash lock, surface mount, 2.25" C/L, .39" setback, #8 screw, extended reach cam

**MODEL:3289**

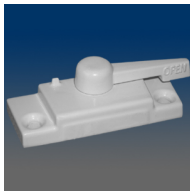
Sash lock, surface mount, 2.25" C/L, .39" setback, #8 screw, extended reach cam

**MODEL:3290**

Sash lock, surface mount, 2.157" C/L, .72" setback, #10 screw, easy-to-read engraved OPEN and LOCK labels

**MODEL:3291**

Sash lock, surface mount, 2.157" C/L, .72" setback, #10 screw

**MODEL:3298**

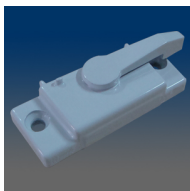
Sash lock, surface mount, 2.188" C/L, .73" setback, #12 screw

**MODEL:3299**

Sash lock, surface mount, 2.156" C/L, .72" setback, #8 screw. Operating instructions casted in embossed letters on handle, metal push button pin to release handle [previously 3300].

**MODEL:3320**

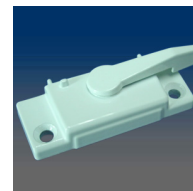
Sash lock, surface mount, 2.062" C/L, .688" setback, #6 screw

**MODEL:3380**

Sash lock, surface mount, 2.25" C/L, .39" setback, #8 screw, straight nib, flat handle design

**MODEL:3388**

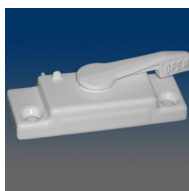
Sash lock, surface mount, 2.156" C/L, .719" setback, #8 screw. Operating instructions casted in embossed letters on handle, metal push button pin to release handle [previously 3300].

**MODEL:3390**

Sash lock, surface mount, 2.156" C/L, .72" setback, #10 screw, straight nib, flat handle design

**MODEL:3390GK**

Sash lock, surface mount, 2.156" C/L, .72" setback, #10 screw, straight nib, flat handle design, with engraved logo Gilkey on 3390

**MODEL:3391**

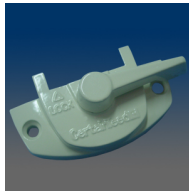
Sash lock, 2.156" C/L, .72" setback, #10 screw. Operating instructions casted in embossed letters on handle.

**MODEL:3398**

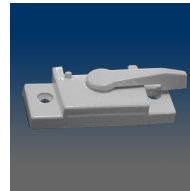
Sash lock, 2.156" C/L, .72" setback, #10 screw, straight nib, flat handle design, extended reach cam



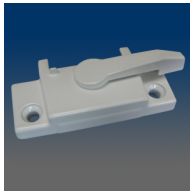
MODEL:3410
Sash lock, surface mount, 2.062" C/L, .438" setback, #6 screw, nesting nib, flat handle design



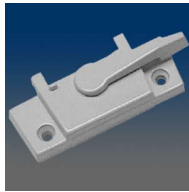
MODEL:3417
Sash lock, surface mount, 2.062" C/L, .438" setback, #6 screw, nesting nib, with engraved logo



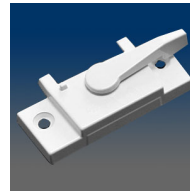
MODEL:3418
Sash lock, 2.062" C/L, .438" setback, #8 screw, nesting nib, flat handle design, extended reach cam



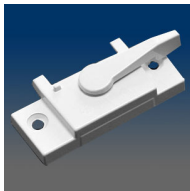
MODEL:3420
Sash lock, surface mount, 2.062" C/L, .688" setback, #6 screw, nesting nib, flat handle design



MODEL:3428
Sash lock, surface mount, 2.062" C/L, .688" setback, #8 screw, nesting nib, flat handle design, extended reach cam



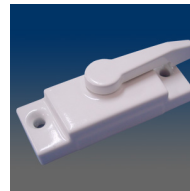
MODEL:3480
Sash lock, surface mount, 2.25" C/L, .396" setback, #8 screw, nesting nib, flat handle design



MODEL:3488
Sash lock, surface mount, 2.25" C/L, .39" setback, #8 screw, nesting nib, flat handle design, extended reach cam



MODEL:32801
Composite sash lock, 2.25" C/L, .39" setback, plastic housing, zinc cam, non-powder coated version



MODEL:32802
Composite sash lock, 2.25" C/L, .39" setback, plastic housing, zinc cam, powder coated version



MODEL:32981
Composite sash lock, 2.188" C/L, .73" setback, #12 screw, with glossy finish



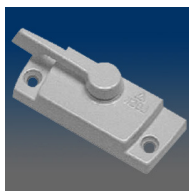
MODEL:32982
Composite sash lock, 2.188" C/L, .73" setback, #12 screw, with powdered coating



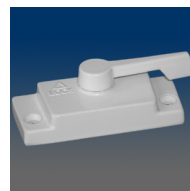
MODEL:3213
Sash lock, surface mount, 2.062" C/L, .438" setback, #6 screw, marked with LOCKED indicator



MODEL:3222
Sash lock, surface mount, 2.062" C/L, .688" setback, #6 screw



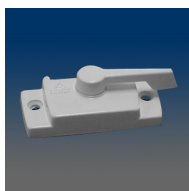
MODEL:3222LH
Sash lock, surface mount, 2.062" C/L, .688" setback, #6 screw, left cam



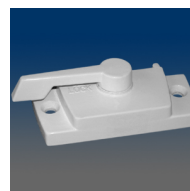
MODEL:3222S
Sash lock, surface mount, 2.062" C/L, .688" setback, #6 screw, small cam



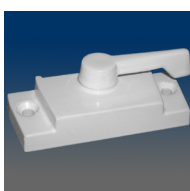
MODEL:3222SK
Sash lock, surface mount, 2.062" C/L, .688" setback, #6 screw, flat handle design



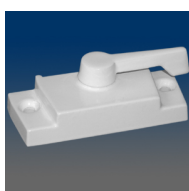
MODEL:3513
Sash lock, surface mount, 2.062" C/L, .438" setback, #6 screw, straight nib, marked with LOCKED indicator



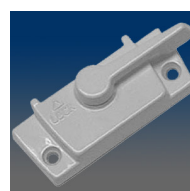
MODEL:3513LH
Sash lock, surface mount, left, 2.062" C/L, .438" setback, #6 screw, 3 degree nib, marked with LOCKED indicator



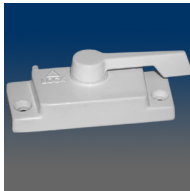
MODEL:3514
Sash lock, surface mount, 2.062" C/L, .438" setback, #8 screw



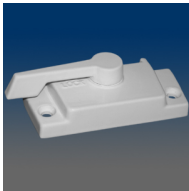
MODEL:3514S
Sash lock, surface mount, 2.062" C/L, .438" setback, #8 screw, small cam



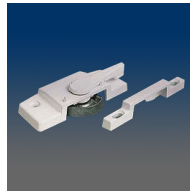
MODEL:3522
Sash lock, surface mount, 2.062" C/L, .688" setback, #6 screw, straight nib, marked with LOCKED indicator



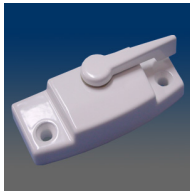
MODEL:3522S
Sash lock, surface mount, 2.062" C/L, .688" setback, #6 screw, 3 degree nib, marked with LOCKED indicator, with small cam



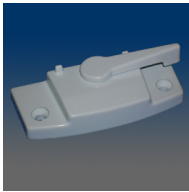
MODEL:3522S-LH
Sash lock, surface mount, left, 2.062" C/L, .688" setback, #6 screw, 3 degree nib, marked with LOCKED indicator, with small cam



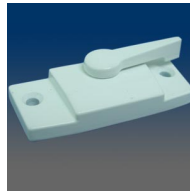
MODEL:3226
Sash lock, surface mount, 2.062" C/L, .688" setback, #6 screw, match with 8226 keeper



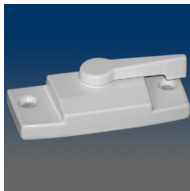
MODEL:3226SL
Sash lock, surface mount, 2.062" C/L, .688" setback, #6 screw



MODEL:3227
Sash lock, surface mount, 2.062" C/L, .688" setback, #6 screw



MODEL:3286
Sash lock, 2.25" C/L, .438" setback, #8 screw



MODEL:3287
Sash lock, 2.25" C/L, .438" setback, #8 screw, small cam, 3286 housing and handle



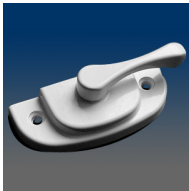
MODEL:3296
Sash lock, surface mount, 2.043" C/L, .688" setback, #8 screw



MODEL:32262
Composite sash lock, surface mount, 2.062" C/L, .688" setback, #6 screw, match with 82262 keeper



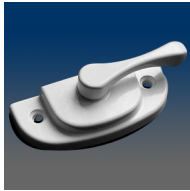
MODEL:32263
Composite Sash Lock, plastic version of 3226SL, 2.062" C/L, .688" setback, housing, handle and cam are made of plastic, match with 8226SL



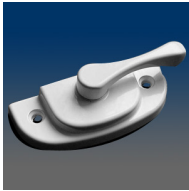
MODEL:9210
Sash lock, surface mount, 2.062" C/L, .438" setback, #6 screw, match with 9381 keeper



MODEL:9218
Sash lock, surface mount, 2.062" C/L, .438" setback, #6 screw, extended reach cam



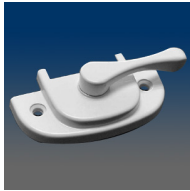
MODEL:9220
Sash lock, surface mount, 2.062" C/L, .688" set back, #8 screw, match with 9381 keeper



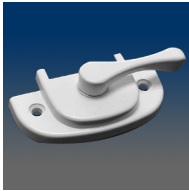
MODEL:9228
Sash lock, surface mount, 2.062" C/L, .688" set back, #6 screw, extended reach cam



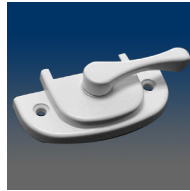
MODEL:9410
Sash lock, surface mount, 2.062" C/L, .438" set back, #6 screw, nesting nib



MODEL:9418
Sash lock, surface mount, 2.062" C/L, .438" set back, #6 screw, nesting nib, extended reach cam



MODEL:9420
Sash lock, surface mount, 2.062" C/L, .688" set back, #6 screw, nesting nib



MODEL:9428
Sash lock, surface mount, 2.062" C/L, .688" set back, #6 screw, nesting nib, extended reach cam



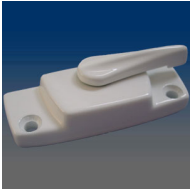
MODEL:9217
Sash lock, surface mount, 2.062" C/L, .438" set back, #8 screw



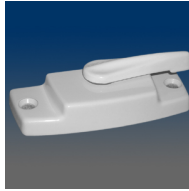
MODEL:9217LH
Sash lock, surface mount, left, 2.062" C/L, .438" set back, #8 screw



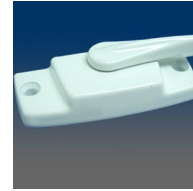
MODEL:9226
Sash lock, surface mount, 2.062" C/L, .688" set back, #8 screw, 9227's housing and 9286's cam



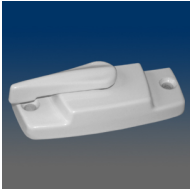
MODEL:9227
Sash lock, surface mount,
2.062" C/L, .688" set back, #8
screw



MODEL:9286
Sash lock, surface mount,
2.25" C/L, .438" set back, #6
screw, match with 9387 keeper



MODEL:9287
Sash lock, surface mount,
2.25" C/L, .39" set back, #6
screw, match with 9387 keeper



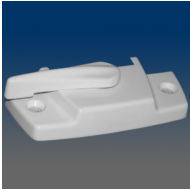
MODEL:9287LH
Sash lock, surface mount, left,
2.062" C/L, .39" set back, #6
screw, match with 9387 keeper



MODEL:9417
Sash lock, surface mount,
2.062" C/L, .438" set back, #6
screw, nesting rib, match with
9317 keeper



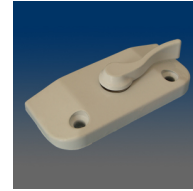
MODEL:9287
Sash lock, surface mount,
2.25" C/L, .39" set back, #6
screw, match with 9387 keeper



MODEL:9417LH
Sash lock, surface mount, left,
2.062" C/L, .438" set back, #6
screw, nesting rib



MODEL:9705
Sash lock, surface mount,
1.875" C/L, 1" set back, #6
screw, low profile, hooded



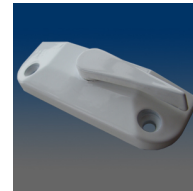
MODEL:9706
Sash lock, surface mount,
1.875" C/L, .688" set back,
hooded, low profile, match with
9319



MODEL:9710
Sash lock, surface mount,
2.062" C/L, .438" set back, #6
screw, low profile, hooded



MODEL:9720
Sash lock, surface mount,
2.062" C/L, .688" set back, #6
screw, low profile, hooded



MODEL:9721
Sash lock, surface mount,
2.062" C/L, .688" set back, #6
screw, low profile, non hooded,
straight handle, match with
9313



MODEL:9722
Sash lock, surface mount,
2.062" C/L, .688" set back, #6
screw, low profile, non hooded,
curved lever the same as 9706,
match with 9313



MODEL:9205R
Sash lock, surface mount,
1.88" C/L, .688" set back, #6
screw, half round housing



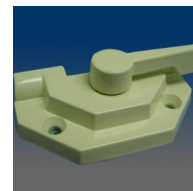
MODEL:9205R-PRO
Sash lock, surface mount,
1.88" C/L, .688" set back, #6
screw, half round housing, with
logo of "PROVIEW"



MODEL:9205RB
Sash lock, surface mount,
1.88" C/L, .688" set back, #6
screw, half round housing,
metal push button handle
release



MODEL:9205RB-REY
Sash lock, surface mount,
1.88" C/L, .688" set back, #6
screw, half round housing,
metal push button handle
release, with logo of
"REYNOLDS"



MODEL:9205S
Sash lock, 1.88" C/L, .688" set
back, square housing



MODEL:9205SB
Sash lock, surface mount,
1.88" C/L, .688" set back, #6
screw, square housing, metal
push button handle release



MODEL:9206R
Sash lock, surface mount, half
round housing



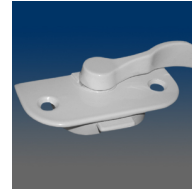
MODEL:9206SB
Sash lock, surface mount,
square housing, metal push
button handle release



MODEL:9820
Sash lock, flush mount, 1.68" C/L, .575" set back, #8 screw, different lever from 9821



MODEL:9821
Sash lock, flush mount, 1.68" C/L, .575" set back, #8 screw, recessed



MODEL:9821S
Sash lock, flush mount, 1.68" C/L, .575" set back, #8 screw, recessed, with small cam



MODEL:9822
Sash lock, flush mount, 1.68" C/L, .575" set back, #8 screw



MODEL:9823
Sash lock, flush mount, 1.68" C/L, .575" set back, #10 screw



MODEL:9824
Sash lock, face mount, 2.17" C/L, #8 screw



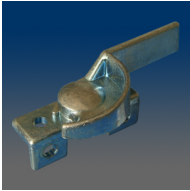
MODEL:9825
Sash lock, flush mount, 1.68" C/L, .575" set back, #6 screw, similar to 9821 but without the lip protruding portion of housing



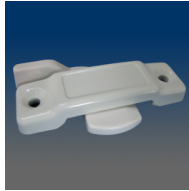
MODEL:9826
Sash lock, flush mount, 1.68" C/L, .575" set back, #8 screw, recessed, with straight handle, others are same as 9821



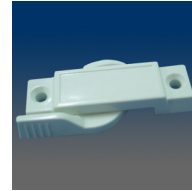
MODEL:9828
Sash lock, flush mount, 1.68" C/L, .575" set back, #8 screw, with beveled cam, others are same as 9820



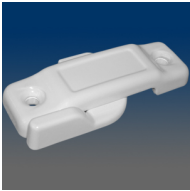
MODEL:3001
Small sash lock, .94" C/L, plated with white zinc



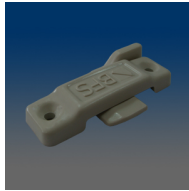
MODEL:31601
Composite sweep lock, 2.25" C/L, .33" throw, #8 screw, .43" setback, round housing, tongue without nibs, with glossy finish



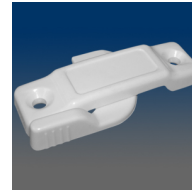
MODEL:31614
Composite sweep lock, 2.25" C/L, .35" throw, #6 screw, .43" setback, round housing, tongue with nibs, with glossy finish



MODEL:31621
Composite sweep lock, 2.25" C/L, .31" beveled throw, #6 screw, .43" setback, round housing, tongue without nibs, with glossy finish



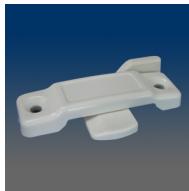
MODEL:31621BF
Composite sweep lock, 2.25" C/L, .31" beveled throw, #6 screw, .43" setback, round housing with "BFS" logo, tongue without nibs, with glossy finish



MODEL:31624
Composite sweep lock, 2.25" C/L, .31" beveled throw, #6 screw, .43" setback, round housing, tongue with nibs, with glossy finish



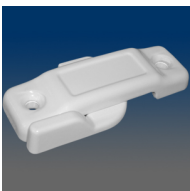
MODEL:31624BF
Composite sweep lock, 2.25" C/L, .31" beveled throw, #6 screw, .43" setback, round housing with "BFS" logo, tongue with nibs, with glossy finish



MODEL:31701
Composite sweep lock, 2.25" C/L, .46" throw, .43" setback, #8 screw, round housing, tongue without nibs, with glossy finish



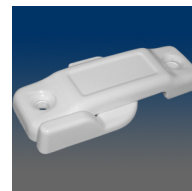
MODEL:31702
Composite sweep lock, 2.25" C/L, .50" throw, .39" setback, #8 screw, round housing, tongue without nibs, with powdered coating



MODEL:31721
Composite sweep lock, 2.25" C/L, .47" beveled throw, #8 screw, .39" setback, round housing, tongue without nibs, with glossy finish



MODEL:31722
Composite sweep lock, 2.25" C/L, .47" beveled throw, #8 screw, .39" setback, round housing, tongue without nibs, with powdered coating

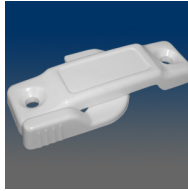


MODEL:31771
Composite sweep lock, 2.25" C/L, .53" throw, #10 screw, .39" setback, round housing, tongue without nibs, with glossy finish



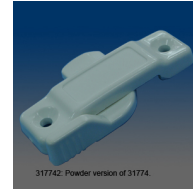
MODEL:31772

Composite sweep lock, 2.25" C/L, .53" throw, #10 screw, .39" setback, round housing, tongue without nibs, with powdered coating



MODEL:31774

Composite sweep lock, 2.25" C/L, .48" throw, #10 screw, .43" setback, round housing, tongue with nibs, with glossy finish



31774Z. Powder version of 31774

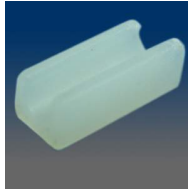
MODEL:31774Z

Composite sweep lock, 2.25" C/L, .48" throw, #10 screw, .43" setback, round housing, tongue with nibs, with powdered coating



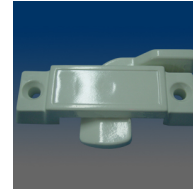
MODEL:1551

Sweep lock spacer, steel, yellow chromated



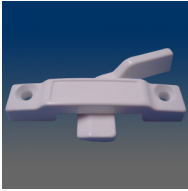
MODEL:3152

Spacer, for sweep lock, plastic



MODEL:31806

Composite sweep lock, 2.25" C/L, .41" throw, .43" setback, thicker squared housing, with glossy finish



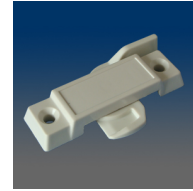
MODEL:31811

Composite sweep lock, 2.25" C/L, .39" throw, .37" setback, special narrow housing, with glossy finish



MODEL:31821

Composite sweep lock, 2.25" C/L, .47" throw, .43" setback, extended tongue, with glossy finish, round housing



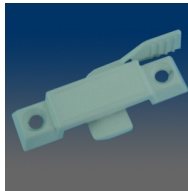
MODEL:31825

Composite sweep lock, 2.25" C/L, extended tongue, with glossy finish, square housing



MODEL:31831

Composite sweep lock, 2.25" C/L, .58" throw, #10 screw, .33" setback, round housing, tongue without nibs, with glossy finish



MODEL:3143

Sweep lock, 1.87" C/L, .28" throw, #8 screw, .31" setback



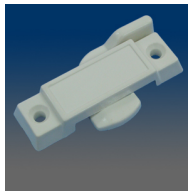
MODEL:3196

Sweep lock, 2.25" C/L, .49" throw, #8 screw, .40" setback



MODEL:3196LH

Sweep lock, left, 2.25" C/L, .49" throw, #8 screw, .40" setback



MODEL:31605

Composite sweep lock, 2.25" C/L, .33" throw, #8 screw, .43" setback, squared housing, tongue without nibs, with glossy finish



MODEL:31616

Composite sweep lock, 2.25" C/L, #6 screw, .35" throw, .43" setback, squared housing, tongue with nibs, with glossy finish



MODEL:31625

Composite sweep lock, 2.25" C/L, .31" beveled throw, #6 screw, .43" setback, squared housing, tongue without nibs, with glossy finish



MODEL:31626

Composite sweep lock, 2.25" C/L, .31" beveled throw, #6 screw, .43" setback, squared housing, tongue with nibs, with glossy finish



MODEL:31705

Composite sweep lock, 2.25" C/L, .50" throw, #8 screw, .39" setback, squared housing, tongue without nibs, with glossy finish



MODEL:31725

Composite sweep lock, 2.25" C/L, .47" beveled throw, #8 screw, .39" setback, squared housing, tongue without nibs, with glossy finish



MODEL:31775

Composite sweep lock, 2.25" C/L, .53" throw, #10 screw, .39" setback, squared housing, tongue without nibs, with glossy finish



31775Z. 31775 powdered version.

MODEL:31775Z

Composite sweep lock, 2.25" C/L, .53" throw, #10 screw, .39" setback, squared housing, tongue without nibs, with powdered coating



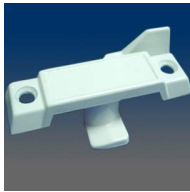
MODEL:31776
 Composite sweep lock, 2.25" C/L, .53" throw, #10 screw, .39" setback, squared housing, tongue with ribs, with glossy finish



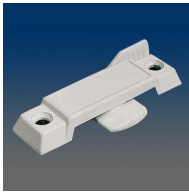
MODEL:3150
 Sweep lock, 2.25" C/L, .27" throw, #10 screw, .38" setback



MODEL:3151
 Sweep lock, 2.25" C/L, .27" throw, #8 screw, .39" setback



MODEL:3159
 Sweep lock, 2.25" C/L, .25" throw, #8 screw, .39" setback



MODEL:3160
 Sweep lock, 2.244" C/L, .38" throw, #8 screw, .39" setback



MODEL:3160LH
 Sweep lock, left, 2.244" C/L, .38" throw, #8 screw, .39" setback.



MODEL:3161
 Sweep lock, 2.25" C/L, .4" throw, #8 screw, .39" setback



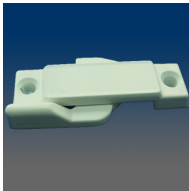
MODEL:3162
 Sweep lock, 2.25" C/L, .38" beveled throw, #6 screw, .39" setback



MODEL:3163
 Sweep lock, 2.25" C/L, .38" throw, #10 screw, .38" setback



MODEL:3163JD
 Sweep lock, 2.25" C/L, .38" throw, #10 screw, .38" setback, with molded logo "Jordan"



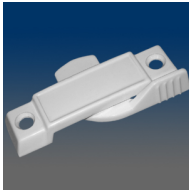
MODEL:3164
 Sweep lock, 2.244" C/L, .34" beveled throw, #8 screw, .39" setback



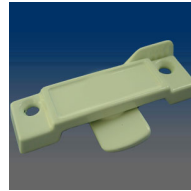
MODEL:3170
 Sweep lock, 2.244" C/L, .50" throw, #8 screw, .39" setback



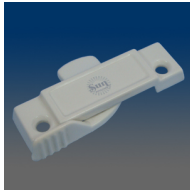
MODEL:3170GK
 Sweep lock, 2.244" C/L, .50" throw, #8 screw, .39" setback, with pad logo "GALKOS"



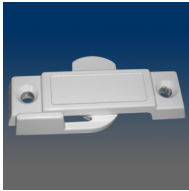
MODEL:3170LH
 Sweep lock, left, 2.244" C/L, .50" throw, #8 screw, .39" setback



MODEL:3174
 Sweep lock, 2.189" C/L, .48" throw, #8 screw, .39" setback



MODEL:3174SUN
 Sweep lock, 2.189" C/L, .48" throw, #8 screw, .39" setback, 3174 with marking "Sun"



MODEL:3175
 Sweep lock, 2.244" C/L, .50" throw, #8 screw, .39" setback



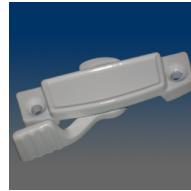
MODEL:3176
 Sweep lock, 2.25" C/L, .49" throw, #8 screw, .38" setback



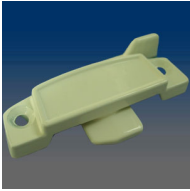
MODEL:3177
 Sweep lock, 2.25" C/L, .53" throw, #10 screw, .39" setback, without engraved logo



MODEL:3193
 Sweep lock, 2.25" C/L, .37" throw, #10 screw, .40" setback



MODEL:3194
 Sweep lock, 2.25" C/L, #6 screw, .39" setback, 3197 housing with 3161 handle



MODEL:3197

Sweep lock, 2.25" C/L, .37" throw, #6 screw, .38" setback



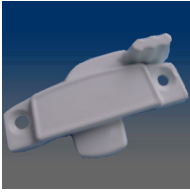
MODEL:3198

Sweep lock, 2.25" C/L, .35" throw, #6 screw, .39" setback



MODEL:3198TR

Sweep lock, 3198 with marking



MODEL:3199

Sweep lock, 2.25" C/L, .45" throw, #6 screw, .39" setback. Previously part #3200



MODEL:3172HM-EW

Sweep lock, 2.25" C/L, .47" beveled throw, #8 screw, .39" setback