

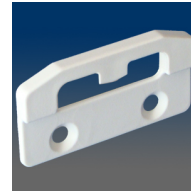
Keepers



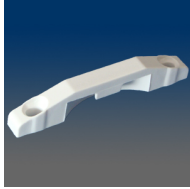
MODEL:8282



MODEL:9339



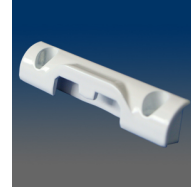
MODEL:4521



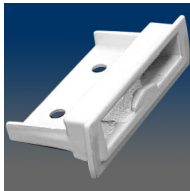
MODEL:4524



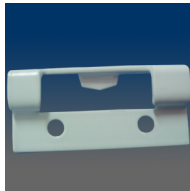
MODEL:8188



MODEL:9340

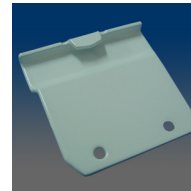


MODEL:9380



MODEL:8184

Keeper, face mount, .846" C/L, rounded holes, material SS304



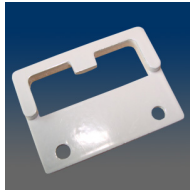
MODEL:8185

Keeper, face mount, .85" C/L, rounded holes, material SS304



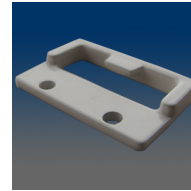
MODEL:8202

Keeper, sash, face mount, #6 screw, 1" C/L, material: zinc alloy



MODEL:8207

Keeper, sash, face mount, #6 screw, 1" C/L, taller than 8202, and has different hole position, material: zinc alloy



MODEL:8208

Keeper, sash, face mount, #6 screw, .744" C/L, keep bottom pair of holes of 8202, material: zinc alloy



MODEL:8209

Keeper, sash, face mount, #6 screw, .744" C/L, increase the thickness of 8208, material: zinc alloy



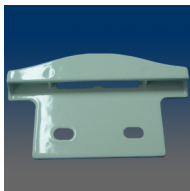
MODEL:8214

Keeper, sash, face mount, #8 screw, 1" C/L, material: zinc alloy



MODEL:8221

Keeper, sash, face mount, #6 screw, .744" C/L, match with 3621, material: zinc alloy



MODEL:8222

Keeper, sash, face mount, #6 screw, 1" C/L, match with 3621, material: zinc alloy



MODEL:8223

Keeper, sash, face mount, #6 screw, 1" C/L, match with 3621, material: zinc alloy



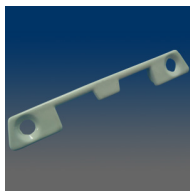
MODEL:8262

Keeper, sash, surface mount, #10 screw, 2.232" C/L, material: zinc alloy



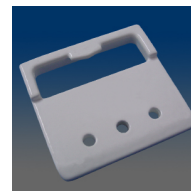
MODEL:8281

Keeper, sash, face mount, #6 screw, .75" C/L, material: zinc alloy



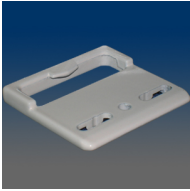
MODEL:8286

Keeper, sash, face mount, #8 screw, 2.25" C/L, material: zinc alloy

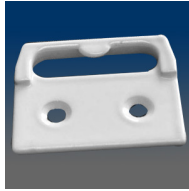


MODEL:8289

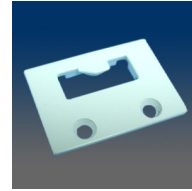
Keeper, sash, face mount, #5 screw, .77" C/L, material: zinc alloy



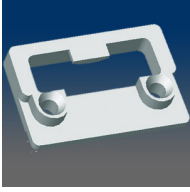
MODEL:8289B
Keeper, sash, face mount, .882\" C/L, material: zinc alloy



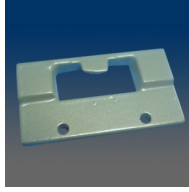
MODEL:8290
Keeper, sash, face mount, #4 screw, 1\" C/L, material: zinc alloy



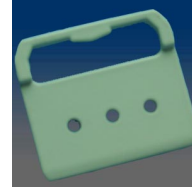
MODEL:8292
Keeper, sash, face mount, #8 screw, .866\" C/L, material: zinc alloy



MODEL:8293
Keeper, sash, face mount, #6 screw, 1\" C/L, material: zinc alloy



MODEL:8295
Keeper, sash, face mount, #4 screw, 1\" C/L, material: zinc alloy



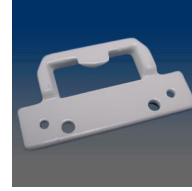
MODEL:8299
Keeper, sash, face mount, #5 screw, .77\" C/L, material: zinc alloy



MODEL:8421
Keeper, sash, face mount, #6 screw, 1\" C/L, material: zinc alloy



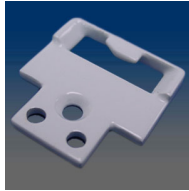
MODEL:8424
Keeper, sash, face mount, #5 screw, .433\" C/L, material: zinc alloy



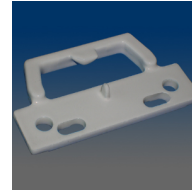
MODEL:8521
Keeper, sash, face mount, #6 screw, 1\" C/L, material: zinc alloy



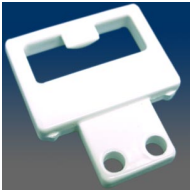
MODEL:8522
Keeper, sash, face mount, #10 screw, .88\" C/L, material: zinc alloy



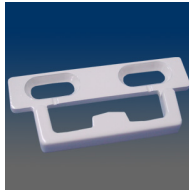
MODEL:8524
Keeper, sash, face mount, #10 screw, .43\" C/L, material: zinc alloy



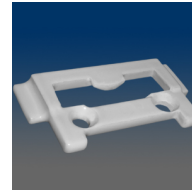
MODEL:8525
Keeper, sash, face mount, 1\" C/L, material: zinc alloy



MODEL:8526
Keeper, sash, face mount, #10 screw, .44\" C/L, material: zinc alloy



MODEL:8527
Keeper, sash, face mount, 1\" C/L, material: zinc alloy



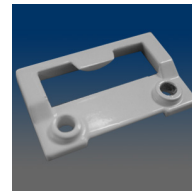
MODEL:8587
Keeper, sash, face mount, .866\" C/L, material: zinc alloy



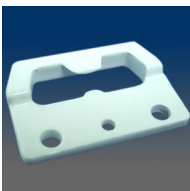
MODEL:9312
Keeper, sash, face mount, #6 screw, 1\" C/L, material: zinc alloy



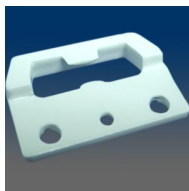
MODEL:9314
Keeper, sash, face mount, #6 screw, 1\" C/L, match with 9820 sash lock, material: zinc alloy



MODEL:9315
Keeper, sash, face mount, #6 screw, 1\" C/L, material: zinc alloy



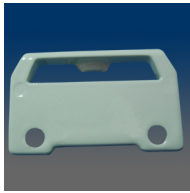
MODEL:9316
Keeper, sash, face mount, #8 screw, 1\" C/L, material: zinc alloy



MODEL:9317
Keeper, sash, face mount, #8 screw, 1\" C/L, material: zinc alloy

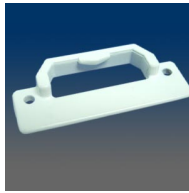


MODEL:9318
Keeper, sash, face mount, #6 screw, 1\" C/L, material: zinc alloy



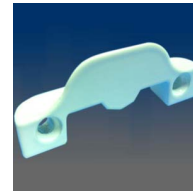
MODEL:9321

Keeper, sash, face mount, #6 screw, 1" C/L, material: zinc alloy



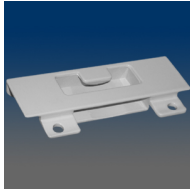
MODEL:9322

Keeper, sash, face mount, #5 screw, 1.87" C/L, material: zinc alloy



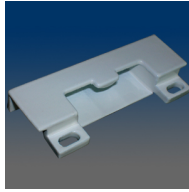
MODEL:9323

Keeper, sash, face mount, #6 screw, 1.65" C/L, open back, material: zinc alloy



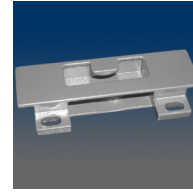
MODEL:9324A

Keeper, sash, face mount, #4 screw, 1.614" C/L, match with 9820 sash lock, without screw bosses, material: zinc alloy



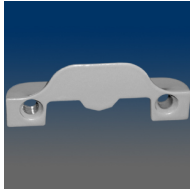
MODEL:9325

Keeper, sash, face mount, #5 screw, 1.681" C/L, material: zinc alloy



MODEL:9326

Keeper, sash, face mount, #5 screw, 1.556" C/L, material: zinc alloy



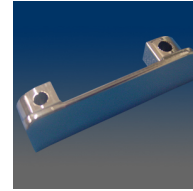
MODEL:9327

Keeper, sash, face mount, #8 screw, 1.655" C/L, material: zinc alloy



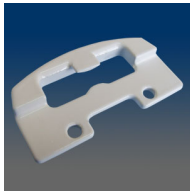
MODEL:9328

Keeper, sash, face mount, #5 screw, 1.598" C/L, material: zinc alloy



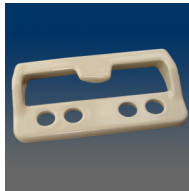
MODEL:9329

Keeper, sash, face mount, #6 screw, 1.65" C/L, material: zinc alloy



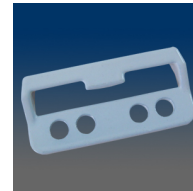
MODEL:9331

Keeper, sash, face mount, #8 screw, 1" C/L, match with 611, material: zinc alloy



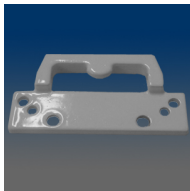
MODEL:9333

Keeper, sash, face mount, two sets of screw holes, match with 9227, material: zinc alloy



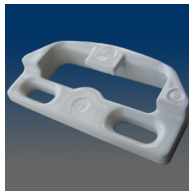
MODEL:9334

Keeper, sash, face mount, two sets of screw holes, match with 9730, material: zinc alloy



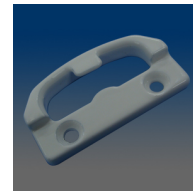
MODEL:9335

Keeper, sash, face mount, match with 9227, material: zinc alloy



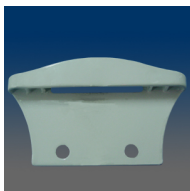
MODEL:9336

Keeper, sash, face mount, 1" C/L, slotted holes, match with 620, material: zinc alloy



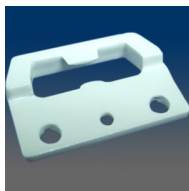
MODEL:9337

Keeper, sash, face mount, 1" C/L, similar with 9336, match with 3620, material: zinc alloy



MODEL:9354

Keeper, sash, face mount, for 600 series non-hooded lock, #8 screw, 1" C/L, material: zinc alloy



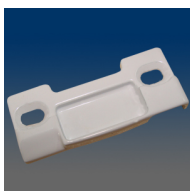
MODEL:9317

Keeper, sash, face mount, #8 screw, 1" C/L, material: zinc alloy



MODEL:13020

Keeper, matched with automatic lock 12020, face mount, 1.181" C/L



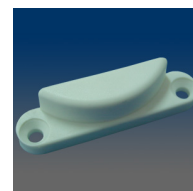
MODEL:13025

Keeper of automatic lock 12017, face mount, 1.339" C/L



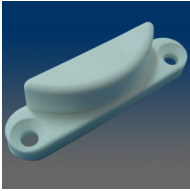
MODEL:1516

Hopper keeper, plastic, height .5" (cust PN 474-021-125, no need printed on carton)



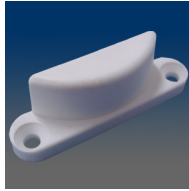
MODEL:1517

Hopper keeper, plastic, height .62" (474-021-250, no need printed on carton)



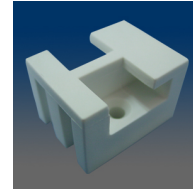
MODEL:1518

Hopper keeper, plastic, height .67" (474-021-062, no need printed on carton)



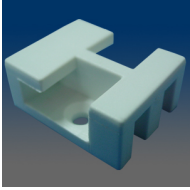
MODEL:1519

Hopper keeper, plastic, height .81" (474-021-667, no need printed on carton)



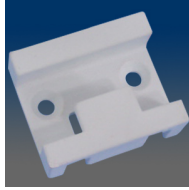
MODEL:28152

Keeper, plastic, match for 28151, 3/4"



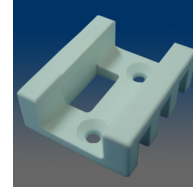
MODEL:28153

Keeper, plastic, match for 28151, 1/2"



MODEL:2817

Keeper, plastic, match for 2816, 1/2"



MODEL:28171

Keeper, plastic, no pin, 1/2"



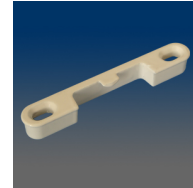
MODEL:8183

Keeper, sash, face mount, #6 screw, 2.062" C/L, slotted holes, match with 3161 lock, material: zinc alloy



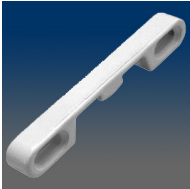
MODEL:8186

Keeper, sash, face mount, #6 screw, 2.062" C/L, with same appearance as 8183 but has round holes, material: zinc alloy



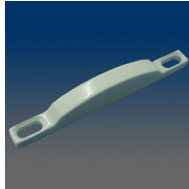
MODEL:8187

Keeper, face mount, 2.244" C/L, match with 9812, material: zinc alloy



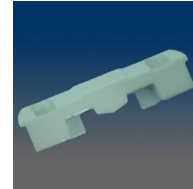
MODEL:8283

Keeper, sash, recessed, #6 screw, 2.062" C/L, material: zinc alloy



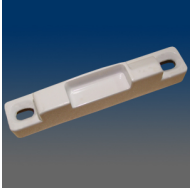
MODEL:9352

Keeper, sash, recessed surface mount, for 600 series hooded lock, 2.062" C/L, # 6 screw-base and #4 screw-head, material: zinc alloy



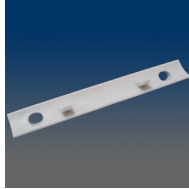
MODEL:9370

Keeper, sash, recessed surface mount, #6 screw, 1.625" C/L, material: zinc alloy



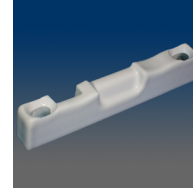
MODEL:13017

Keeper of automatic lock 12017, surface mount, 2.181" C/L



MODEL:1511

Keeper skirt, plastic, match with 9313



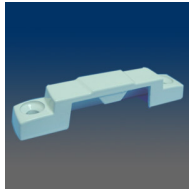
MODEL:13013

Keeper of automatic lock 12013, surface mount, 2.062" C/L, #6 screw



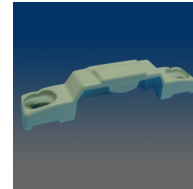
MODEL:13029

Keeper of automatic lock 12029, surface mount, 2.087" C/L, zinc version



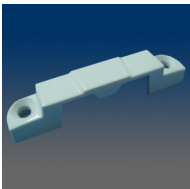
MODEL:8201

Keeper, sash, surface mount, #6 screw, 2.062" C/L, match with 3212 lock, closed back, material: zinc alloy



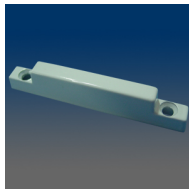
MODEL:8203

Keeper, sash, surface mount, #6 screw, 2.062" C/L, closed back, material: zinc alloy



MODEL:8206

Keeper, sash, surface mount, #6 screw, 2.062" C/L, closed back, similar to 8201, material: zinc alloy



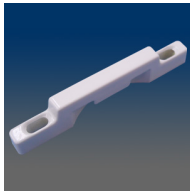
MODEL:8216

Keeper, sash, surface mount, #6 screw, 2.062" C/L, closed back, material: zinc alloy



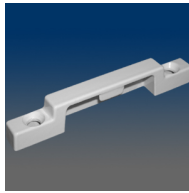
MODEL:8224

Keeper, sash, surface mount, #6 screw, 2.062" C/L, match with 3621



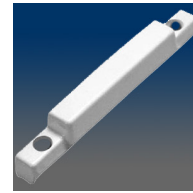
MODEL:82262

NYLON



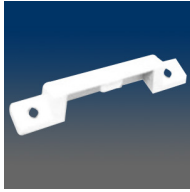
MODEL:8229

Keeper, sash, surface mount, 2.11" C/L, closed back, material: zinc alloy



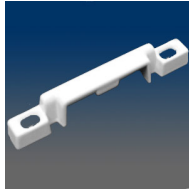
MODEL:8272

Keeper, sash, surface mount, #6 screw, 2.22" C/L, closed back, material: zinc alloy



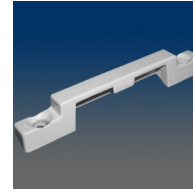
MODEL:8284

Keeper, sash, surface mount, #6 screw, 2.25" C/L, closed back, material: zinc alloy



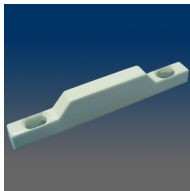
MODEL:8381

Keeper, sash, surface mount, #8 screw, 2.25" C/L, closed back, material: zinc alloy



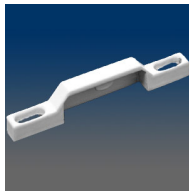
MODEL:8382

Keeper, sash, surface mount, #8 screw, 2.25" C/L, closed back, beveled bottom, material: zinc alloy



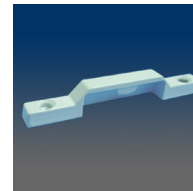
MODEL:8410

Keeper, sash, surface mount, #6 screw, 2.062" C/L, closed back, material: zinc alloy



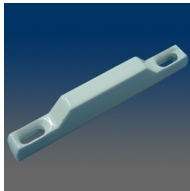
MODEL:8420

Keeper, sash, surface mount, #8 screw, 2.205" C/L, closed back, material: zinc alloy



MODEL:8423

Keeper, sash, surface mount, #8 screw, 2.25" C/L, closed back, material: zinc alloy



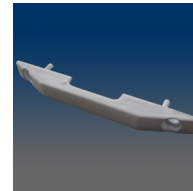
MODEL:8425

Keeper, sash, surface mount, #6 screw, 2.181" C/L, closed back, material: zinc alloy



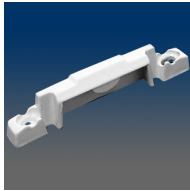
MODEL:8426

Keeper, sash, surface mount, #6 screw, 2.181" C/L, closed back, material: zinc alloy



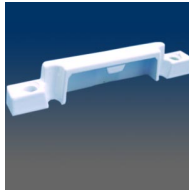
MODEL:8427

Keeper, sash, surface mount, #6 screw, 2.25" C/L, similar to 8288 with pegs at the bottom, closed back, match with 9722 sash lock, material: zinc alloy



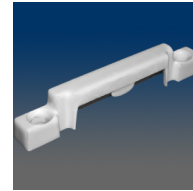
MODEL:8500

Keeper, sash, surface mount, #5 screw, 2.062" C/L, closed back, material: zinc alloy



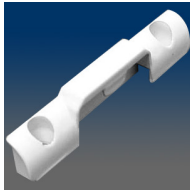
MODEL:8563

Keeper, sash, surface mount, 2.062" C/L, match with 3222S sash lock, material: zinc alloy



MODEL:8565

Keeper, sash, surface mount, #8 screw, 2.062" C/L, closed back, material: zinc alloy



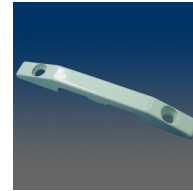
MODEL:9310

Keeper, sash, surface mount, #8 screw, 2" C/L, closed back, match with 9205 sash lock, material: zinc alloy



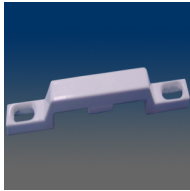
MODEL:9311

Keeper, sash, surface mount, #6 screw, 2.062" C/L, closed back, material: zinc alloy



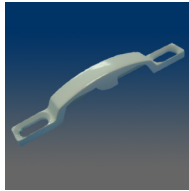
MODEL:9313

Keeper, sash, surface mount, #6 screw, 2.062" C/L, closed back, match with 9721 sash lock, material: zinc alloy



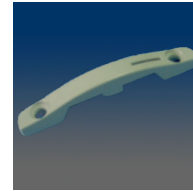
MODEL:9330

Keeper, sash, surface mount, #6 screw, 2.25" C/L, closed back, match with 9730, material: zinc alloy



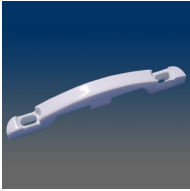
MODEL:9350

Keeper, sash, recessed surface mount, for 600 series hooded lock, #8 screw, 2.079" C/L, material: zinc alloy

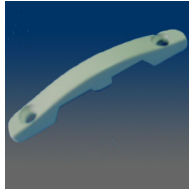


MODEL:9351

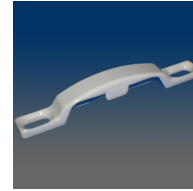
Keeper, sash, surface mount, "seasure", for 600 series non-hooded lock, #8 screw, 2.062" C/L, material: zinc alloy and Mn



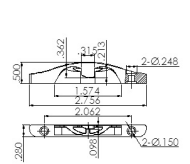
MODEL:9356
Keeper, sash, surface mount, for non-hooded 600 series hooded lock, #6 screw, 2.062" C/L, closed back, material: zinc alloy



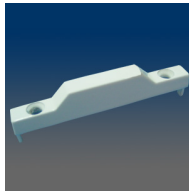
MODEL:9357
Keeper, sash, surface mount, for 600 series lock, #6 screw, 2.062" C/L, closed back, material: zinc alloy



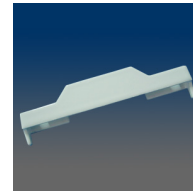
MODEL:9358
Keeper, sash, surface mount, for 600 series hooded lock, #6 screw, 2.029" C/L, closed back, material: zinc alloy



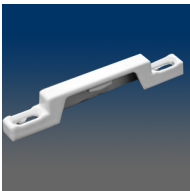
MODEL:9360
Keeper, sash, surface mount, based on 9353, but with closed back and round holes, 2.062" C/L, material: zinc alloy



MODEL:9371
Keeper, sash, surface mount, #6 screw, 2.062" C/L, closed back, material: zinc alloy



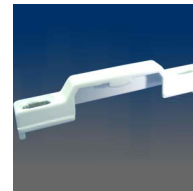
MODEL:9372
Keeper, sash, surface mount, #6 screw, 2.25" C/L, closed back, material: zinc alloy



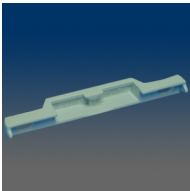
MODEL:9381
Keeper, sash, surface mount, #6 screw, 2.25" C/L, closed back, material: zinc alloy, match with 9210 and 9220 locks



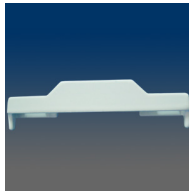
MODEL:9382
Keeper, sash, surface mount, #6 screw, 2.25" C/L, closed back, material: zinc alloy, match with 9280 lock



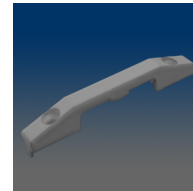
MODEL:9383
Keeper, sash, surface mount, #5 screw, 2.22" C/L, closed back, material: zinc alloy, pronged



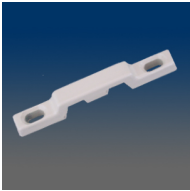
MODEL:9384
Keeper, sash, surface mount, #6 screw, 2.25" C/L, closed back, material: zinc alloy, pronged



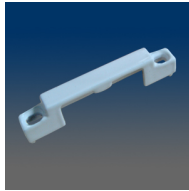
MODEL:9385
Keeper, sash, surface mount, #5 screw, 2.126" C/L, closed back, material: zinc alloy, pronged



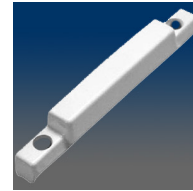
MODEL:9386
Keeper, sash, surface mount, #6 screw, 2.062" C/L, closed back, pronged, material: zinc alloy, match with 9721 lock



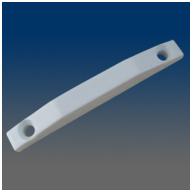
MODEL:9388
Keeper, sash, surface mount, #6 screw, 2.062" C/L, closed back, material: zinc alloy



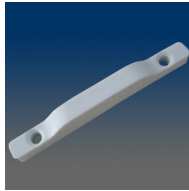
MODEL:9392
Keeper, sash, surface mount, 2.126" C/L, closed back, material: zinc alloy, match with 3205 lock



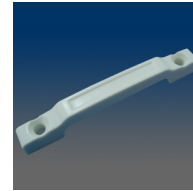
MODEL:8272
Keeper, sash, surface mount, #6 screw, 2.22" C/L, closed back, material: zinc alloy



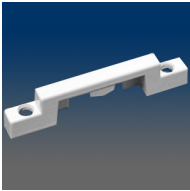
MODEL:4520
Composite keeper, 2.062" C/L, rounded holes, surface mount, match with 4210, 4220 locks



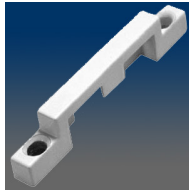
MODEL:4530
Composite keeper, 2.062" C/L, rounded holes, surface mount, match with 4310, 4320 locks



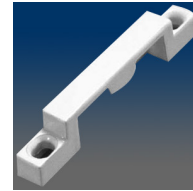
MODEL:81811
Composite sash keeper, surface mount, 2.25" C/L, rounded holes, match with 31811 lock



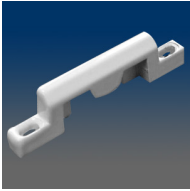
MODEL:8205
Keeper, sash, surface mount, #6 screw, 2.062" C/L, open back, material: zinc alloy



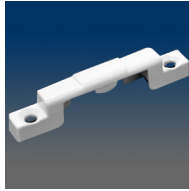
MODEL:8211
Keeper, sash, surface mount, #6 screw, 2.062" C/L, open back, material: zinc alloy



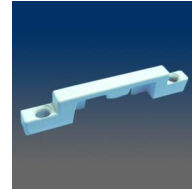
MODEL:8212
Keeper, sash, surface mount, #8 screw, 2.062" C/L, open back, material: zinc alloy



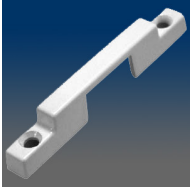
MODEL:8213
Keeper, sash, surface mount,
#5 screw, 2.062" C/L, open
back, material: zinc alloy



MODEL:8217
Keeper, sash, surface mount,
#6 screw, 2.062" C/L, open
back, material: zinc alloy



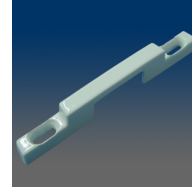
MODEL:8219
Keeper, sash, surface mount,
#6 screw, 2.062" C/L, open
back, material: zinc alloy



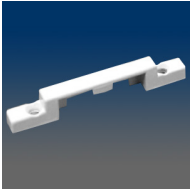
MODEL:8220
Keeper, sash, surface mount,
#8 screw, 2.188" C/L, open
back, material: zinc alloy



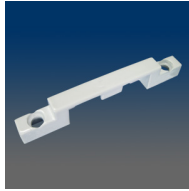
MODEL:8226
Keeper, sash, surface mount,
#6 screw, 2.175" C/L, open
back, match with 3226 / 3286 /
3296 locks, material: zinc alloy



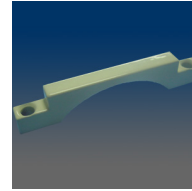
MODEL:8226SL
Keeper, sash, surface mount,
2.138" C/L, open back,
material: zinc alloy



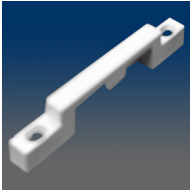
MODEL:8227
Keeper, sash, surface mount,
#6 screw, 2.062" C/L, open
back, material: zinc alloy



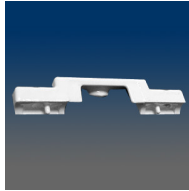
MODEL:8280
Keeper, sash, surface mount,
#6 screw, 2.25" C/L, open
back, material: zinc alloy



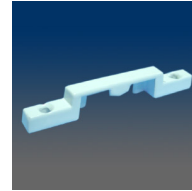
MODEL:8285
Keeper, sash, surface mount,
#6 screw, 2.25" C/L, open
back, material: zinc alloy



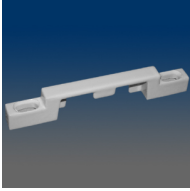
MODEL:8287
Keeper, sash, surface mount,
#6 screw, 2.25" C/L, open
back, material: zinc alloy



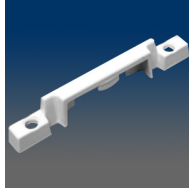
MODEL:8288
Keeper, sash, surface mount,
#6 screw, 2.25" C/L, with pegs
at the bottom, open back,
material: zinc alloy



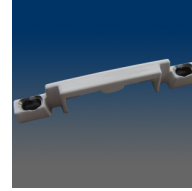
MODEL:8291
Keeper, sash, surface mount,
#5 screw, 2.22" C/L, open
back, material: zinc alloy



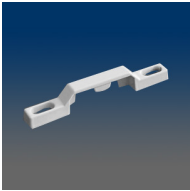
MODEL:8296
Keeper, sash, surface mount,
#6 screw, 2.25" C/L, open
back, material: zinc alloy



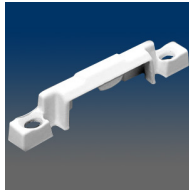
MODEL:8380
Keeper, sash, surface mount,
#6 screw, 2.25" C/L, open
back, material: zinc alloy



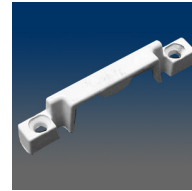
MODEL:8384
Keeper, sash, surface mount,
#6 screw, elongated screw hole
based on 8380, open back,
match with 3390GK, material:
zinc alloy



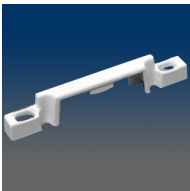
MODEL:8422
Keeper, sash, surface mount,
#6 screw, 2.22" C/L, open
back, material: zinc alloy



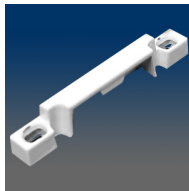
MODEL:8503
Keeper, sash, surface mount,
#6 screw, 2.062" C/L, open
back, material: zinc alloy



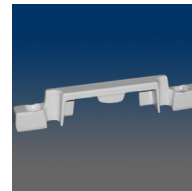
MODEL:8504
Keeper, sash, surface mount,
#6 screw, 2.062" C/L, open
back, material: zinc alloy



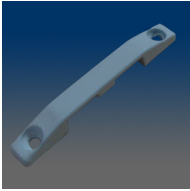
MODEL:8561
Keeper, sash, surface mount,
2.062" C/L, open back,
material: zinc alloy



MODEL:8562
Keeper, sash, surface mount,
#6 screw, 2.062" C/L, open
back, material: zinc alloy

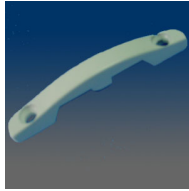


MODEL:8564
Keeper, sash, surface mount,
#6 screw, 2.062" C/L, open
back, material: zinc alloy



MODEL:9319

Keeper, sash, surface mount, 2.062" C/L, open back, match with 9706 sash lock, material: zinc alloy



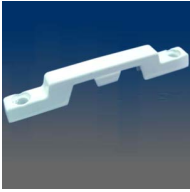
MODEL:9353

Keeper, sash, surface mount, for 600 series non-hooded lock, #6 screw, 2.126" C/L, open back, material: zinc alloy



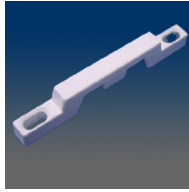
MODEL:9359

Keeper, sash, surface mount, #6 screw, 2.126" C/L, open back, material: zinc alloy, match with both 611SL (non-hooded) and the old sash lock of the customer #364



MODEL:9387

Keeper, sash, surface mount, #6 screw, 2.25" C/L, open back, material: zinc alloy



MODEL:9389

Keeper, sash, surface mount, #6 screw, 2.25" C/L, open back, material: zinc alloy