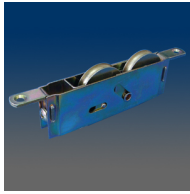
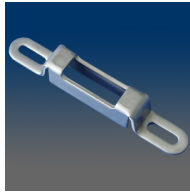


Patio Door



MODEL:PR610D



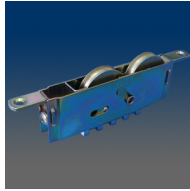
MODEL:PM431SS



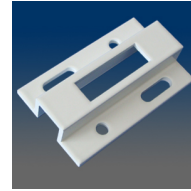
MODEL:PR100B



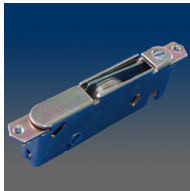
MODEL:PD1430



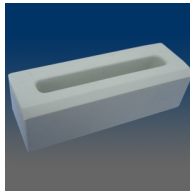
MODEL:PR615D



MODEL:PM472

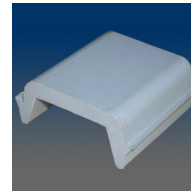


MODEL:PM590A



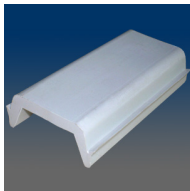
MODEL:PB011

Bumper, rubber, molded rectangular per NorSta, 3.5" long



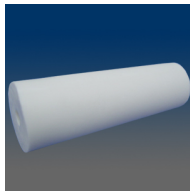
MODEL:PB001

Bumper, rubber, 2" channel



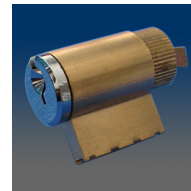
MODEL:PB002

Bumper, rubber, 4" channel



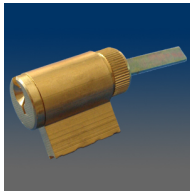
MODEL:PB020

Bumper, rubber, 2.63" high



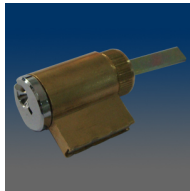
MODEL:PC001E

Keyset, differently keyed, bright chromed cylinder head, total length without finished head is 1.4646", used for PD1320



MODEL:PC002C

Keyset, differently keyed, brass cylinder head, total length without finished head is 2.2795", used for PD2000



MODEL:PC011B

Keyset, similarly keyed, bright chromed cylinder head, total length without finished head is 2.1172", used for PD2000



MODEL:PC011C

Keyset, similarly keyed, bright chromed cylinder head, total length without finished head is 2.2795", used for PD2000



MODEL:PD4000

Handle set, patio door, zinc handles combination of exterior PD1103 and interior PD4020



MODEL:PD1620

Handle set, patio door, for US western market, interior zinc loop handle, locked in middle location, without cylinder and without lever



MODEL:PD2020

Legacy handle set, patio door, zinc C loop handles without keyed lock and lever



MODEL:PD3020

Olympus handle set, patio door, zinc loop handles, without keyed lock and lever



MODEL:PD1120

Handle set, patio door, interior zinc loop and exterior wing handles with keyed lock

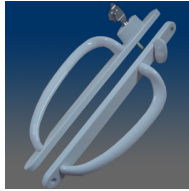


MODEL:PD1420

Handle set, patio door, exterior zinc wing and interior zinc loop handles with lock



MODEL:PD1600
 Handle set, patio door, for US western market, zinc loop handles, locked in middle location, with cylinder and lever



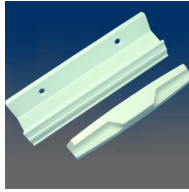
MODEL:PD1700
 Handle set, patio door, for US western market, zinc loop handles, locked in upper location, with cylinder and lever



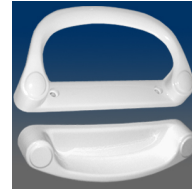
MODEL:PD2000
 Legacy handle set, patio door, zinc C loop handles with keyed lock and lever



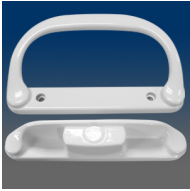
MODEL:PD3000
 Olympus handle set, patio door, zinc loop handles with keyed lock and lever



MODEL:PD1300
 Handle set, patio door, molded plastic exterior wing, and extruded aluminum interior handle without lock



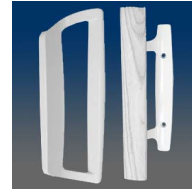
MODEL:PD1510
 Handle set, patio door, aluminum, exterior wing and interior D loop handles with keyless lock



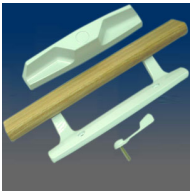
MODEL:PD1520
 Handle set, patio door, aluminum, exterior wing and interior D loop handles



MODEL:PD1530
 Handle set, patio door, aluminum, exterior wing and interior loop handles



MODEL:PD1000
 Handle set, patio door, wood bar and zinc loop handles with keyless lock



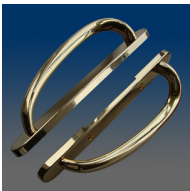
MODEL:PD1100
 Handle set, patio door, interior wood bar and exterior zinc wing handles with keyless lock



MODEL:PD1400
 Handle set, patio door, exterior zinc wing and interior zinc loop handles with keyless lock



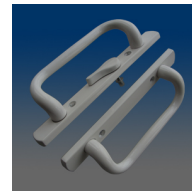
MODEL:PD1500
 Handle set, patio door, zinc D loop handles with keyless lock



MODEL:PD1610
 Handle set, patio door, for US western market, exterior, zinc loop handle, locked in middle location, with lever only



MODEL:PD2010
 Legacy handle set, patio door, zinc C loop handles with keyless lock and lever



MODEL:PD2110
 Handle set, patio door, zinc C loop handle with keyless lock and lever, others are same as PD2010



MODEL:PD3010
 Olympus handle set, patio door, zinc loop handles, keyless lock and lever



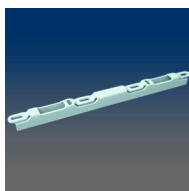
MODEL:PM461
 Keeper, aluminum, extruded, .8" high, for double point mortise



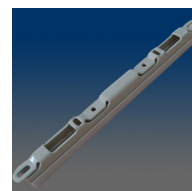
MODEL:PM462
 Keeper, aluminum, extruded, .55" high, for double point mortise



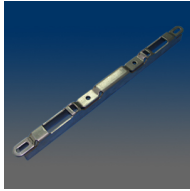
MODEL:PM463
 Keeper, aluminum, extruded, .675" high, for double point mortise, included in PD1530-006



MODEL:PM530
 Keeper, adjusted slot holes, .75" high, yellow dichromate or powdered coating, for PM523, PM524, PM525 and PM526

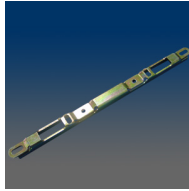


MODEL:PM530A
 Keeper, PM530A with 2pcs H spacers PM532 attached, for PM523, PM524, PM525 and PM526



MODEL:PM530SS

Keeper, adjusted slot holes, .75" high, stainless steel



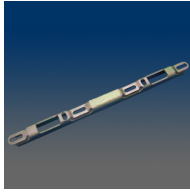
MODEL:PM533

Keeper, .50" high, yellow zinc or powdered coating, for PM523, PM524, PM525 and PM526



MODEL:PM534

Keeper, .60" high, yellow zinc or powdered coating, similar to PM530, for PM523, PM524, PM525 and PM526



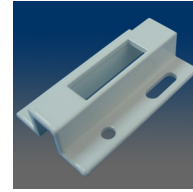
MODEL:PM535

Keeper, adjusted slot holes, .575" high, yellow zinc or powdered coating, similar to PM533, for PM523, PM524, PM525 and PM526



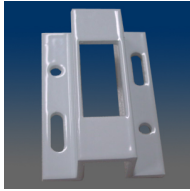
MODEL:PM550

Keeper, zinc die-cast, .63" high, with plastic bumper attached, for PM540



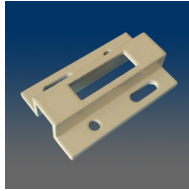
MODEL:PM460

Keeper, aluminum, .6" high, for single point mortise



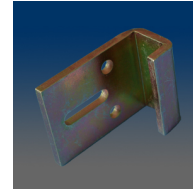
MODEL:PM471

Keeper, aluminum, .68" high, for single point mortise



MODEL:PM473

Keeper, aluminum, .55" height, 2" length based on PM462 extrusion, for single point mortise, included in PD1530-008, with 4 x #10045 screws



MODEL:PM420

Keeper, yellow dichromate, formed, steel, .75" mounting hole C/L



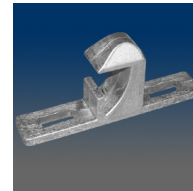
MODEL:PM430

Keeper, yellow dichromate, steel, formed mounting slots, .461" high



MODEL:PM440

Keeper, yellow dichromate, steel, .118" high



MODEL:PM200

Keeper, mill zinc hook



MODEL:PM400

Keeper, zinc, yellow dichromate, .685" high



MODEL:PM400B

Keeper, zinc, white zinc plated, .685" high, same as PM400 except of finish



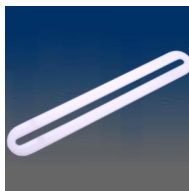
MODEL:PM410

Keeper, zinc yellow dichromate, .44" high



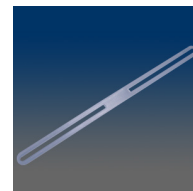
MODEL:PM450

Keeper, zinc, .5" high



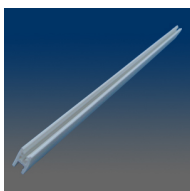
MODEL:PM411

Spacer, PE, for PM410 keeper, .09" thick



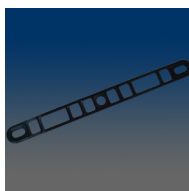
MODEL:PM531

Spacer, PE, for PM530 keeper, .079" thick



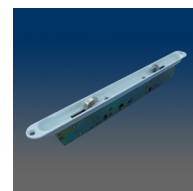
MODEL:PM532

Spacer, PVC, "H" shape, for PM530 keeper



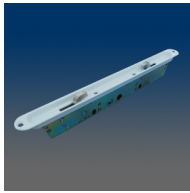
MODEL:PM551

Spacer, HDPE, for PM550



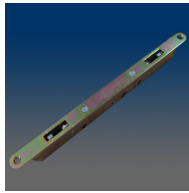
MODEL:PM523C

Mortise, double point, yellow dichromate, with zinc shallow pocket, 11.945" hole space, middle hole



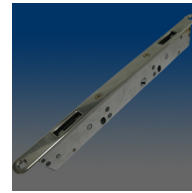
MODEL:PM524C

Mortise, double point, yellow dichromate, with zinc shallow pocket, 11.945" hole space, side hole



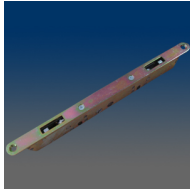
MODEL:PM523A

Mortise, double point, yellow dichromate, with long top plate, 10.992" hole space, middle hole



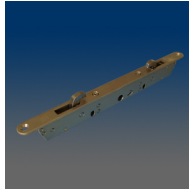
MODEL:PM523A-SS

Mortise, double point, stainless steel, with long top plate, 10.992" hole space, middle hole, middle hole



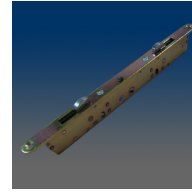
MODEL:PM524A

Mortise, double point, yellow dichromate, with long top plate, 10.992" hole space, side hole



MODEL:PM524A-SS

Mortise, double point, stainless steel, with long top plate, 10.992" hole space, side hole



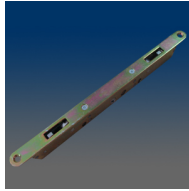
MODEL:PM525A

PM523/ PM524 configuration, adding PM540's anti-slam, with "A" plate, used on low profile, middle hole



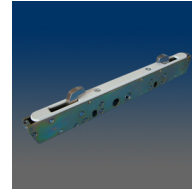
MODEL:PM540

Mortise, double point, narrow width, square notch, matching with PD1120 lever pin



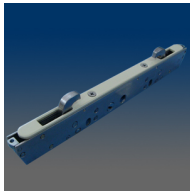
MODEL:PM523

Mortise, double point, yellow dichromate, middle hole, without face plate



MODEL:PM523D

Mortise, double point, yellow dichromate, with short top plate, 9.87" hole space, middle hole



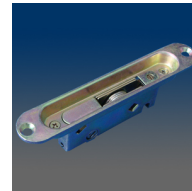
MODEL:PM524D

Mortise, double point, yellow dichromate, with short top plate, 9.87" hole space, side hole



MODEL:PM500C

Mortise, single point, yellow dichromate, with zinc pocket PM501 attached, 5.244" hole space



MODEL:PM510C

Mortise, single point, yellow dichromate, with zinc pocket PM501 attached, 5.244" hole space, pin slot .9" from face plate



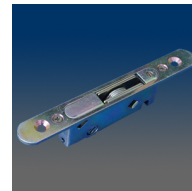
MODEL:PM500

Mortise, single point, yellow dichromate, with short top plate PM503 attached, 4.65" hole space



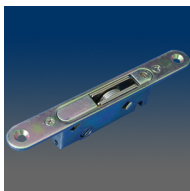
MODEL:PM500B

Mortise, single point, yellow dichromate, with long top plate PM502 attached, 5.374" hole space



MODEL:PM510

Mortise, single point, yellow dichromate, with short top plate PM503 attached, 4.65" hole space, pin slot .9" from face plate



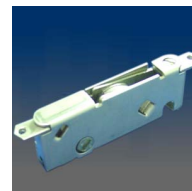
MODEL:PM510B

Mortise, single point, yellow dichromate, with long top plate PM502 attached, 5.374" hole space, pin slot .9" from face plate



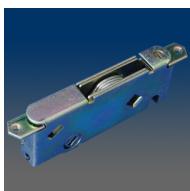
MODEL:PM500A

Mortise, single point, yellow dichromate, without face plate, 3.681" hole space, #6-32 installation screw should be ordered separately



MODEL:PM500A-SS

Mortise, single point, stainless steel, without face plate, 2 x #10008 screws should be ordered separately



MODEL:PM510A

Mortise, single point, yellow dichromate, without face plate, 3.681" hole space, #6-32 installation screw should be ordered separately, pin slot .90" from face plate



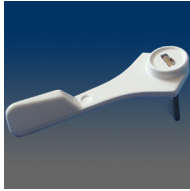
MODEL:PB101

Lock, flush, patio door, with rod PB101



MODEL:PD1005

Keeper, zinc die-casting, powder coated, cast mounting slots, .66" high



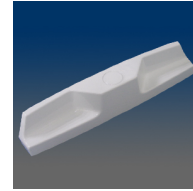
MODEL:PD1006

Snib, mortise, 0.735", for PD1000SL



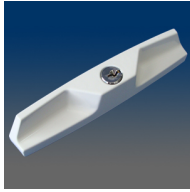
MODEL:PD1008

Snib, mortise, 0.735", for PD1510



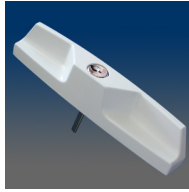
MODEL:PD1101-1

Handle, exterior, PD1101, keyless, #8-32 thread in six holes on the cylinder centerline and two cylinder post holes



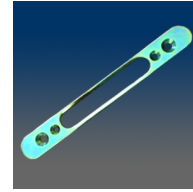
MODEL:PD1102-1

Handle, exterior, used with key cylinder, #8-32 thread in six holes on the cylinder centerline and two cylinder post holes



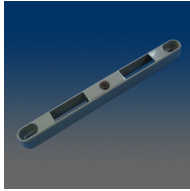
MODEL:PD1102-11B

Handle, exterior, PD1102EW-1 with cylinder PC001B attached



MODEL:PM503

Steel short plate of PM500, 4.65" hole space, yellow dichromate



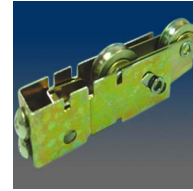
MODEL:PM550A

PM550 keeper + PM551 spacer



MODEL:PR2001

Roller bracket, patio door, plastic, match with 1.25" tandem wheel, used on an AAMA AW rating door with a load 200lbs



MODEL:PR602A

Tandem roller, patio door, end-adjustable, yellow dichromate, 1" wheel diameter



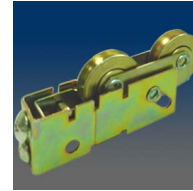
MODEL:PR602B

Tandem roller, patio door, end-adjustable, yellow dichromate, 1.125" wheel diameter, improved wheel groove



MODEL:PR602B-SS

Tandem roller, patio door, end-adjustable, stainless steel, 1.125" wheel diameter



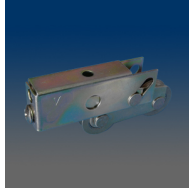
MODEL:PR602C

Tandem roller, patio door, end-adjustable, yellow dichromate, 1.25" wheel diameter



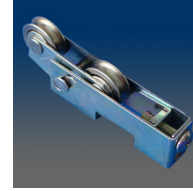
MODEL:PR602D

Tandem roller, patio door, end-adjustable, yellow dichromate, 1.5" wheel diameter



MODEL:PR603A

Tandem roller, patio door, end-adjustable, yellow dichromate, 1" wheel diameter, .69" housing width



MODEL:PR604A

Tandem roller, patio door, end-adjustable, yellow dichromate, 1" wheel diameter, side mount only, .69" housing width



MODEL:PR604B

Tandem roller, patio door, end-adjustable, yellow dichromate, 1.25" wheel diameter, side mount only, .69" housing width



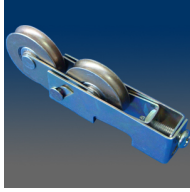
MODEL:PR604C

Tandem roller, patio door, end-adjustable, yellow dichromate, 1.25" wheel diameter, .69" housing width



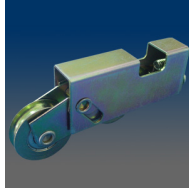
MODEL:PR604C-SS

Tandem roller, patio door, end-adjustable, stainless steel, 1.25" wheel diameter, .69" housing width



MODEL:PR604D

Tandem roller, patio door, end-adjustable, yellow dichromate, 1.5" wheel diameter, .69" housing width



MODEL:PR606C

Tandem roller, patio door, end-adjustable, yellow dichromate, 1.25" wheel diameter, with installation screw 10065 unattached



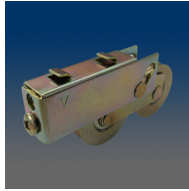
MODEL:PR606C-SS

Tandem roller, patio door, end-adjustable, stainless steel, 1.25" wheel diameter, with SS installation screw 10104 unattached



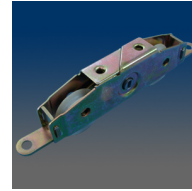
MODEL:PR608C

Tandem roller, patio door, end-adjustable, yellow dichromate, 1.25" wheel diameter, .69" housing width, with fixed tabs at housing bottom



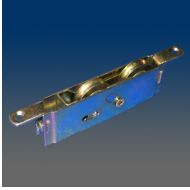
MODEL:PR608D

Tandem roller, patio door, end-adjustable, yellow dichromate, 1.5" wheel diameter, .69" housing width, with fixed tabs at housing bottom



MODEL:PR609C

Tandem roller, patio door, side-adjustable, yellow dichromate, 1.25" concave plastic wheel diameter, .72" housing width, similar to PR600 expect of wheels



MODEL:PR610C

Tandem roller, patio door, end-adjustable, yellow dichromate, 1.25" wheel diameter



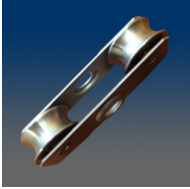
MODEL:PR611C

Tandem roller, patio door, end-adjustable, yellow dichromate, 1.25" wheel diameter, 1.375" washer



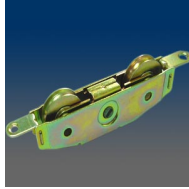
MODEL:PR613D

Tandem roller, patio door, end-adjustable, yellow dichromate, 1.5" wheel diameter, with dimples at side body



MODEL:PR500

Roller, sliding glass refrigerator door, the axles and the retain springs are unassembled which packed in separate bags inside the carton



MODEL:PR600C

Tandem roller, patio door, side-adjustable, yellow dichromate, 1.25" wheel diameter, .72" housing width



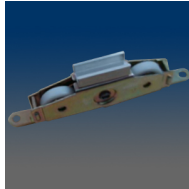
MODEL:PR600C-SS

Tandem roller, patio door, side-adjustable, stainless steel, 1.25" wheel diameter, .72" housing width



MODEL:PR601C

Tandem roller, patio door, side-adjustable, yellow dichromate, plastic wheel, 1.25" wheel diameter, .72" housing width, new bearing



MODEL:PR614C

Tandem roller, patio door, side-adjustable, yellow dichromate, plastic wheel, 1.25" wheel diameter, .72" housing width, with aluminium spacer added on PR601C



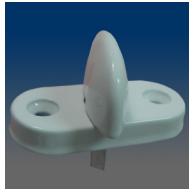
MODEL:PR100D

Single roller, patio door, side-adjustable, yellow dichromate, 1.5" wheel diameter



MODEL:1538

Patio Door Secondary Lock



MODEL:PD1630

Secondary mortise lock, with mounting screw 2pcs 10035, installed clip and installed instruction sheet in the kit