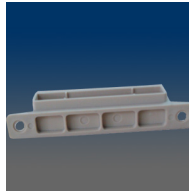




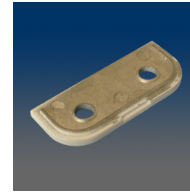
MODEL:1428

Spacer, used for 1775FM/1775 SM/1779FM/1779SM



MODEL:1433

Limit control device housing, plastic, match with 1761



MODEL:1439

Spacer, used for 1780FM



MODEL:1757

Window opening control device, in-slot mount, fit in thin slot .285" x 1.875", fit 1.7mm to 2.1mm wall thickness, with the tongue extended when packing, in-slot mount



MODEL:1761

Window opening control device, in-slot mount, fit in thin slot .285" x 1.892", fit 1.3mm to 2.1mm wall thickness. used in vinyl window



MODEL:1766

Window opening control device, zinc, in-slot mount, 2 screw holes, fit in thin slot .323" x 1.878", used in wood window



MODEL:1766-1

Window opening control device, zinc, in-slot mount, 2 screw holes, fit in thin slot .323" x 1.878", used in wood window, with screw 10115 2pcs included



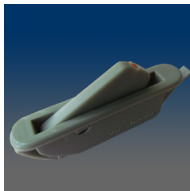
MODEL:1767

Window opening control device, in-slot mount, fit in thin slot .285" x 1.875", fit 1.3mm to 2.1mm wall thickness, tongue is always extended, in-slot mount, 1760 housing + 1757RD tongue



MODEL:1772

Window opening control device, in-slot mount, with a thinner housing than 1761, fit in thin slot .22" x 2.35", fit 1.3mm to 2.1mm wall thickness, used in vinyl window



MODEL:1773

Window opening control device, in-slot mount, with a taller tongue than 1761, fit in thin slot .285" x 1.892", fit 1.3mm to 2.1mm wall thickness, used in vinyl window



MODEL:1775FM-L-R

Window opening control device for after-market usage, face mount, handed, split version



MODEL:1775FM-002-L

WOCD: Left, face mount 1775FM-LWOCD, 2-1428** (spacer), 1-10116 (post nut), 2-10118** (9mm screw for post nut), 2-10120** (#8 x 1" Philips Pan Head Screw), 2-10120** (#8 x 1" Philips Pan Head Screw), Docs: installation, safety instruction, statement



MODEL:1775SM-L

Window opening control device for after-market usage, left, side mount



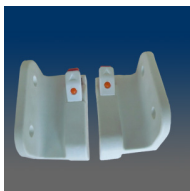
MODEL:1775SM-R

Window opening control device for after-market usage, right, side mount



MODEL:1779FM-L-R

Window opening control device for after-market usage, face mount, handed, dual action



MODEL:1779SM-L-R

Window opening control device for after-market usage, side mount, handed, dual action



MODEL:1780FM-L

Window opening control device for after-market usage, face mount, dual action, metal version, used for wood window, left



MODEL:1780FM-R

Window opening control device for after-market usage, face mount, dual action, metal version, used for wood window, right



MODEL:1782FM-L



MODEL:1782FM-R



MODEL:1775FM-L



MODEL:1775FM-R