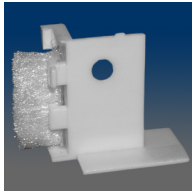
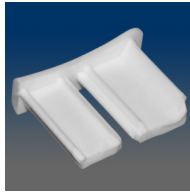


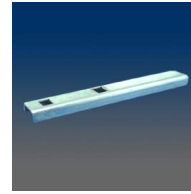
Miscellaneous



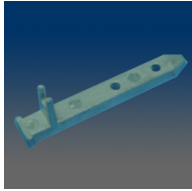
MODEL:19551-L-R



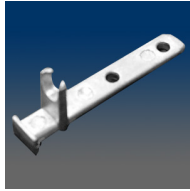
MODEL:C2300-L-R



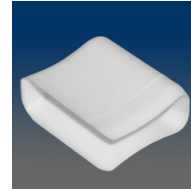
MODEL:6923



MODEL:6994



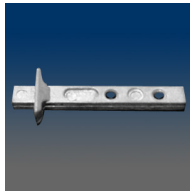
MODEL:6995



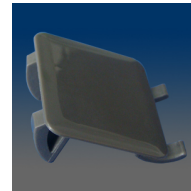
MODEL:2220



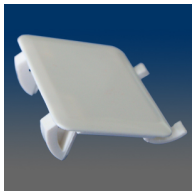
MODEL:2240



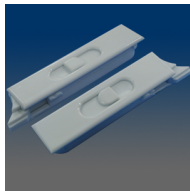
MODEL:6985



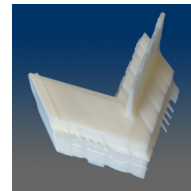
MODEL:1966



MODEL:1967



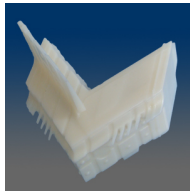
MODEL:2780FAS3



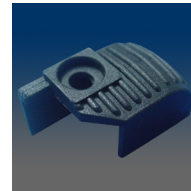
MODEL:1125L



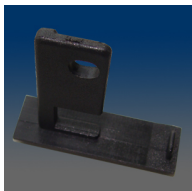
MODEL:1603SL-L



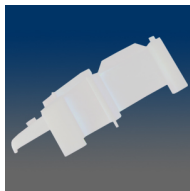
MODEL:1125R



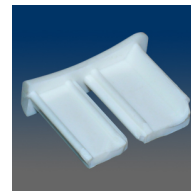
MODEL:2210R



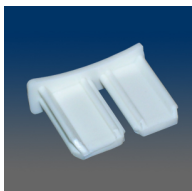
MODEL:2274R



MODEL:1111B-L



MODEL:2300R



MODEL:2300L



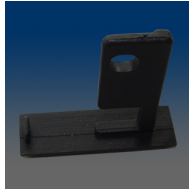
MODEL:1615SS



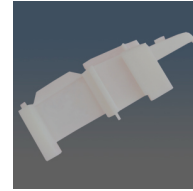
MODEL:1603SL-R



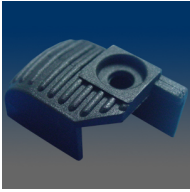
MODEL:1125B-L&R



MODEL:2274L



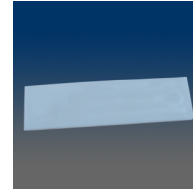
MODEL:1111B-R



MODEL:2210L

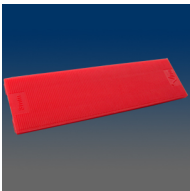


MODEL:1608



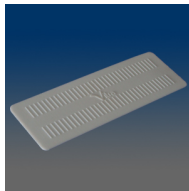
MODEL:1426

Installation shim, 2mm thick



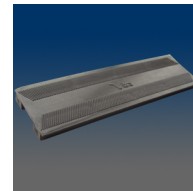
MODEL:1427

Installation shim, 3mm thick



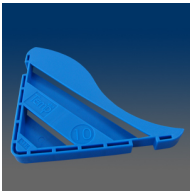
MODEL:1430

Installation shim, 1mm thick



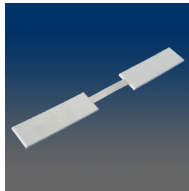
MODEL:1431

Installation shim, 5mm thick



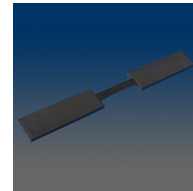
MODEL:1432

Glass corner protector, 10mm thick



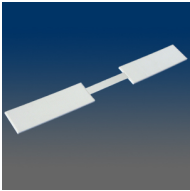
MODEL:1436

Glazing packer corner, flat, width 30mm, thickness 4mm



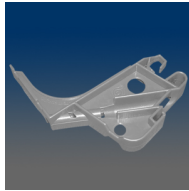
MODEL:1437

Glazing packer corner, flat, width 30mm, thickness 5mm



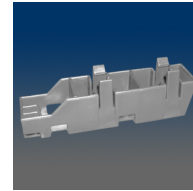
MODEL:1438

Glazing packer corner, flat, width 30mm, thickness 3mm



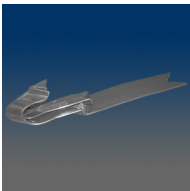
MODEL:1523

F bracket



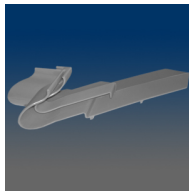
MODEL:1524

F bracket extension



MODEL:1527

Outside corner mullion, 100D PVC, like 1525 without the flange



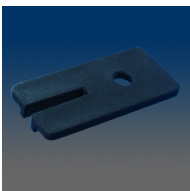
MODEL:1528

Inside corner mullion, 100D PVC, like 1526 without the flange



MODEL:1532

G bracket, HDPE

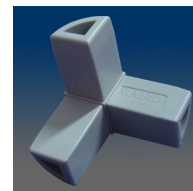


MODEL:1441



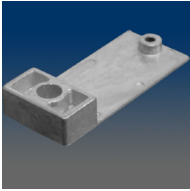
MODEL:1101

Showcase connector, plastic, triple legs



MODEL:1101VP

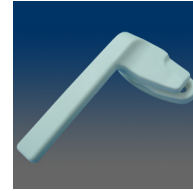
Showcase connector, plastic, triple legs, with logo "VIPERSA" on one leg



MODEL:1412
Hopper shoe, zinc, mill finish



MODEL:1510
NYLON



MODEL:1515
Hopper lock handle, plastic
(cust PN 462-021; no need printed on carton)



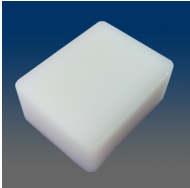
MODEL:1540L
Hopper lock handle, basement, plastic handle, with steel hook, left



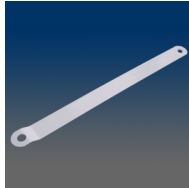
MODEL:1540R
Hopper lock handle, basement, plastic handle, with steel hook, right



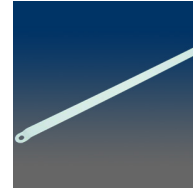
MODEL:1542
Hopper lock handle, plastic, tongue is longer .175" than 1515



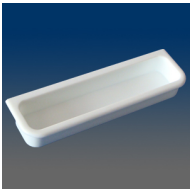
MODEL:1550
NYLON



MODEL:1696
Arm, hopper hinge, 8" length



MODEL:1697
Arm, hopper hinge, 14" length



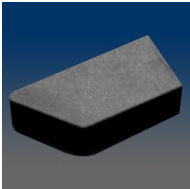
MODEL:1544



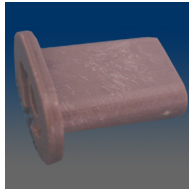
MODEL:1543L



MODEL:1543R



MODEL:2866R
Tilt latch tongue cover, plastic, right



MODEL:1017
Plug, intermediate jamb, plastic



MODEL:1018
Plug, intermediate jamb, plastic



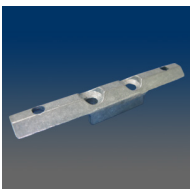
MODEL:1080
Tubular clip, stainless steel



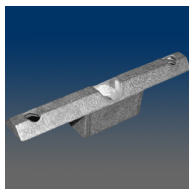
MODEL:1082
Pin with screw, aluminum pin assembled with SS screw



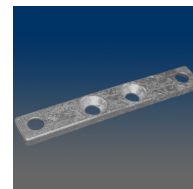
MODEL:14013
Mullion bracket, zinc, mill finish, similar to 14102



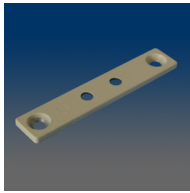
MODEL:1410
Meeting rail anchor, zinc die-cast



MODEL:14101
Meeting rail anchor, zinc, mill finish



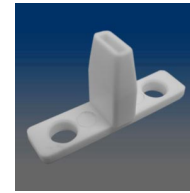
MODEL:14102
Keeper rail adapter, zinc, mill finish



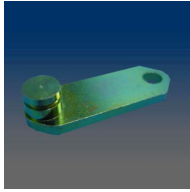
MODEL:14103
Mullion connector, width .515", zinc, powder-coating, similar to 14102



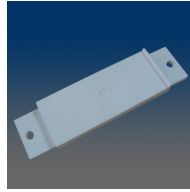
MODEL:1413
Pass through clip, zinc, mill finish



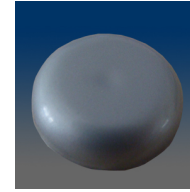
MODEL:1416
NYLON



MODEL:1419
Steel connect plate, yellow chromated, for RV window



MODEL:1424
Air seal block, PVC



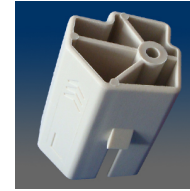
MODEL:1425
Screw cap, plastic



MODEL:1520L
NYLON



MODEL:1520R
NYLON



MODEL:1521L
NYLON



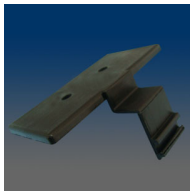
MODEL:1521R
NYLON



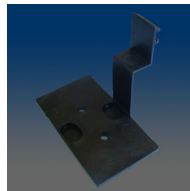
MODEL:1530
Fixed panel bracket, steel, powder-coating, with screws included



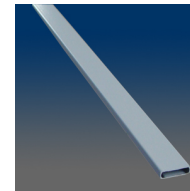
MODEL:1531
Security bracket, steel, white zinc plated



MODEL:1539
Fixed panel top bracket, plastic, customer PN 3920201031FB



MODEL:1541
Fixed panel top bracket, plastic, customer PN 3930201031FB



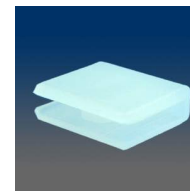
MODEL:1607
Aluminum bar, long, cutting into actual suitable length when using



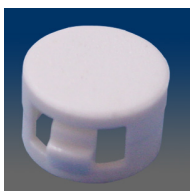
MODEL:1608-13.5
Aluminum bar reinforcement, 13.5" long



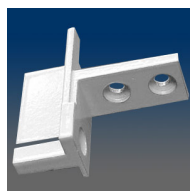
MODEL:1608-23.5
Aluminum bar reinforcement, 23.5" long



MODEL:1951
Hole plug, plastic



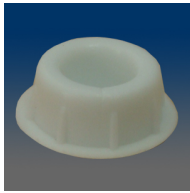
MODEL:1952
Installation hole plug, plastic



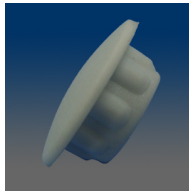
MODEL:1953
Meeting rail clip, zinc



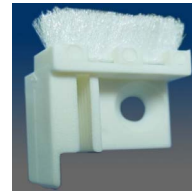
MODEL:1954
Hole plug, plastic



MODEL:19541
Hole plug, plastic, with extended ribs than 1954



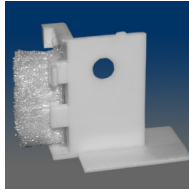
MODEL:1954B
Hole plug, plastic, big



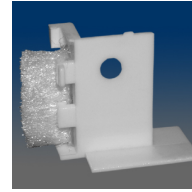
MODEL:1955L
Dust plug, #6 hole, left



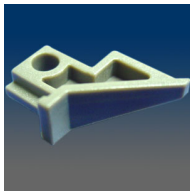
MODEL:1955R
Dust plug, #6 hole, right



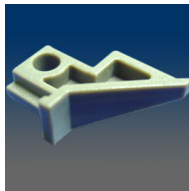
MODEL:19551-L
Dust plug, #4 hole, left



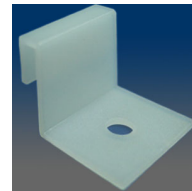
MODEL:19551-R
Dust plug, #4 hole, right



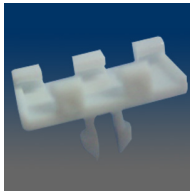
MODEL:1956L
NYLON



MODEL:1956R
NYLON



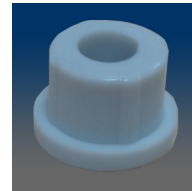
MODEL:1957
NYLON



MODEL:1958
Holder, plastic, weather strip



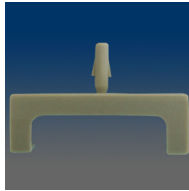
MODEL:19591
Meeting rail clip, zinc, powdered



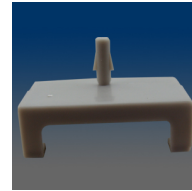
MODEL:1960
Plastic bushing, .25" through hole of 1040S version



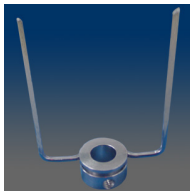
MODEL:1961
Grey decralite grid clip, small, 3/8"



MODEL:1962
Grey decralite grid clip, large, 5/8"



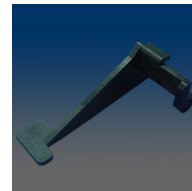
MODEL:1964
Grey decralite grid clip, largest



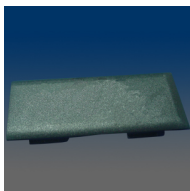
MODEL:1SS
Fork, stainless steel



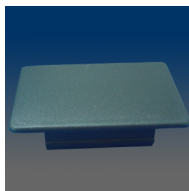
MODEL:2SS
Fork, stainless steel



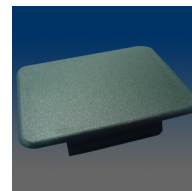
MODEL:2400
Latch, plastic



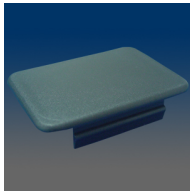
MODEL:2408
Snap-in cover, ABS



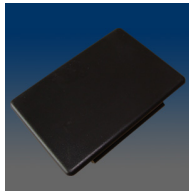
MODEL:24081
Large stake pocket, ABS



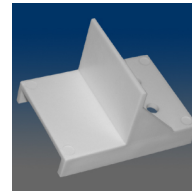
MODEL:24082
Medium stake pocket 4, ABS



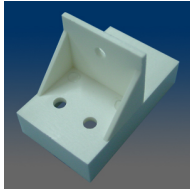
MODEL:24083
Small stake pocket 4, ABS



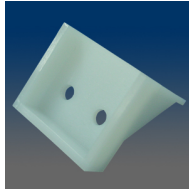
MODEL:24084
Large stake pocket 4, ABS



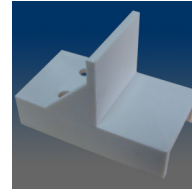
MODEL:2991
NYLON



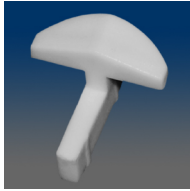
MODEL:2991B
NYLON



MODEL:2991C
NYLON



MODEL:2991E
NYLON



MODEL:2992
NYLON



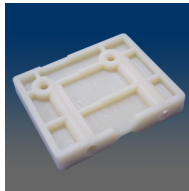
MODEL:2997
Small sash glide, POM



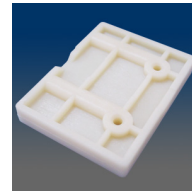
MODEL:5100
Attached pin housing, zinc die-cast



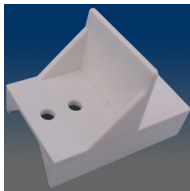
MODEL:51004
Attached pin housing, aluminum die-cast



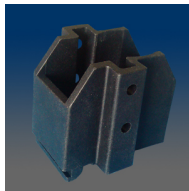
MODEL:5104
Screw block, length 2.4"



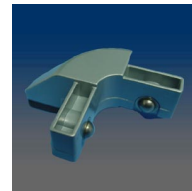
MODEL:5105
Screw block, length 2.6"



MODEL:5106 L-R
Flanker stop, plastic, handed



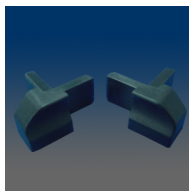
MODEL:5108
Shear block, frame connector, plastic, black



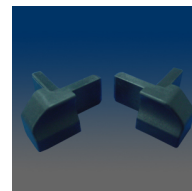
MODEL:5120
Classic corner, zinc



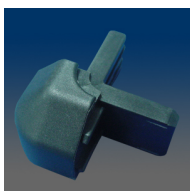
MODEL:51204
Classic corner, aluminum



MODEL:5121L
Revised S/F interior corner, plastic, left, black



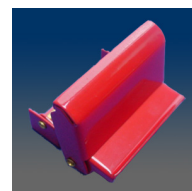
MODEL:5121R
Revised S/F interior corner, plastic, right, black



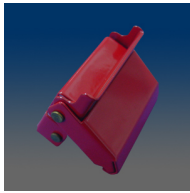
MODEL:5122
Revised S/F cab corner, plastic, black



MODEL:5123
Revised S/F rear corner, plastic, black

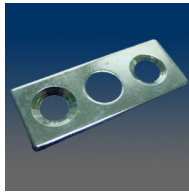


MODEL:5200
Clip, lock assembly, red color



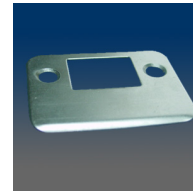
MODEL:5201

Clip, lock assembly, red color



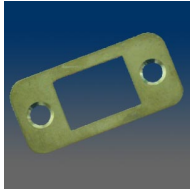
MODEL:5203

Head jam keeper, steel, plated



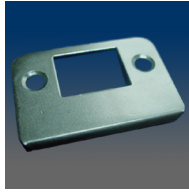
MODEL:5204

Strike plate, stainless steel



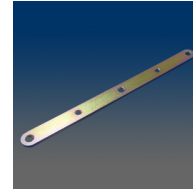
MODEL:5205

Dead bolt plate, zinc, mill finish



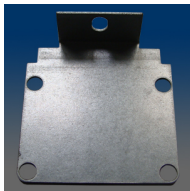
MODEL:5206

Strike plate, stainless steel



MODEL:5208

Steel plate, yellow chromated, .118" thick



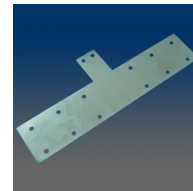
MODEL:5209

Ballast cover end cap, .04" thick, galvanized steel



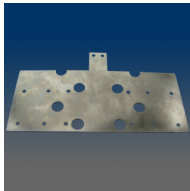
MODEL:5210SS

Jamb clip, prebent at a 90 degree angle, stainless steel



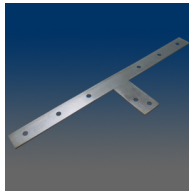
MODEL:5211

Cobalt gusset plate, .047" thick, galvanized steel



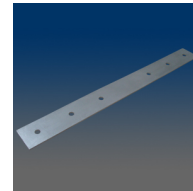
MODEL:5212

Steel plate, .047" thick, galvanized steel, cust PN 1225A



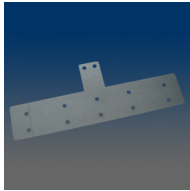
MODEL:5213

Steel plate, .060" thick, galvanized steel, cust PN 1270A



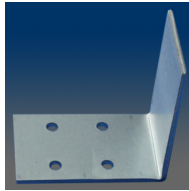
MODEL:5214

Steel plate, .060" thick, galvanized steel, cust PN 1271A



MODEL:5215

Steel plate, .032" thick, galvanized steel, cust PN 12-7578



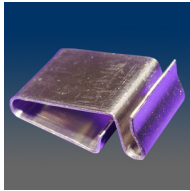
MODEL:5216

Shipping clip, for patio door, galvanized steel, through hole, #8 screw, cust PN 3015008400



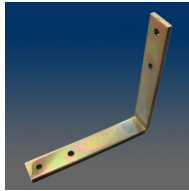
MODEL:5217

Tension spring, stainless steel



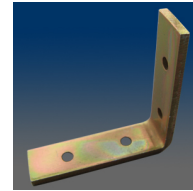
MODEL:5218

Crossbar clip, stainless steel



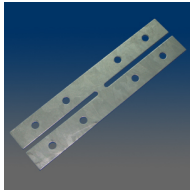
MODEL:5219

Pike slider door bracket, .098" standard cold rolled steel, yellow chromated



MODEL:5220

Pike slider door bracket, .098" standard cold rolled steel, yellow chromated



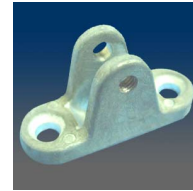
MODEL:5221

Gavanized "H" bracket, .032" thick



MODEL:7700

Large swivel, aluminum



MODEL:7701

Small camel back with screw, zinc, mill finish



MODEL:AG-1

Aluminum gear



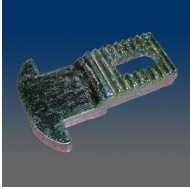
MODEL:AH-1000

Hook



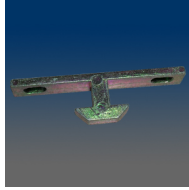
MODEL:AH-2000

Hook



MODEL:S500-001

Tongue hook of S500-007, zinc, galvanized



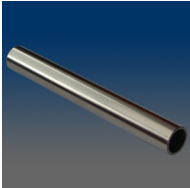
MODEL:S500-002

T-shaped hook of S500-007, zinc, galvanized



MODEL:S500-007

Window latch assembly, including plastic and zinc parts



MODEL:ST-6140



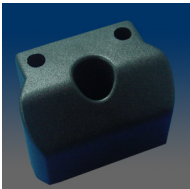
MODEL:UH001

Brass plated multipurpose single hook



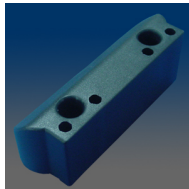
MODEL:UH002

Brass plated multipurpose single hook



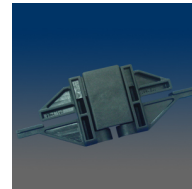
MODEL:2404

Revised S/F first hinge end cap with lip, plastic



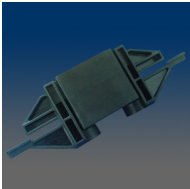
MODEL:2405

Revised S/F second hinge cap with lip, plastic



MODEL:2406

Tail hinge assembly, assembled with plastic short middle joint, plastic arms, screw and nut



MODEL:2407

Cab hinge assembly, assembled with plastic long middle joint, plastic arms, screw and nut



MODEL:2409

Revolution pivot block, plastic



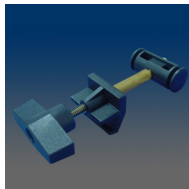
MODEL:2500

Long rear spring clamp assembly, plastic boby assembled with bolt parts



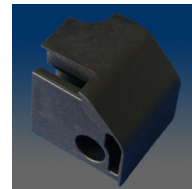
MODEL:2501

Rear spring clamp assembly, plastic boby assembled with bolt parts

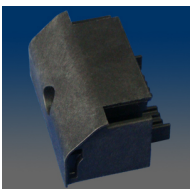


MODEL:2502

Cab clamp assembly, plastic boby assembled with bolt parts



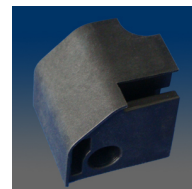
MODEL:2415R



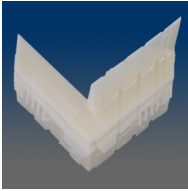
MODEL:2414



MODEL:2416



MODEL:2415L



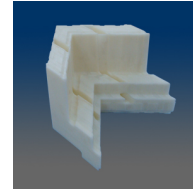
MODEL:1111L-R

Corner, used on sill, handed, double hung window, apply on CT01&CT02 profiles



MODEL:1112L-R

Corner, handed, used on head, double hung window, apply on CT02&CT03 profiles



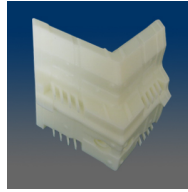
MODEL:1113

Corner, apply on frame SV100 of 1100 series window



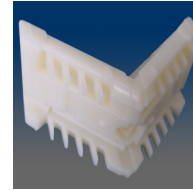
MODEL:1114

Corner, double hung/ picture window, apply on CT504 profile



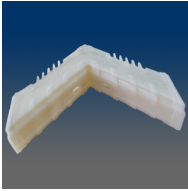
MODEL:1115

Corner, double sliding window, apply on CT505 profiles



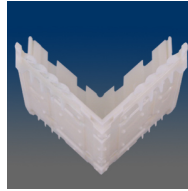
MODEL:1116

Corner, used on sash, double hung/ double sliding window, apply on CT06 profile



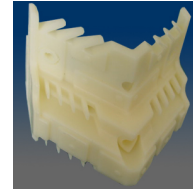
MODEL:1119

Corner, used on sash, apply on sash SV104 of 1100 series window



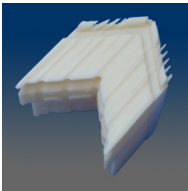
MODEL:1120

Corner, used on frame, casement/ awning window, apply on CT20 profile



MODEL:1121

Corner, used on sash, casement/ awning window, apply on CT21 profile



MODEL:1122

Corner, casement/ awning picture window, apply on CT22 profile



MODEL:1126

Corner, used on sash, double hung/ double sliding window, apply on CT 606 profile