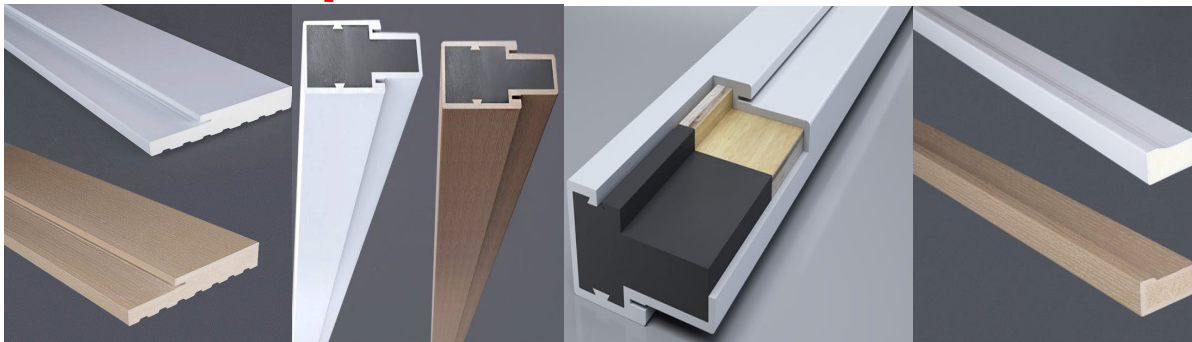




# Aribell

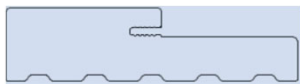
The Leader in Door & Window Components

## NPL Composite Profiles



- ▶ Available in **Textured Woodgrain, Blue White or US Warm White.**
- ▶ Woodgrain features universal grain to compliment a wide range of wood species;
- ▶ White profiles are PVC capstock and are pre-finished and UV stabilized.
- ▶ Composite profiles will not absorb or wick moisture.
- ▶ Holds screws and nails better than wood.
- ▶ 20 Min Fire Rated
- ▶ Easy to Stain or Paint - no sanding or priming required.
- ▶ Mull Posts feature LVL core for superior strength and stability.
- ▶ Composite block at bottom of Mull Post prevents any moisture wicking.

### DOOR JAMBS



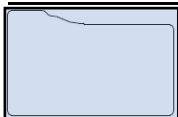
#### Stock Sizes

4-9/16"  
6-9/16"  
7-1/4"

#### Sizes Available by Special Order

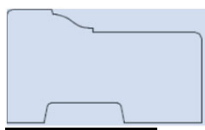
5-1/4"    8-1/2"  
5-5/8"    9-1/4"  
7-5/8"

### BRICKMOULDS



Flat Back

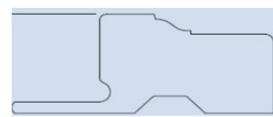
**Flat Back BM is stock**  
Grooved, J-Channel &  
Flanged are available by  
special order.



Grooved

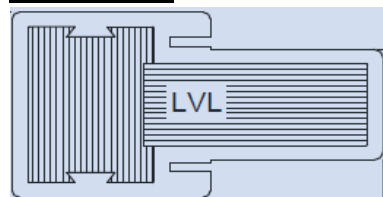


J-Channel



Flanged

### MULLPOSTS



#### Stock Sizes

4-9/16" x 2.5"  
6-9/16" x 2.5"

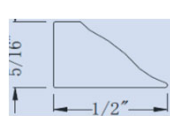
#### Sizes Available by Special Order

3-9/16" x 2"  
3-9/16" x 2.5"

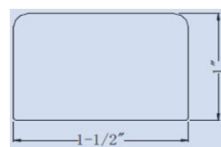
### STOCK ACCESSORIES



Glazing Transom Bead



Glazing Sidelite Bead



Mull Cap



Burlap/SDL - pre-taped  
1-1/4" and 2" widths

### STOCK ASTRAGALS

