



**Aribell**  
*The Leader in Door & Window Components*

Aribell Products Limited  
380 Four Valley Drive  
Vaughan ON L4K 5Z1  
Tel: 905.669.5001 Fax: 905.669.5030  
www.aribell.ca

## WOCD



**1800-LR**

Casement Window Opening Control Device (WOCD) Pat. Pending



**1799**

Dual Action routed in WOCD.



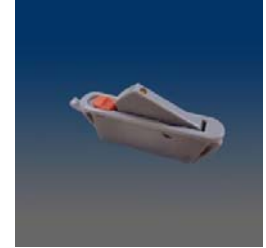
**17982**

dual action WOCD, OEM installation



**17981**

Dual action routed in WOCD. WOCD 1798 with smaller tongue, only one needed per sash.



**1798**

Dual action routed in WOCD. Only one needed per sash.



**1796**

Single action routed in WOCD.



**1795-LR**

balance pocket WOCD, single action.



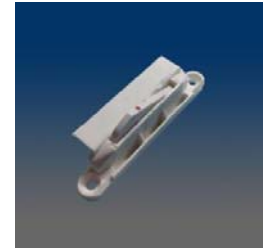
**1794**

dual action WOCD, screw mount, zinc



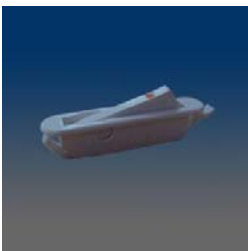
**1793-LR**

single-action WOCD, fits with balance cover



**1793-LR**

single-action WOCD, fits with balance cover



**1791**

single action WOCD, shallow body



**1789A-L/R**

Dual action routed in WOCD.



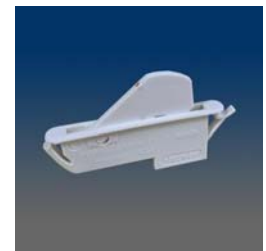
**1788A**

Single action routed in WOCD



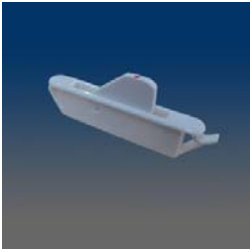
**1787-LR**

balance pocket WOCD, single action



**17831-SB**

Single action WOCD



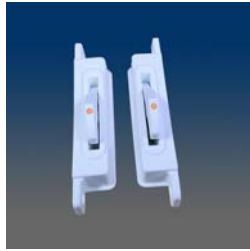
**1783**

Single action routed in WOCD.



**1782FM-LR**

aftermarket WOCD, single action, face mount, sold as paired kit



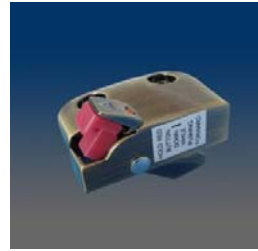
**1781AX1433A**

1781A-SB assembled with 1433A WOCD housing



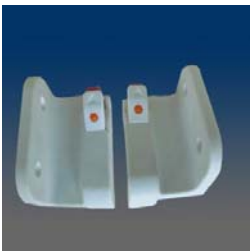
**1781A**

single action WOCD



**1780FM-LR**

aftermarket WOCD, dual action, face mount, zinc, sold as kit L or R



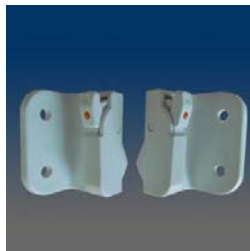
**1779SM-LR**

aftermarket WOCD, dual action, side mount, sold as kit L or R



**1779FM-LR**

aftermarket WOCD, dual action, face mount, sold as kit L or R



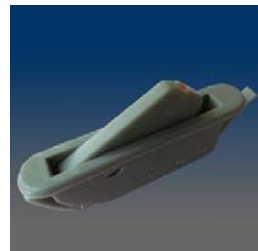
**1775SM-LR**

aftermarket WOCD, single action, side mount, sold as paired kit



**1775FM-LR**

aftermarket WOCD, single action, face mount, sold as paired kit



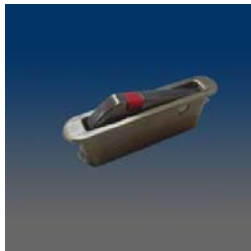
**1773**

single action WOCD, extended tongue



**1766A**

single action WOCD, screw mount, zinc



**1764**

single action WOCD for wood, zinc



**1761B**

single action WOCD, notched barb



**1761A**

single action WOCD



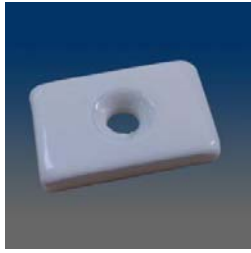
**1740FM-LR**

aftermarket WOCD, dual action, face mount, sold as kit L or R



**1555**

balance pocket holder for  
0.285" x 1.875" WOCD



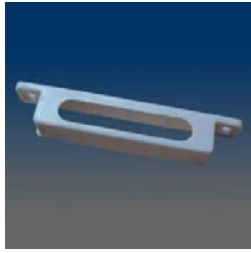
**1553-1**

WOCD strike plate, 1 pc #4 x  
0.375" flat head screw included



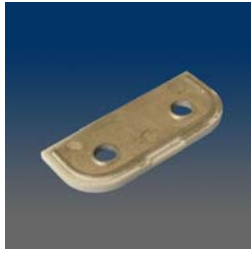
**1508**

drill jig for 1775/79FM  
installation



**1458**

WOCD holder, fitting 1788A &  
1789A-L/R



**1439**

spacer for 1780FM, zinc



**1433A**

Wood housing



**1433**

WOCD holder for 1.875" x  
0.285" devices



**1428**

spacer, used for 1775FM/  
1775SM/ 1779FM/ 1779SM