

SCREEN HARDWARE



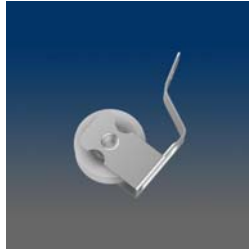
SR111

screen roller



SR110

Screen Roller



SR109

screen door roller, screw mount



SR107

screen door corner & roller assembly



SR106

screen door corner & roller assembly, also available w/ SS wheel



SR105

screen door roller, screw mount, SS also available



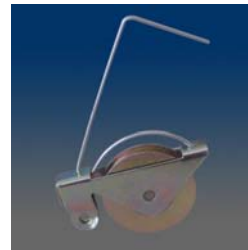
SR104

screen door roller, screw mount, plastic wheel



SR103

screen door roller, screw mount, SS also available



SR101C

screen door roller, steel, works with 1059 & 1068, SS also available



SR100C

screen door roller, steel, works with 1059 & 1068, SS also available



SR100

screen door roller, steel, works with 1059 & 1068, SS also available



S512

screen door latch assembly



S511

screen door latch assembly



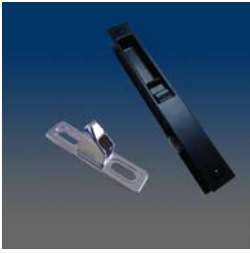
S508LH-1470A

screen door latch assembly w/ keeper



S507-LR

screen door latch assembly, handed



S506LH-1470

screen door latch assembly w/
keeper



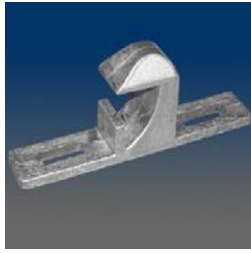
S505A-LR

screen door latch assembly,
handed



S504A-LR

screen door latch assembly,
handed



PM200

screen door keeper



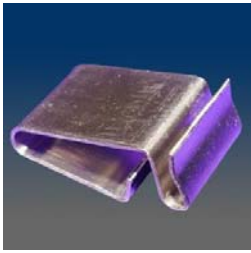
CONCEPT 2976

Available with Steel, Stainless
Steel and plastic wheel.



5224

Screen Clip in Left and Right



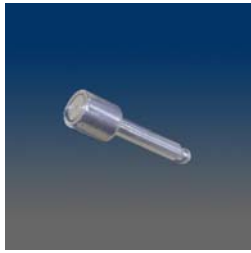
5218

Crossbar clip, stainless steel



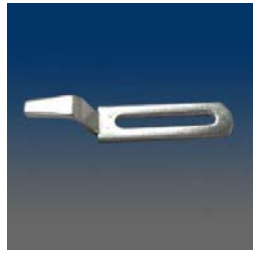
5217

FLAT SPRING, SS



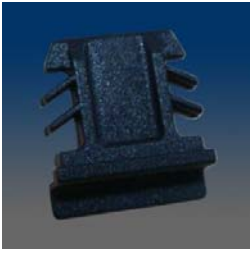
2242

screen pin



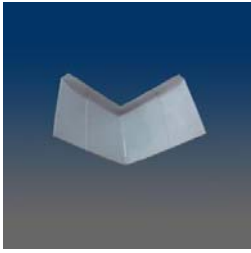
1973

screen door keeper



1963

Screen crossbar clip, plastic



1481

Door Sill Pan Corner



1472

screen door pull handle



1471

screen door pull handle



1449.604

Screen lock components



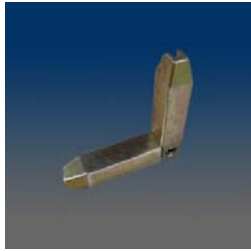
1449-04

Screen lock plate



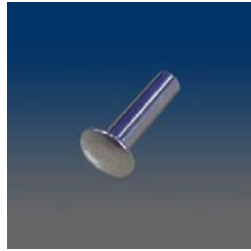
1449-04

Screen lock plate



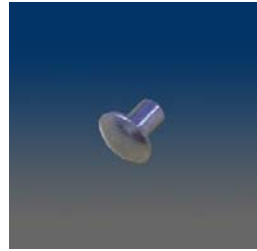
14109

Screen Hinged Connector



11388-05

.630" long rivet for 11388-02



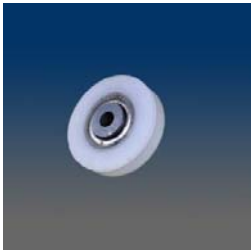
11388-04

.157" Rivet for 11388-01



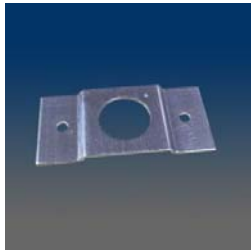
11388-03

Roller adjuster.



11388-02

Roller Wheel



11388-01

Roller mounting bracket



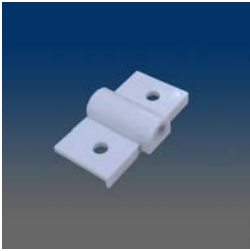
11386C

Sash roller 11386 with composite wheels, SS axle



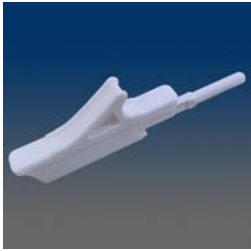
1091A-LR

slide bolt corner assembly



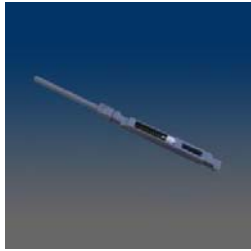
10915

screen plunger housing



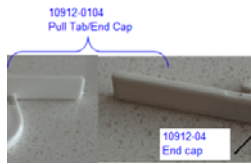
10914

screen latch



10913

Screen latch, plastic plunger+spring+blocking dot assembly



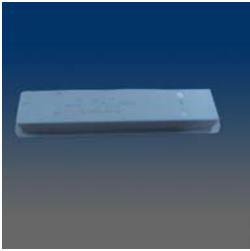
10912-0104

Pull tab/End cap, packed in same box w/ separate bags, matched with 10912



10912

screen latch



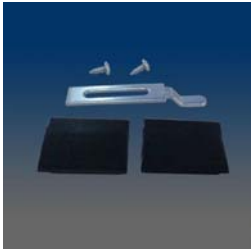
10911

screen grip



1090A-LR

slide bolt corner assembly



1089

J strike kit



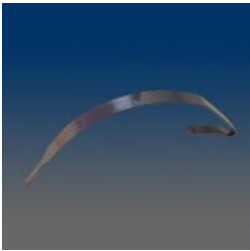
1088

Screen plunger, aluminum shaft
assembled with spring



10792

Tension Spring



10791

screen spring



1078

CASEMENT SCREEN PLUNGER



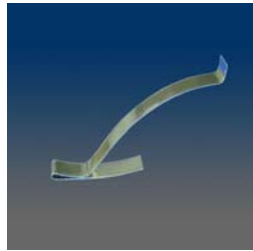
1075

DOG & SPRING SCREEN
TRIGGERS



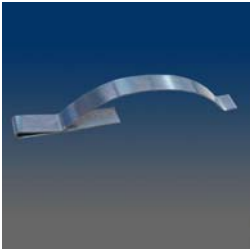
1074

screen spring



1071

screen spring



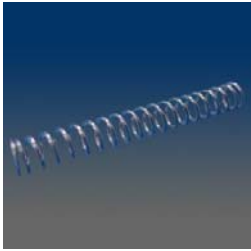
1069

screen spring



1068

Screen corner, zinc, with
adjustable screw, mill finish



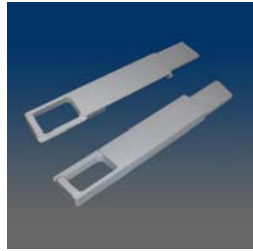
1067

Coil spring, white zinc-plated



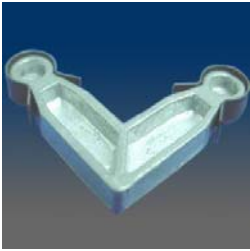
1066

Dog & Spring for screen trigger,
plastic dog



1065-LR

slide bolt, plastic, handed



1060

Screen corner, zinc, internal, with spring attached on the head, mill finish



1059SS

Screen corner, plastic, adjustable Stainless Steel screw, similar to 1068



1059

Screen corner, plastic, adjustable screw, similar to 1068



1056

Screen corner, zinc, internal, with dimples, mill finish



1054

Screen corner, zinc, internal, with dimples, mill finish



10533

slide bolt, plastic



10532

slide bolt, plastic



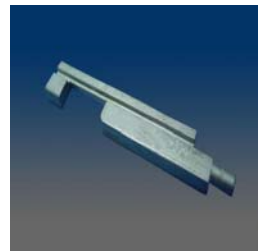
1053-LR

slide bolt, zinc, handed



1052-LR

slide bolt, plastic, handed



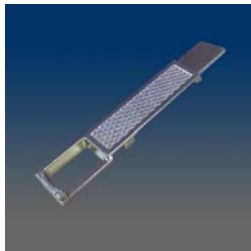
1051SS

slide bolt, stainless steel



10513

screen corner, mitered, aluminum



10510-L/R

Trigger Bolt for storm window glass panel, left/right



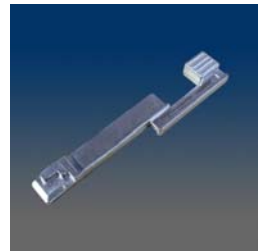
10509

Bottom corner for aluminum screen panel, left/right



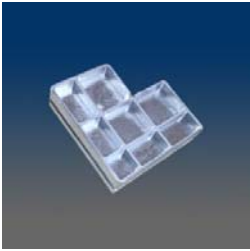
10508-L/R

Top Corner for aluminum screen panel, Left/Right



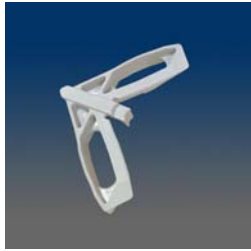
10507-L/R

Trigger bolt for aluminum screen, Left/Right



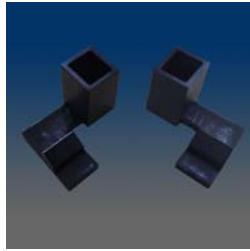
10504

Screen Corner



10503

screen corner, mitered



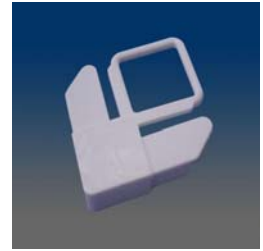
10502-LR

screen clip, bottom, handed



10501

screen clip, top



1047

screen corner w/ pull tab, plastic



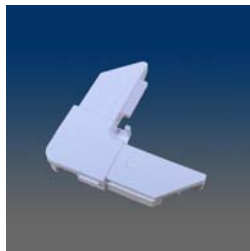
1046

screen corner, plastic



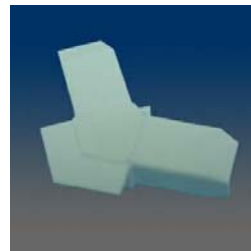
10454-02

slide bolt



10454-01

screen corner



1043

Screen corner, plastic, external, flanged, 120 degree



1042

Screen corner, plastic, external, flanged, 60 degree



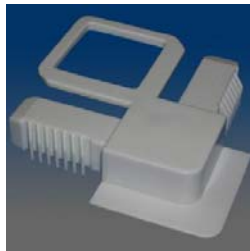
10398

Screen corner, plastic, external, flanged



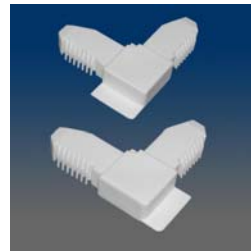
10392-LR

screen corner, handed, w/ stop



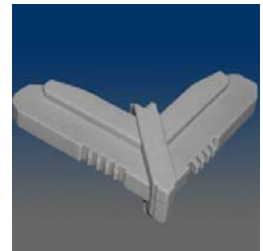
10391

Screen corner, plastic, external, flanged, with pulling ring, match 10392L/R



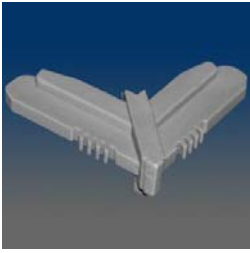
1039-LR

screen corner, handed



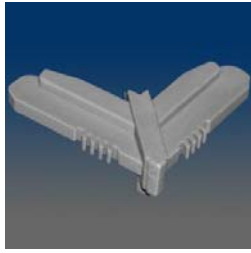
10386

Screen corner, plastic, external, miter, stop, .28 x .46" leg, match with 10376



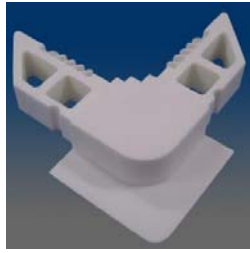
10385-30GF

Screen corner, plastic, external, miter, stop, .22 x .46" leg, match with 10375, 30% glass filled nylon



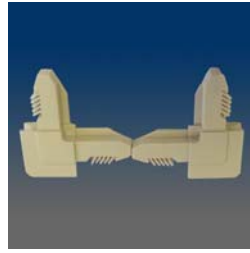
10385

Screen corner, plastic, external, miter, stop, .22 x .46" leg, match with 10375



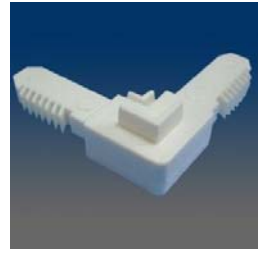
10384

Screen corner, plastic, external flanged



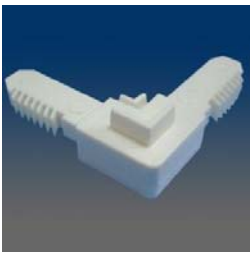
10383-LR

screen corner, handed, w/ stop



10382

screen corner, plastic, external, w/ stop, works w/ 10371 & 10381



10381

screen corner, plastic, external, w/ stop, works with 10371 & 10382



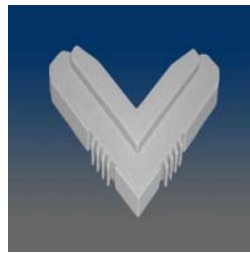
1038-LR

screen corner, handed, w/ stop



10379

Screen corner, plastic, internal, .31 x .49" leg



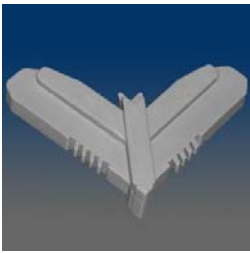
10378

screen corner, mitered



10377

Screen corner, plastic, internal, .22 x .32" leg



10376

Screen corner, plastic, external, miter, .28 x .32" leg, match with 10386



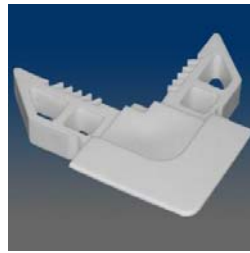
10375-30GF

Screen corner, plastic, external, miter, .22 x .32" leg, match with 10385, having two material: PA6, PA6+30%GF



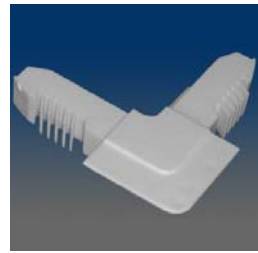
10375

Screen corner, plastic, external, miter, .22 x .32" leg



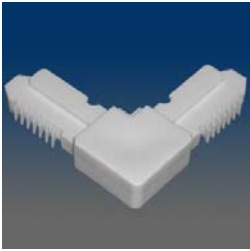
10374

Screen corner, plastic, flanged, external, .31 x .49" leg



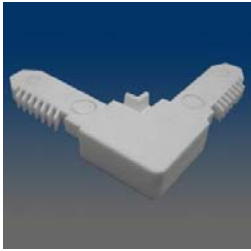
10373

Screen corner, plastic, flanged, external, .33 x .51" leg



10372

Screen corner, plastic, external,
.27 x .53" leg



10371

screen corner, plastic, external,
works with 10381 & 10382



1037

Screen corner, plastic, external,
flanged, no tab, .22 x .51" leg,
match with 1038L/R



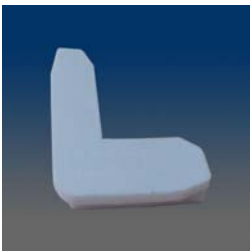
10367

screen corner, internal, glass
filled nylon



10366

screen corner, internal, mitered,
steel



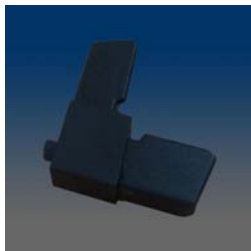
10365

screen corner



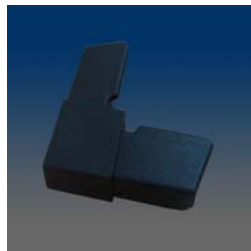
10364

screen corner w/ bottom peg



10363

screen corner w/ top peg



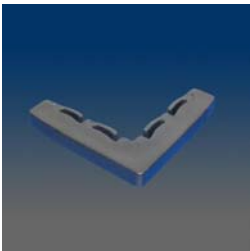
10362

screen corner w/ stop



10361

screen corner, thinner version
of 1036



1036

screen corner, internal



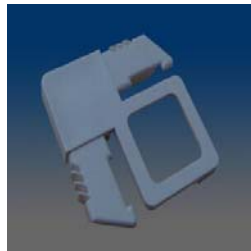
10355

screen corner



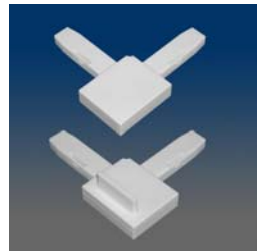
10354

Screen corner, plastic, external,
miter, stop, .315 x .535" leg,
match 10344 yrdy



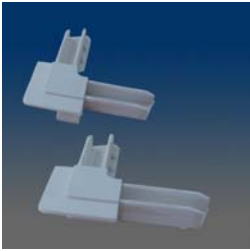
10353

Screen corner, plastic, non-
handed, external



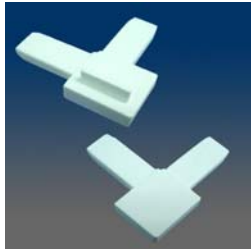
10352-LR

screen corner w/ stop, handed



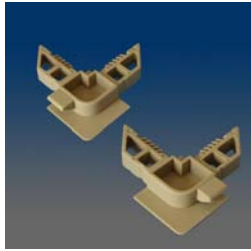
10351-LR

screen corner w/ stop, handed



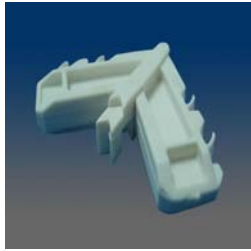
1035-LR

screen corner, handed, w/ stop



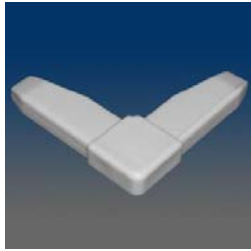
10345-LR

screen corner w/ stop, handed



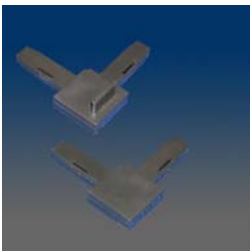
10344

screen corner, mitered



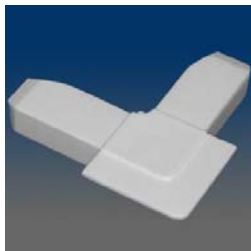
10343

Screen corner, plastic, external



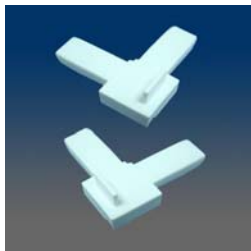
10342-LR

screen corner w/ stop, handed



10341

Screen corner, plastic, flanged, external, .35 x .51" leg



1034-LR

screen corner, handed, w/ stop



1032

Screen corner, plastic, internal



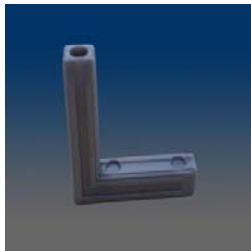
10314

screen corner, zinc



10313-LR

screen corner w/ tab, zinc



10312

Screen corner, internal



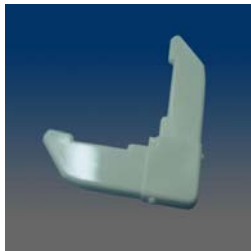
10311

Screen corner, internal



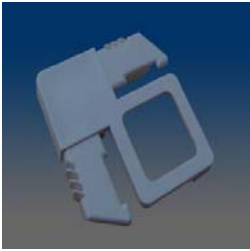
10310

Screen corner, internal



1031

screen corner



10308

Screen corner, with L shape stop and pull tab



10307

Plastic screen corner with latch and stop



10306

Plastic screen corner with latch



10305

Plastic screen corner with stop



10304

Plastic screen corner



1029

Knife latch, nylon, with wider tab than 1021



1028

screen tab



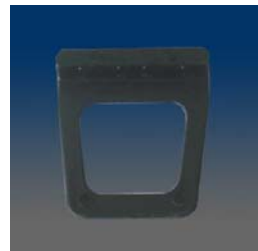
10273

Screen plunger lever assembly, with aluminum pole width .220" and length .962", three components packed in separate bags and put in one carton



1027

screen plunger assembly



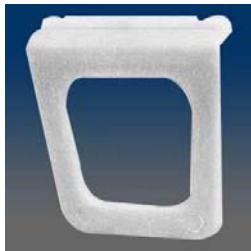
1026

screen pull tab



1025

Knife latch, reinforced nylon, thinner than 1021



1023

screen pull tab



1022

Knife latch, nylon



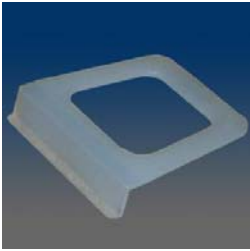
1021A

Knife latch, the PC version of 1021



1021

Knife latch, nylon



1020

Screen pull, nylon



1019

Knife Latch, nylon



1012C

mark X pin



1012A

Mark "X" Pin, 1.303" total length



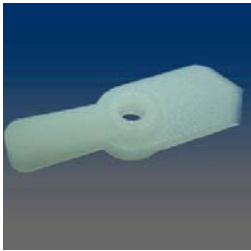
1012

Mark "X" Pin, 1.15" total length



1011

screen tab, nylon



1010

screen tab, nylon