



KEEPERS



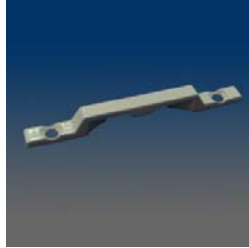
CONCEPT 3424

Composite sash keeper, surface mount, 2.25" C/L, rounded holes, match with 31811 lock



9397

Keeper used with 360/684



9395

Top mount keeper, 2.062" C/L, open back, match with 9706 lock

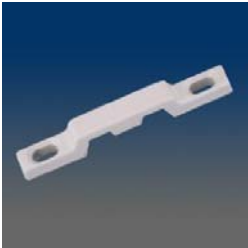


9392



9389

Keeper, sash, surface mount, #6 screw, 2.25" C/L, open back, material: zinc alloy



9388

Keeper, sash, surface mount, #6 screw, 2.062" C/L, closed back, material: zinc alloy



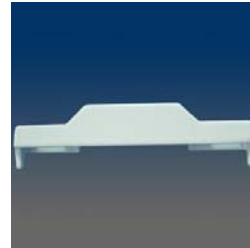
9387

Top mount keeper, 2.25" C/L, open back



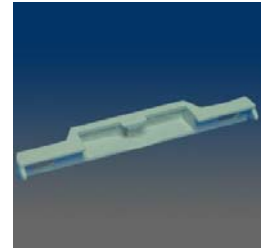
9386B

Top Mount Keeper, 2.062" C/L



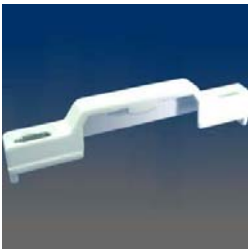
9385

Keeper, sash, surface mount, #5 screw, 2.126" C/L, closed back, material: zinc alloy, pronged



9384

Keeper, sash, surface mount, #6 screw, 2.062" C/L, closed back, material: zinc alloy, pronged, match with 690 series



9383

Keeper, sash, surface mount, #5 screw, 2.22" C/L, closed back, material: zinc alloy, pronged



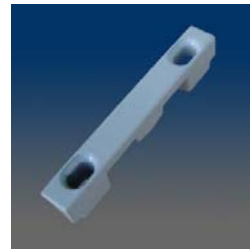
9382

Keeper, sash, surface mount, #6 screw, 2.25" C/L, closed back, material: zinc alloy, match with 9280 lock



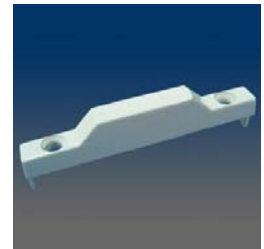
9381

Top Mount Keeper, 2.25" C/L



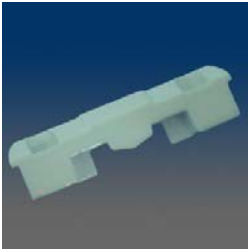
9373

Recessed mounted keeper, 1.622 C/L, match with 9825 lock



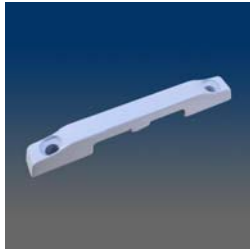
9371

"Keeper, sash, surface mount, #6 screw, 2.062" C/L, closed back, material: zinc alloy match with locks 9420 and 3420"



9370

Keeper, sash, recessed surface mount, #6 screw, 1.625" C/L, material: zinc alloy



9367

keeper



9364A

Face Mount Keeper, 1.418" C/L Slotter



9364

Face Mount Keeper, 1.418" C/L



9362

Top mount keeper, 2.126" C/L, closed back, elongated hole, match with 600 series lock



9360

Keeper, sash, surface mount, based on 9353, but with closed back and round holes, 2.062" C/L, material: zinc alloy



9359

Keeper, sash, surface mount, #6 screw, 2.126" C/L, open back, material: zinc alloy, match with both 611SL (non-hooded)



9358

Keeper, sash, surface mount, for 600 series hooded lock, #6 screw, 2.029" C/L, closed back, material: zinc alloy



9357

Keeper, sash, surface mount, for 600 series hooded lock, #6 screw, 2.062" C/L, closed back, material: zinc alloy



9356A

Keeper, sash, surface mount, for non-hooded 600 series hooded lock, #6 screw, 2.062" C/L, closed back, material: zinc alloy



9354

Keeper, sash, face mount, for 600 series non-hooded lock, #8 screw, 1" C/L, material: zinc alloy



9353

Keeper, sash, surface mount, for 600 series non-hooded lock, #6 screw, 2.126" C/L, open back, material: zinc alloy



9352

Keeper, sash, recessed surface mount, for 600 series hooded lock, 2.062" C/L, #6 screw-base and #4 screw-head, material: zinc alloy



9351

Keeper, sash, surface mount, "seasure", for 600 series non-hooded lock, #8 screw, 2.062" C/L, material: zinc alloy and Mn



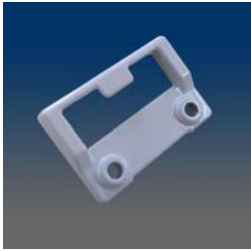
9350

Keeper, sash, recessed surface mount, for 600 series hooded lock, #8 screw, 2.079" C/L, material: zinc alloy



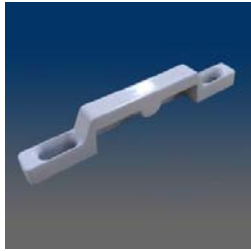
9349

Zinc keeper.



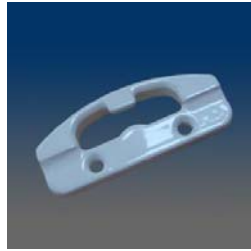
9347

Surface mounted Keeper



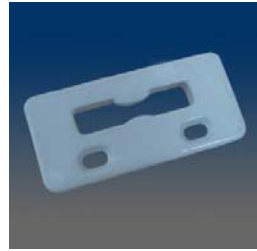
9346

Keeper, sash, surface mount, #6 screw, 2.085" C/L, closed back, material: zinc alloy



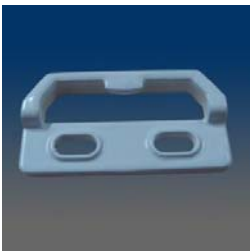
9345

Keeper, match with 619 lock



9344

Face Mount Keeper, 1.15"C/L



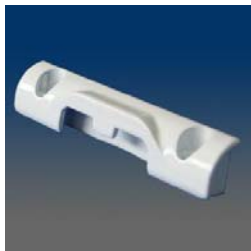
9342

Face mount keeper, 0.75"C/L, match with 9720 lock



9341

Face mount keeper, 1.15"C/L, match with 4430 lock



9340

Keeper, sash, surface mount, 2.000" C/L, closed back, #8 screw, similar to 9310, match with lock 4420, zinc alloy



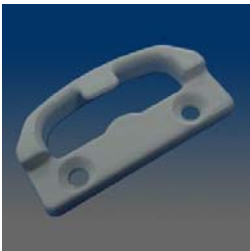
9339

Keeper, sash, face mount, 1.000" C/L, match with 3622, zinc, strength version of 9337, zinc alloy



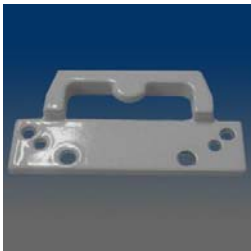
9338

Face mount keeper, 1" C/L, similar to 9321



9337

Keeper, sash, face mount, 1" C/L, similar with 9336, match with 3620, material: zinc alloy



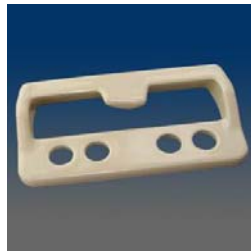
9335

Keeper, sash, face mount, match with 9227, material: zinc alloy



9334

Keeper, sash, face mount, two sets of screw holes, match with 9730, material: zinc alloy



9333

Keeper, sash, face mount, two sets of screw holes, match with 9227, material: zinc alloy



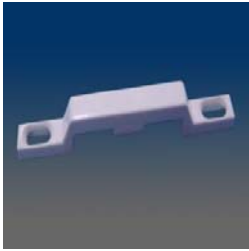
9331A

Face mounted keeper



9331

Keeper, sash, face mount, #8 screw, 1" C/L, match with 611, material: zinc alloy



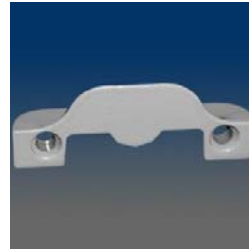
9330

Top mount keeper, 2.25" C/L, closed back, match with 9730 lock



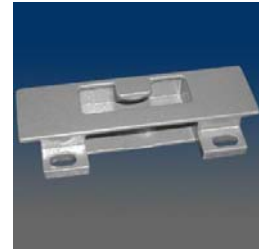
9328

Keeper, sash, face mount, #5 screw, 1.598" C/L, material: zinc alloy



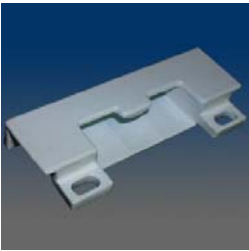
9327

Keeper, sash, recessed mount, #8 screw, 1.655" C/L, material: zinc alloy



9326

Keeper, sash, face mount, #5 screw, 1.556" C/L, material: zinc alloy



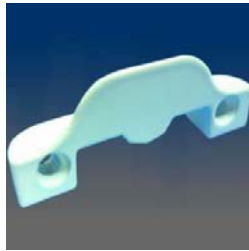
9325

Keeper, sash, face mount, #5 screw, 1.681" C/L, material: zinc alloy



9324A

Face mount keeper, 1.614" C/L, match with 9820 lock



9323

Keeper, sash, face mount, #6 screw, 1.65" C/L, open back, material: zinc alloy



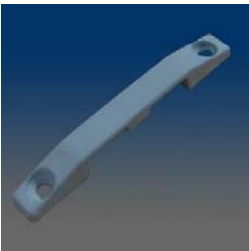
9322

Keeper, sash, face mount, #5 screw, 1.87" C/L, material: zinc alloy



9321

Keeper, sash, face mount, #6 screw, 1" C/L, material: zinc alloy



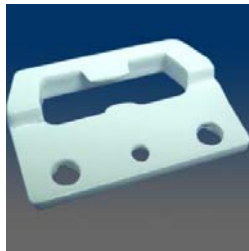
9319

Keeper, sash, surface mount, 2.062" C/L, open back, match with 9706 sash lock, material: zinc alloy



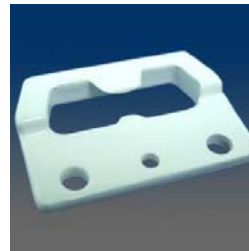
9318

Keeper, sash, face mount, #6 screw, 1" C/L, material: zinc alloy



9317

Face mount keeper, 1" C/L



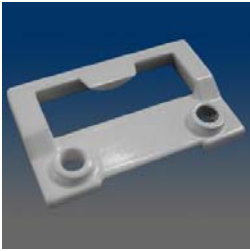
9316

Keeper, sash, face mount, #8 screw, 1" C/L, material: zinc alloy



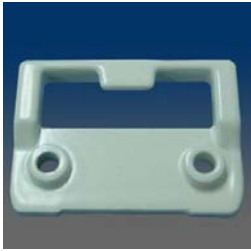
9315A

Face Mount Keeper with slotted hole, 0.749" C/L



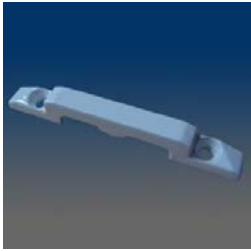
9315

Keeper, sash, face mount, #6 screw, 1" C/L, material: zinc alloy



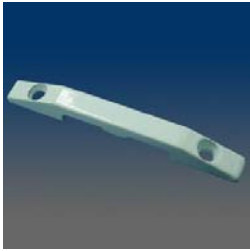
9314

Keeper, sash, face mount, #6 screw, 1" C/L, match with 9820 sash lock, material: zinc alloy



9313B

Keeper with angled screw holes



9313

Keeper, sash, surface mount, #6 screw, 2.062" C/L, closed back, match with 9721 sash lock, material: zinc alloy



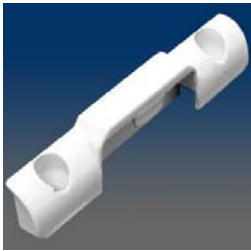
9312

Keeper, sash, face mount, #6 screw, 1" C/L, match 9710, material: zinc alloy



9311

Keeper, sash, surface mount, #6 screw, 2.062" C/L, closed back, material: zinc alloy



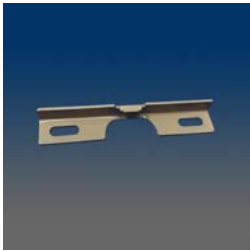
9310

Keeper, sash, surface mount, #8 screw, 2" C/L, closed back, match with 9205 sash lock, material: zinc alloy



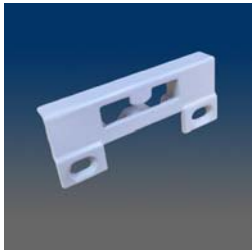
8597

top mount keeper, GT style



8596

face mount keeper, stainless steel



8595

keeper



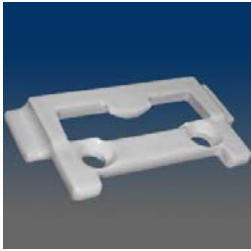
8594

Keeper for LPI Locks



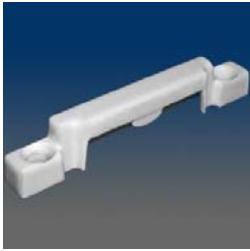
8588A

Zinc Keeper with angled mounting holes.



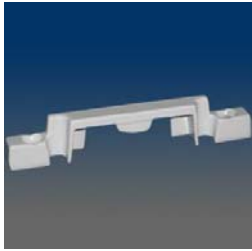
8587

Keeper, sash, face mount, .866" C/L, material: zinc alloy



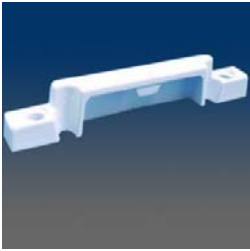
8565

Keeper, sash, surface mount, #8 screw, 2.062" C/L, closed back, material: zinc alloy



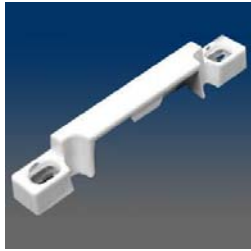
8564

Keeper, sash, surface mount, #6 screw, 2.062" C/L, open back, material: zinc alloy



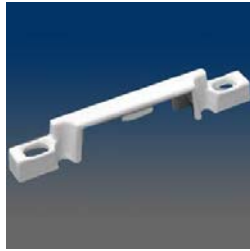
8563

Keeper, sash, surface mount,
2.062" C/L, match with 3222S
sash lock, material: zinc alloy



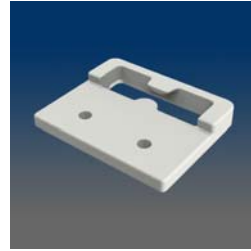
8562

Keeper, sash, surface mount,
#6 screw, 2.062" C/L, open
back, material: zinc alloy



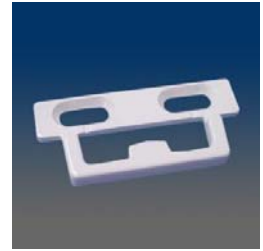
8561

Keeper, sash, surface mount,
2.062" C/L, open back, material:
zinc alloy



8528

keeper



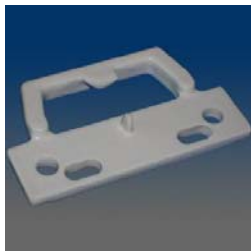
8527

Face mount keeper, 1" C/L,
match 3226SL



8526

Keeper, sash, face mount, #10
screw, .44" C/L, material: zinc
alloy



8525

Keeper, sash, face mount, 1"
C/L, material: zinc alloy



8524

Keeper, sash, face mount, #10
screw, .43" C/L, material: zinc
alloy



8522

Keeper, sash, face mount, #10
screw, .88" C/L, material: zinc
alloy



8521

Keeper, sash, face mount, #6
screw, 1" C/L, material: zinc
alloy



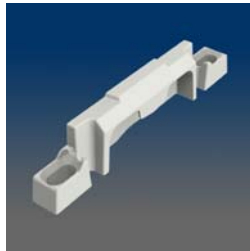
8504

Keeper, sash, surface mount,
#6 screw, 2.062" C/L, open
back, material: zinc alloy



8503

Keeper, sash, surface mount,
#6 screw, 2.062" C/L, open
back, material: zinc alloy



8500A

keeper



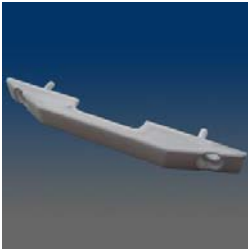
8500

Keeper, sash, surface mount,
#5 screw, 2.062" C/L, closed
back, material: zinc alloy



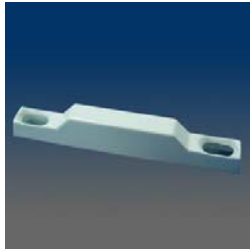
8486

keeper



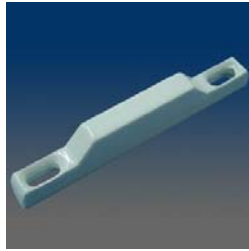
8427

Keeper, sash, surface mount



8426

Keeper, sash, surface mount, #6 screw, 2.181" C/L, closed back, material: zinc alloy, match with 3424



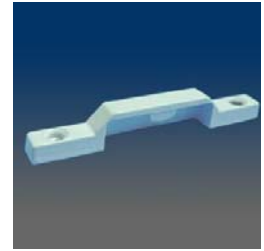
8425

Keeper, sash, surface mount, #6 screw, 2.181" C/L, closed back, material: zinc alloy



8424

Keeper, sash, face mount, #5 screw, .433" C/L, material: zinc alloy



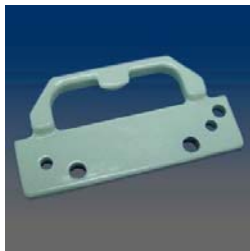
8423

Keeper, sash, surface mount, #8 screw, 2.25" C/L, closed back, material: zinc alloy



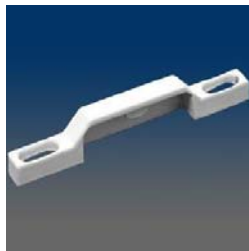
8422

Keeper, sash, surface mount, #6 screw, 2.22" C/L, open back, material: zinc alloy



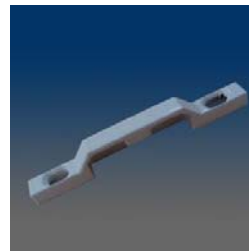
8421

Keeper, sash, face mount, #6 screw, 1" C/L, material: zinc alloy



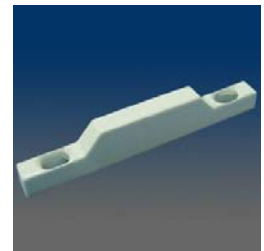
8420

Keeper, sash, surface mount and #8 screw, 2.205" C/L, closed back, material: zinc alloy



8411

Closed Back Face Mount Keeper, 2.062" C/L



8410

Keeper, sash, surface mount, #6 screw, 2.062" C/L, closed back, material: zinc alloy



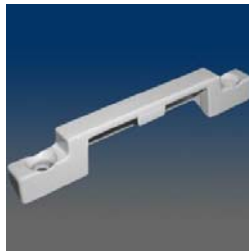
8388

keeper



8384

Keeper, sash, surface mount, #6 screw, elongated screw hole based on 8380, open back, match with 3390GK, material: zinc alloy, C/L 2.311"



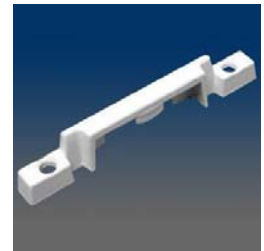
8382

Keeper, sash, surface mount, #8 screw, 2.25" C/L, closed back, beveled bottom, material: zinc alloy



8381

Keeper, sash, surface mount, #8 screw, 2.25" C/L, closed back, material: zinc alloy



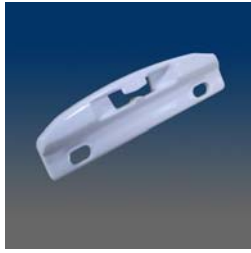
8380

Keeper, sash, surface mount, #6 screw, 2.25" C/L, open back, material: zinc alloy



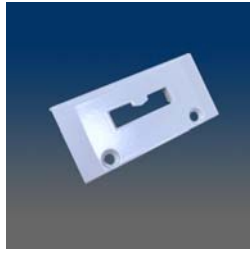
8372

Front Mounted keeper, 0.748" center to center, 0.291" tooth



8371

keeper



8334A

face mount keeper



8333

keeper



8332A

keeper



8300A

keeper



8299

Keeper, sash, face mount, #5 screw, .77" C/L, material: zinc alloy



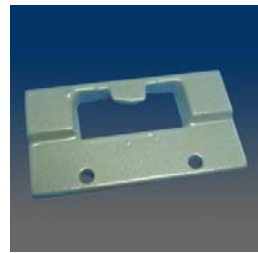
8297

Keeper with open back and with hook legs



8296

Keeper, sash, surface mount, #6 screw, 2.25" C/L, open back, material: zinc alloy



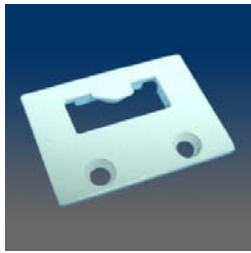
8295

Keeper, sash, face mount, #4 screw, 1" C/L, material: zinc alloy



8293

SASH KEEPER,FACE MOUNT,1.00" C/L,#6 SCREW(EURO WHITE)



8292

Keeper, sash, face mount, #8 screw, .866" C/L, material: zinc alloy



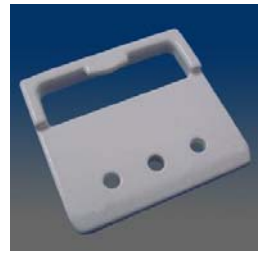
8291

Keeper, sash, surface mount, #5 screw, 2.22" C/L, open back, material: zinc alloy



8290

SASH KEEPER,FACE MOUNT,1" C/L,#4 SCREW



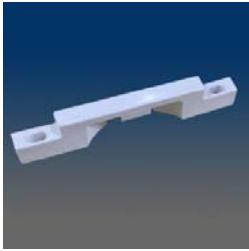
8289

Keeper, sash, face mount, #5 screw, .77" C/L, material: zinc alloy



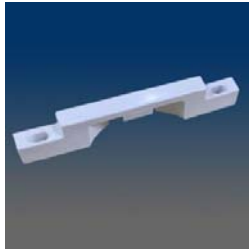
8288

Keeper, sash, surface mount,
#6 screw, 2.25" C/L, with pegs
at the bottom, open back,
material: zinc alloy



82871

Composite Keeper, compatible
with Lock 32801



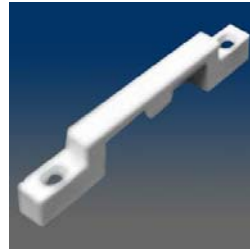
82871

Composite keeper, compatible
with lock 32801



82871

composite keeper



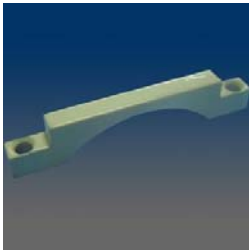
8287

Keeper, sash, surface mount,
#6 screw, 2.25" C/L, open back,
material: zinc alloy



8286

Face mount keeper, 2.25" C/L



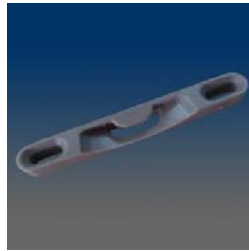
8285

Keeper, sash, surface mount,
#6 screw, 2.25" C/L, open back,
material: zinc alloy



8284

Keeper, sash, surface mount,
#6 screw, 2.25" C/L, closed
back, material: zinc alloy



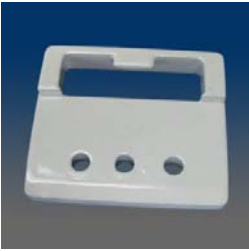
82831

Recessed Composite Keeper,
2.141" C/L



8283

Recessed keeper, 2.040" C/L



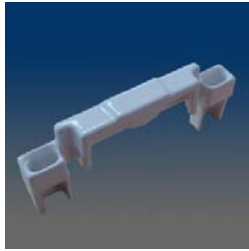
8281

Face mount keeper, #6 screw
used



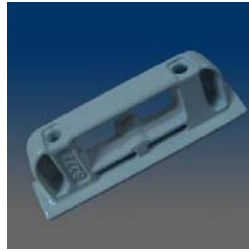
8280

Keeper, sash, surface mount,
#6 screw, 2.25" C/L, open back,
material: zinc alloy



8279

Face Mount Keeper, 1.378" C/L



8277

Face Mount Keeper, 1.378" C/L



8275

Recessed Keeper, 2.205" C/L



82741

Top mount keeper, 2.25" C/L,
0.375" thickness, closed back



82731A

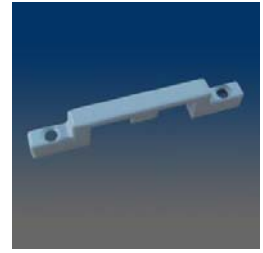


82731-SB



82731

Top mount keeper, 2.25" C/L,
0.285" thickness, closed back,



8272

Keeper with closed back



8271

Face mount keeper, 1.375" C/L



8268C

keeper



8268A

keeper, LPC, w/ pegs for
grooved profile



8268

top mount keeper, LPC style



8267

Face Mount Keeper, 1.181" C/L



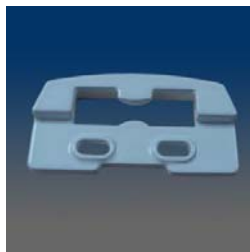
8266

Face Mount Keeper, 0.75" C/L



8264

Face mount keeper, 0.75" C/L,
match with 3263L&R lock



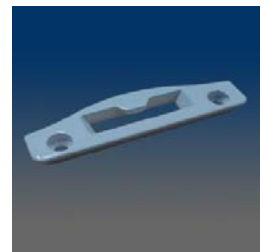
8263

Face mount keeper, 0.75" C/L,
match with 3262L&R lock



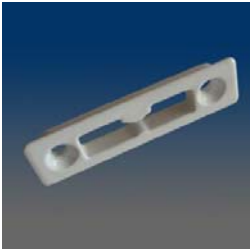
8262

Keeper, sash, surface mount,
#10 screw, 2.232" C/L,
material: zinc alloy



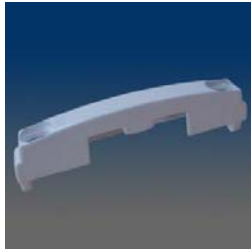
8261

Face mount keeper, 2.062" C/L,
match with 3261L&R, 3215
locks



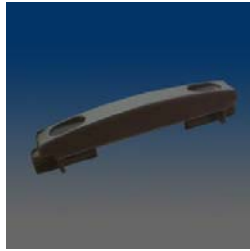
8256

Recessed facemount keeper that matches with 3271-L&R or 3273



8255

Keeper, surface mount, C/L 2.062, #6 screw used, matches with 3253A-L&R



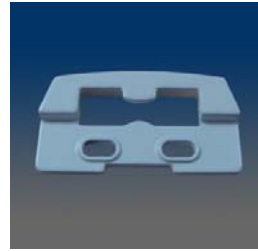
8254

Top mounted keeper that is a match with 3252-L&R



8253

Keeper, sash, face mount, zinc, match with 3253A-L&R lock



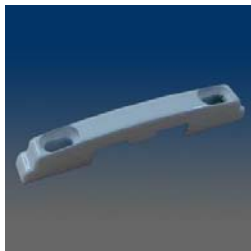
8252

Face mount keeper, .750" C/L, zinc, match with 3253L&R lock



8251

Top mount keeper, 1.875" C/L, zinc, match with 3252L&R lock



8250

Top Mount Keeper, 1.811" C/L



8243

Face Mount Impact Keeper, 1.575" C/L



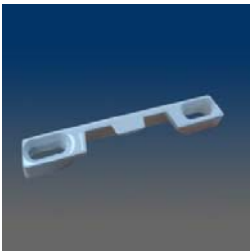
8239

Top Mount Keeper, 2.185" C/L



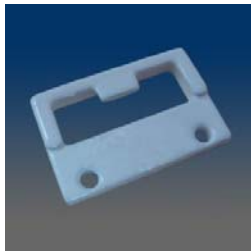
8238

Top Mount Open Back Keeper, 2.205" C/L



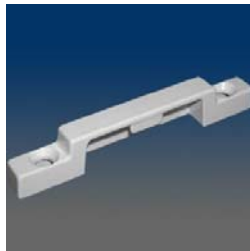
8232

Keeper with open back



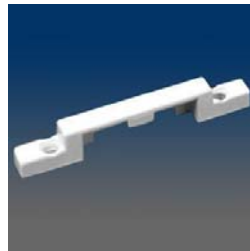
8231

Top mount keeper, 1.000" C/L



8229

Keeper, sash, surface mount, 2.11" C/L, closed back, material: zinc alloy



8227

Keeper, sash, surface mount, #6 screw, 2.062" C/L, open back, material: zinc alloy



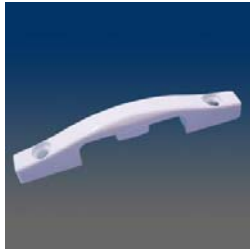
8226SL

Keeper, sash, surface mount, 2.169" C/L, open back, material: zinc alloy



8226

Keeper, sash, surface mount, #6 screw, 2.175" C/L, open back, match with 3226 / 3286 / 3296 locks, material: zinc alloy



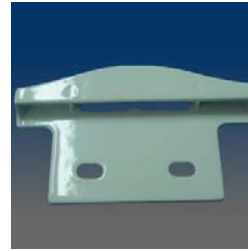
8224

Keeper, sash, surface mount, #6 screw, 2.062" C/L, match with 3621



8223

Keeper, sash, face mount, #6 screw, 1" C/L, match with 3621, material: zinc alloy



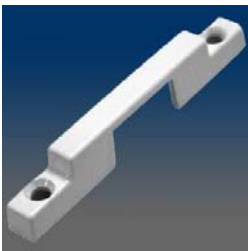
8222

Keeper, sash, face mount, #6 screw, 1" C/L, match with 3621, material: zinc alloy



8221

Keeper, sash, face mount, #6 screw, 1" C/L, match with 3621, material: zinc alloy



8220

Keeper, sash, surface mount, #6 screw, 2.213" C/L, open back, material: zinc alloy



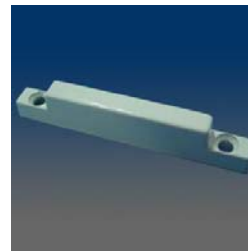
8219

Keeper, sash, surface mount, #6 screw, 2.062" C/L, open back, material: zinc alloy



8217

Top mount keeper, 2.062" C/L, open back



8216

Keeper, sash, surface mount, #6 screw, 2.062" C/L, closed back, material: zinc alloy



8214

Keeper, sash, face mount, #8 screw, 1" C/L, material: zinc alloy



8213

Keeper, sash, surface mount, #5 screw, 2.062" C/L, open back, material: zinc alloy



8212

Keeper, sash, surface mount, #8 screw, 2.091" C/L, open back, material: zinc alloy



8211

Keeper, sash, surface mount, #6 screw, 2.062" C/L, open back, material: zinc alloy



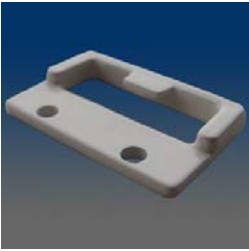
8210

Recessed Keeper 1.624" CL



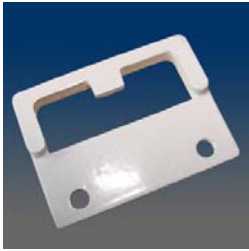
8209

Keeper, sash, face mount, #6 screw, 1.744" C/L, increased the thickness of 8208, material: zinc alloy



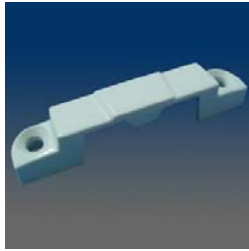
8208

Keeper, sash, face mount, #6 screw, .744" C/L, keep bottom pair of holes of 8202, material: zinc alloy



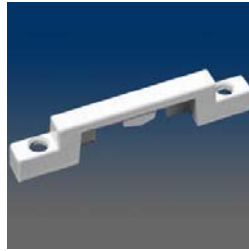
8207

Keeper, sash, face mount, #6 screw, 1" C/L, taller than 8202, and has different hole position, material: zinc alloy



8206

Keeper, sash, surface mount, #6 screw, 2.062" C/L, closed back, similar to 8201, material: zinc alloy



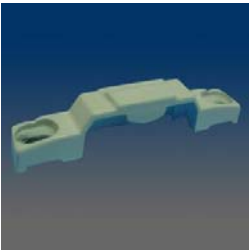
8205

Keeper, sash, surface mount, #6 screw, 2.062" C/L, open back, material: zinc alloy



8204

keeper



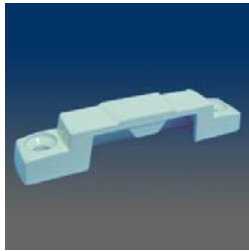
8203

Keeper, sash, surface mount, #6 screw, 2.062" C/L, closed back, material: zinc alloy



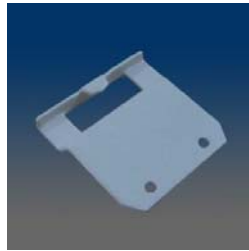
8202

Keeper, sash, face mount, #6 screw, 1" C/L, material: zinc alloy



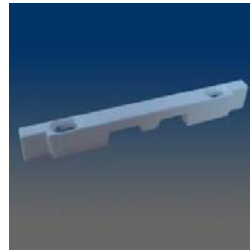
8201

Keeper, sash, surface mount, #6 screw, 2.062" C/L, match with 3212 lock, closed back, material: zinc alloy



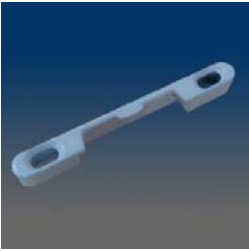
8200

Keeper, face mount, .85" C/L



8198

Recessed mounted keeper, 2.250" C/L, match with 3207, 3208 locks



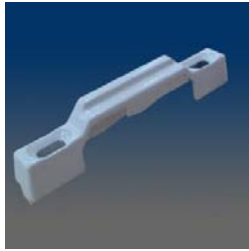
8197

Keeper, sash, recessed, 2.062" C/L, match with 3207, 3207PRM, 3207SMT, 3208, 3208PRM, 3208SMT



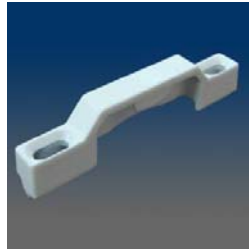
8196

Top mount keeper, 2.250" C/L, closed back, slotted holes match with 3207, 3208 locks



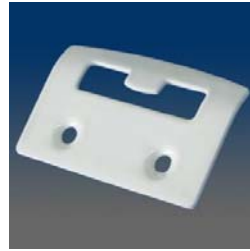
8195

Top mount keeper, 2.062" C/L, closed back, slotted holes & pronged, match with 617 lock



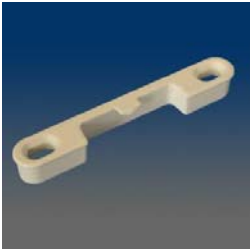
8194

Top mount keeper, 2.062" C/L, closed back & slotted holes match with 616 lock



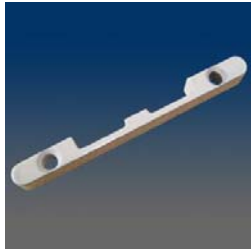
8188

Keeper, face mount, 1.000" C/L, wall thickness of 0.06", stainless steel, powder coated, similar with 8184, match with 92205 lock



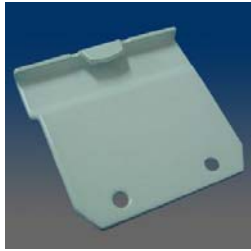
8187

Keeper, face mount, 2.244" C/L, match with 9812, material: zinc alloy



8186

Keeper, sash, face mount, #6 screw, 2.000" C/L, with same appearance as 8183 but has round holes, material: zinc alloy



8185

Keeper, face mount, .85" C/L, rounded holes, material SS304



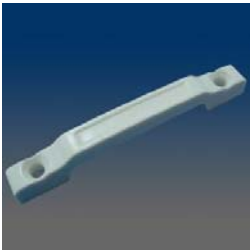
8184

Keeper, face mount, .846" C/L, rounded holes, material SS304



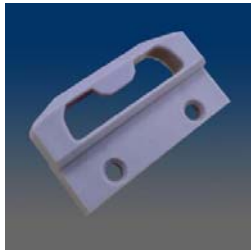
8183

Keeper, sash, face mount, #6 screw, 2.062" C/L, slotted holes, match with 3161 lock, material: zinc alloy

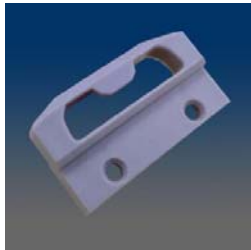


81811

Composite sash keeper, surface mount, 2.25" C/L, rounded holes, match with 31811 lock



81802A



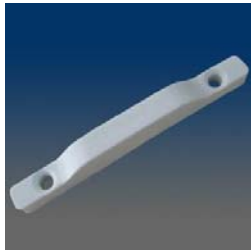
81801

Face mount keeper, 1.004 C/L, round holes, match with 92271A and 9229



4541

Composite keeper used with 4323 and 3422.

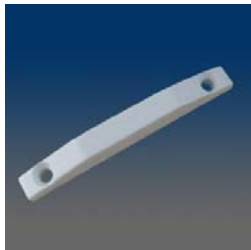


4530

Composite keeper, 2.062" C/L, rounded holes, surface mount, match with 4310, 4320 locks

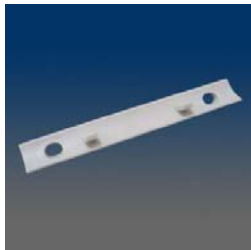


4524



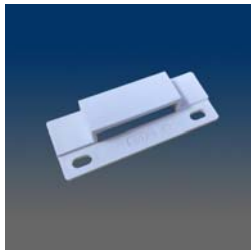
4520

Top mount keeper, 2.062" C/L, closed back



1511

NYLON KEEPER SKIRT



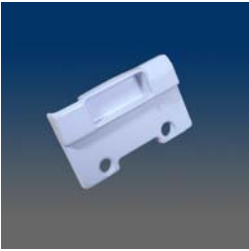
1473-SB

keeper shim



13034

Centerline 1.399

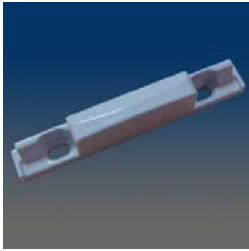


13033A

auto keeper



13033



13032

Keeper that works automatic
lock 12032



13013

Keeper of automatic lock
12013, surface mount, 2.062"
C/L, #6 screw