

LOCKS



CONCEPT 2259

automatic lock



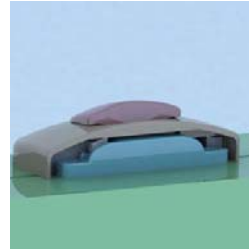
CONCEPT 2036

automatic lock



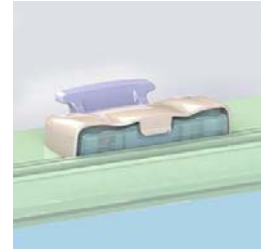
CONCEPT 12023

automatic lock



CONCEPT 12021

automatic lock



CONCEPT 12016

automatic lock



9831

Face Mount Lock, 2.17" C/L



9830

Flush Mount Lock, 1.875" C/L, .575" set back



9828

Sash lock, flush mount, 1.68" C/L, 0.575" set back, #8 screw, w/ beveled cam



9826

Sash lock, flush mount, 1.68" C/L, .575" set back, #8 screw, recessed, with straight handle



9825

Sash lock, flush mount, 1.68" C/L, .575" set back, #6 screw, similar to 9821 but without the lip protruding portion of housing



9824A

face mount lock



9824

Sash lock, face mount, 2.17" C/L, #8 screw



9823

Sash lock, flush mount, 1.68" C/L, .575" set back, #10 screw



9822

Sash lock, flush mount, 1.68" C/L, .575" set back, #8 screw



9821

Sash lock, flush mount, 1.68" C/L, .575" set back, #8 screw, recessed



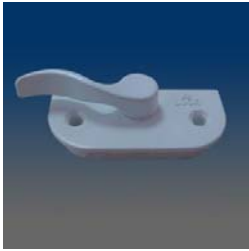
9820

Sash lock, flush mount, 1.68" C/L, .575" set back, #8 screw, different lever from 9821



98183

snap-in lock



98181B-LR

Hybrid sash lock, flush mount



9818-LR

Flush Mount Lock, 1.875" C/L, .571" setback, handed



9817S

Sash lock, flush mount, 1.63" C/L, .39" setback, #8 screw, with small cam



9817

Sash lock, flush mount, 1.63" C/L, .39" setback, #8 screw, regular cam 9810-03



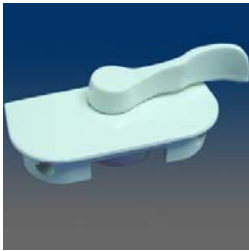
9812

Sash lock, flush mount, 1.63" C/L, .630" setback, #8 screw, match w/ 8187 keeper



9811

Sash lock, flush mount, 1.73" C/L front hole, #8 screw



9810

Sash lock, flush mount, 1.75" C/L front hole, #6 screw



97301.005

Sash lock, surface mount, 2.062" C/L, .688" set back, #6 screw



9730

Sash lock, surface mount, 2.25" C/L, .39" set back, #6 screw, match with 9330



9723HV

sash lock



9722

Sash lock, surface mount



9721

Sash lock, surface mount, 2.062" C/L, .688" set back, #6 screw, low profile, non hooded, straight handle, match with 9313



9720

Sash Lock



9712

sash lock



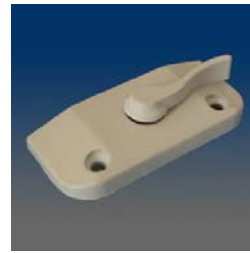
9711

sash lock



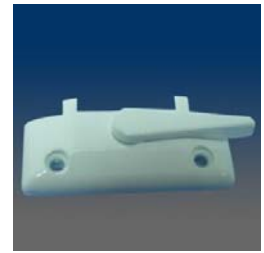
9710

Sash lock, surface mount,
2.062" C/L, .438" set back, #6
screw, low profile, hooded



9706

Sash lock, surface mount,
1.875" C/L, .688" set back,
hooded, low profile, match with
9319 & 9395



9485-LR

Sash lock, surface mount,
1.875" C/L, .688" set back, #6
screw, nesting nib, handed



9420

Sash lock, surface mount,
2.062" C/L, .688" set back, #6
screw, nesting nib



9418

Sash lock, surface mount,
2.062" C/L, .438" set back, #6
screw, nesting nib, extended
reach cam



9410

Sash lock, surface mount,
2.062" C/L, .438" set back, #6
screw, nesting nib



9286CG

Sash Lock w/ pad printed logo.



9286B

sash lock



9286

Sash lock, surface mount, 2.25"
C/L, .438" set back, #6 screw,
match with 9387 keeper



9280

Sash lock, surface mount, 2.25"
C/L, .438 set back, #6 screw,
marked with LOCKED and
UNLOCKED indicator



9228

Sash lock, surface mount,
2.062" C/L, .688" set back, #6
screw, extended reach cam



92271

Composite Lock, 2.25" C/L,
.428" setback



9227

Sash lock, surface mount,
2.062" C/L, .688" set back, #8
screw used



9220

Sash lock, surface mount, 2.062" C/L, .688" set back, #8 screw, match with 9381 keeper



9218

Sash lock, surface mount, 2.062" C/L, .438" set back, #6 screw, extended reach cam



9217

Sash lock, surface mount, 2.062" C/L, .438" set back, #8 screw



9216

sash lock



9210

Sash lock, surface mount, 2.062" C/L, .438" set back, #6 screw, match with 9381 keeper



9206SB

SASH LOCK,SURFACE MOUNT,1.88 C/L, .688 set back,push button handle release



9206R.WH.BLUE

Keeper



9205SB

Sash lock, surface mount, 1.88" C/L, .688" set back, #6 screw, square housing, metal push button handle release



9205RB-REY

Sash lock, surface mount, 1.88" C/L, .688" set back, #6 screw, half round housing, metal push button handle release, with engraved logo of "REYNOLDS"



9205R

Sash lock, surface mount, 1.88" C/L, .688" set back, #8 screw, half round housing



690LH

Sash lock, left, surface mount, 2.25" C/L, .838" set back, #6 screw, FER= Forced Entry Resistance, left handed



690

Sash lock, surface mount, 2.25" C/L, .838" set back, #6 screw, FER= Forced Entry Resistance, right handed



686

FER lock



685-LH

FER lock



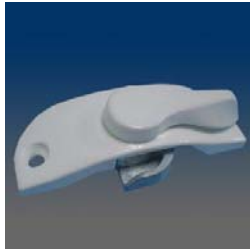
684-LR

Zinc FER Sash Lock. Hole spacing at 2.062" c/c offset .688".



683

Sash lock, surface mount, 2.25" C/L, .39" set back, #8 screw, non-hooded, FER compliant, 600 series, FER= Forced Entry Resistance



681

Sash lock, surface mount, 2.25" C/L, .39" set back, #8 screw, non-hooded, FER compliant, 600 series, FER= Forced Entry Resistance



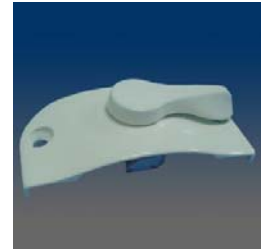
680LH

Sash lock, left hand, surface mount, 2.25" C/L, .39" set back, #8 screw, hooded, FER compliant, 600 series, FER= Forced Entry Resistance



680DJ-L

680 with pad logo "Danjo", FER= Forced Entry Resistance, left handed



680

Sash lock, surface mount, 2.25" C/L, .39" set back, #8 screw, hooded, FER compliant, 600 series, FER= Forced Entry Resistance, right handed



672

Sash lock, surface mount, w/ slim handle, 2.062" C/L, .562" set back, Housing material: PA6+30%GF Hybrid FER compliant, 600 series, FER= Forced Entry Resistance



671

Sash lock, FER compliant, 600 series, FER= Forced Entry Resistance



670C

Hybrid sash lock



670B

Sash lock, surface mount, housing with locator pins, FER= Forced Entry Resistance compliant



660

Plastic FER loc



643

LPI FER Lock works with 8594 Keeper



642

LPI FER Lock works with 8594 Keeper



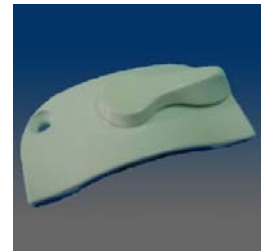
621LH

Sash lock, surface mount, 2.062" C/L, .688" set back, #8 screw, non-hooded, FER compliant, 600 series, left-handed of 621, FER= Forced Entry Resistance



621

SASH LOCK,SURFACE MOUNT,2.062" C/L,0.688" SET BACK,#8 SCREW, NON-HOODED,FER COMPLIANT,600 SERIES, RIGHT HANDED



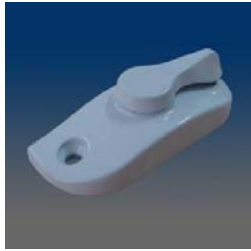
620

Sash lock, surface mount, 2.062" C/L, .688" set back, #8 screw, hooded, FER compliant, 600 series, FER= Forced Entry Resistance



619

Impact Top Mount Lock, FER compliant, 2.062" C/L 0.911" set back



618

Sash Lock



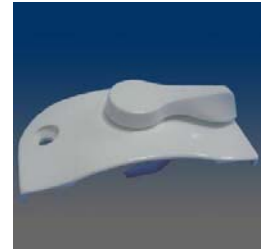
611SL

Sash lock, surface mount, 2.062" C/L, .438" set back, #8 screw, non-hooded, FER compliant, with an open in housing back that can show lock or open position, 600 series, FER= Forced Entry Resistance



611

Sash lock, surface mount, 2.062" C/L, .438" set back, #8 screw, non-hooded, FER compliant, 600 series, FER= Forced Entry Resistance, available in left and right handed



610

Sash lock, surface mount, 2.062" C/L, .438" set back, #8 screw, hooded, FER compliant, 600 series, FER= Forced Entry Resistance



606NDX

Sash lock, surface mount, 1.875" C/L, .688" set back, #8 screw, non-hooded, FER compliant, 600 series, FER= Forced Entry Resistance, 606 with logo "NORANDEX"



606

Sash lock, surface mount, 1.875" C/L, .688" set back, #8 screw, non-hooded, FER compliant, 600 series, FER= Forced Entry Resistance



605

Sash lock, surface mount, 1.875" C/L, .688" set back, #8 screw, hooded, FER compliant, 600 series, FER= Forced Entry Resistance



4622

Composite Top Mount FER sweep lock, 2.062" C/L, .688" set back



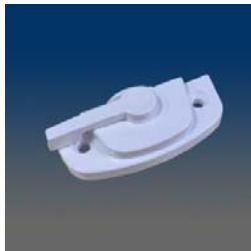
4430

Top Mount Lock, round housing, base plate installation



4420

Sash lock, surface mount, round housing, 1.875" C/L, .688" set back, #8 screw, zinc, match with 9340



4323

Composite Sash lock. Installation holes offset .438" with 2.062" C/C.



4322

Composite Sash Lock. Installation holes offset .688" with 2.062" C/C



4321B

composite sash lock



4321A



4320

Composite sash lock, surface mount, round housing, 2.062" C/L, .688" set back, #6 screw



4310WV

Composite sash lock, surface mount, round housing, 2.062" C/L, .438" set back, #6 screw, same as 4310 but with WV pad logo



4310

Composite Sash Lock, round housing, 2.062" * 0.438" (941014)



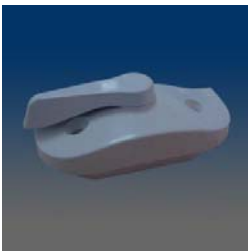
4220

Composite sash lock, surface mount, square housing, 2.062" C/L, .688" set back, #6 screw



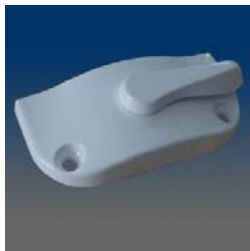
4210

Composite Sash Lock, square housing, 2.062" * 0.438"



36702B

Hybrid recessed GT sash lock



3622

Sash lock, surface mount, 2.062" C/L, .688" set back, #8 screw, regular cam, hooded, match with 9339, strength version of 3620



3621

Sash lock, surface mount, 2.062" C/L, .688" set back, #8 screw, regular cam, same appearance as 621



3620

Sash lock, surface mount, 2.062" C/L, .688" set back, #8 screw, regular cam, match with 9337, same appearance as 620, hooded



360-LR

integrated lock



3522S

Sash lock, surface mount, 2.062" C/L, .688" set back, #6 screw, 3 degree nib, marked with LOCKED indicator, with small cam



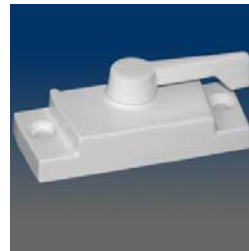
3522

Sash lock, surface mount, 2.062" C/L, .688" set back, #6 screw, straight nib, marked with LOCKED indicator



3515TW

Sash lock, surface mount, 2.062" C/L, .438" setback, #6 screw, metal push button handle release like 9205, with logo of "TAYLORS WINDOW"



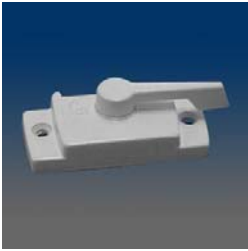
3514S

Sash lock, surface mount, 2.062" C/L, .438" setback, #8 screw, small cam



3514

Sash lock, surface mount, 2.062" C/L, .438" setback, #8 screw



3513

Sash lock, surface mount, 2.062" C/L, .438 setback, #6 screw, straight nib, marked with LOCKED indicator



3512UVW

Sash lock, surface mount, 2.062" C/L, .438 set back, #6 screw, straight nib, marked with LOCKED indicator, 3512 with pad two-color logo "ULTRA-VIEW WINDOWS"



3512HV

Sash lock, surface mount, 2.062" C/L, .438 set back, #6 screw, straight nib, marked with LOCKED indicator, 3512 with pad logo "Home Visions"



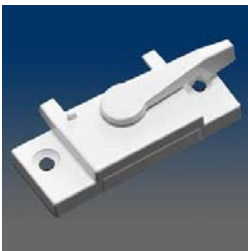
3512

Sash lock, surface mount, 2.062" C/L, .438 setback, #6 screw, straight nib, marked with LOCKED indicator



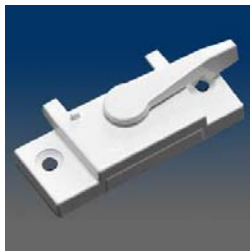
3505

Sash lock, surface mount, 1.875 C/L, .688" setback, #6 screw, straight nib, marked with LOCKED indicator



3488

Sash lock, surface mount, 2.25" C/L, .39" setback, #8 screw, nesting nib, flat handle design, extended reach cam



3480

Sash lock, surface mount, 2.25" C/L, .396" setback, #8 screw, nesting nib, flat handle design



3424

Sash lock, surface mount, 1.875" C/L, .688" setback, #6 screw, nesting nib



3420

Sash lock, surface mount, 2.062" C/L, .688" setback, #6 screw, nesting nib, flat handle design



3418

Sash lock, 2.062" C/L, .438" setback, #8 screw, nesting nib, flat handle design, extended reach cam



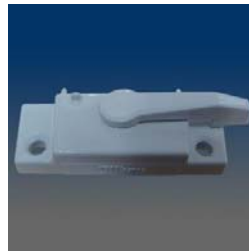
3410

Sash lock, surface mount, 2.062" C/L, .438" setback, #6 screw, nesting nib, flat handle design



3391

Sash lock, surface mount, 2.156" C/L, .72" setback, #10 screw. Operating instructions casted in embossed letters on handle.



3390GK

Sash lock, surface mount, 2.156" C/L, .72" setback, #10 screw, straight nib, flat handle design, with engraved logo "Gilkey" on 3390



3390

Sash lock, surface mount, 2.156" C/L, .72" setback, #10 screw, straight nib, flat handle design



3380

Sash lock, surface mount, 2.25" C/L, .39" setback, #8 screw, straight nib, flat handle design



33650-LR

Impact Sash Lock for Lock/Latch Combo, LPC shape, 2.055" C/L, .688" setback, with 2pcs flat head self tapping screw 10135(#8*0.75"), zinc, match with 7130-L&R tilt latch and 8268-1keeper and 5253-1 block to consist of lock tilt WOCD combo for vinyl windows



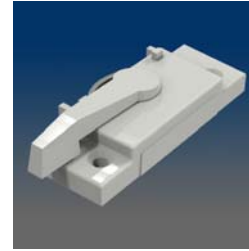
3340-LR

Sash Lock for Lock/Latch Combo, GT style, 2.062" C/L, .63" setback, zinc, left, match with 7121-L tilt latch and 9356A keeper for vinyl window.



33301-LR

Hybrid sash lock, surface mount, 2.062" C/L, .562" setback, #8 screw



3320

Cam Lock,
Centerline 2.062,
Setback 0.688



3312-L/R

integrated lock-L/R



3310A-LR

Sash Lock for Lock/Latch Combo, LPC shape, 2.062" C/L, .688" setback, #8 screw 10137x2pcs, zinc, right, match with 7106-L tilt latch and 8332-1 keeper to consist of lock tilt combo for vinyl windows, for low profile



3310-LR

Sash Lock for Lock/Latch Combo, LPC shape, 2.062" C/L, .688" setback, #8 screw 10137x2pcs, zinc, right, match with 7100HL tilt latch and 8330-1 keeper to consist of lock tilt combo for vinyl windows, for low profile



32981

Composite sash lock, 2.188" C/L, .73" setback, #12 screw, with glossy finish



3296

Sash lock, surface mount, 2.043" C/L, .688" setback, #8 screw



3290

Sash lock, surface mount, 2.157" C/L, .72" setback, #10 screw, easy-to-read engraved OPEN and LOCK labels



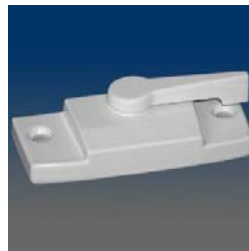
3289

Sash lock, surface mount, 2.25" C/L, .39" setback, #8 screw, extended reach cam



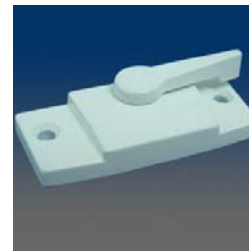
3288

Sash lock, surface mount, 2.25" C/L, .39" setback, #8 screw, extended reach cam



3287

SASH LOCK,SURFACE MOUNT,2.250" C/L,0.438" SET BACK,#8 SCREW,SMALL CAM(EURO WHITE)



3286



3285B

Sash Lock, Surface Mount, LPC shape, 2.062" CL, .688" setback, #6 screw, custom cam



3285A

Sash Lock, Surface Mount
LPC shape, 2.062" CL, .688"
setback, #6 screw



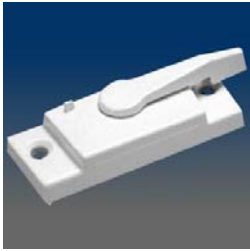
32851

hybrid sash lock



32801

Composite sash lock, zinc cam,
non-powder coated version



3280

SASH LOCK,SURFACE
MOUNT,2.220" C/L,0.390" SET
BACK,#10 SCREW(BLUE WHITE)



3276-LR

semi-recessed LPC lock for lock
/ tilt combo, handed



32740-LR

integrated sash lock



3272-LR

Sash Lock for Lock/Latch
Combo, recessed, 1.875" C/L,
.387" setback, #6 screw
10018*2pcs, zinc, left, can be
used on wood windows, match
with 7111-1 tilt latch and
8277-1 keeper



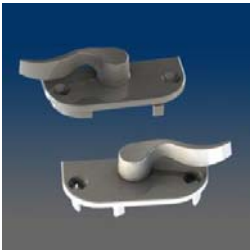
3271-LR

Sash Lock for Lock/Latch
Combo, recessed, handed



32701-LR

Sash Lock for Lock/Latch
Combo, recessed,1.875" CL,
0.562" setback



3270-LR

Sash Lock for Lock/Latch
Combo, recessed,1.875" CL,
0.562" setback



3269-LR

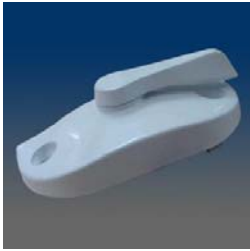
Sash Lock for Lock/Latch
Combo, GT style lock, 2.062"
C/L, .500" setback, zinc, handed



3267B-LR



3266A-LR



3263B-LR

Sash Lock for Lock/Latch
Combo, GT shape, same as
3263 but with a longer lever but
shorter than 3263A lever,
2.062" C/L, .53" setback, #6
screw 10137 2pcs, zinc, left,
match with 7100L tilt latch to
consist of Lock/Latch Combo for
vinyl windows, the matched
keeper is 9353.



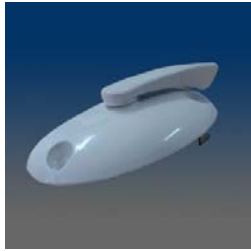
3263A-LR

Sash Lock for Lock/Latch
Combo, GT shape, handed



3263-LR

Sash Lock for Lock/Latch Combo, GT shape, handed



3262-LR

Sash Lock for Lock/Latch Combo, egg shape



3261B-LR

Sash Lock for Lock/Latch Combo, 2.062" C/L, .755" setback



3261A-LR

Sash Lock for Lock/Latch Combo, 2.062" C/L, .755" setback



3261-LR

Sash Lock for Lock/Latch Combo, 2.062" C/L, .755" setback, zinc, left, work with 7100L and 8261-1 to consist of Lock/Latch Combo, vinyl window, use screw 10108



3260-LR

Sash Lock for Lock/Latch Combo, egg shape, 2.062" C/L, .39" setback, #8 screw, zinc, left, can be used on wood windows, match with 7110 tilt latch and 8260 keeper



3254

Sash Lock for single lock tilt, retro shape, 2.062" C/L, .39" setback, #6 screw 10137x2pcs, zinc, work with 7140 and 8251 on wood windows



3253B-L

Sash Lock for Lock/Latch Combo, retro shape, 2.062" C/L, .53" setback, zinc, left, work with 7100H-L and 8331-1 to consist of Lock/Latch Combo for vinyl windows



3253A

Sash Lock for Lock/Latch Combo, works with 7110 tilt latch and 8251 keeper for wood windows



3253

Sash Lock for Lock/Latch Combo, works with 7101 tilt latch for vinyl windows



3252

Sash Lock for Lock/Latch Combo, works with 7110 tilt latch and 8251 for wood windows



3251-LR

Sash Lock for Lock/Latch Combo, retro shape, 2.062" C/L, .39" setback, #8 screw, zinc, left, work with 7100L and 8250 to consist of Lock/Latch Combo for vinyl window



3250-LR

Sash Lock for Lock/Latch Combo, retro shape, 2.062" C/L, .39" setback, #8 screw, zinc, left, work with 7110 and 8250 to consist of Lock/Latch Combo for wood window



3242-LR

Screwless Lock for Lock/Latch Combo, egg shape, zinc, left, work with 7100A-L and 8242 to consist of Lock/Latch Combo for vinyl window



3241-LR

Screwless Lock for Lock/Latch Combo, retro shape, zinc, left, work with 7100L and 8241/9394 to consist of Lock/Latch Combo, vinyl window



3239

Sash Lock, surface mount, 2.248" C/L, 0.386" setback. Match with 8239 keeper



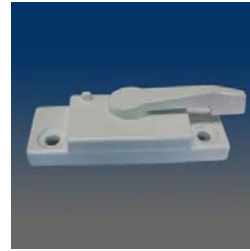
3238

Sash Lock, surface mount, 2.062" C/L, 0.433" setback. Match with 8238 keeper



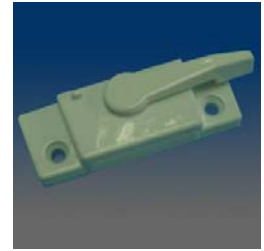
3237

Sash Lock, work with 8253 keeper



3229

Sash lock, surface mount



3228

Sash lock, surface mount, 2.062" C/L, .688" setback, #6 screw, flat handle design, extended reach cam



3227

Sash lock, surface mount, 2.062" C/L, .688" setback, #6 screw



3226SL

Sash lock, surface mount, 2.062" C/L, .688" setback, #8 screw



32263

Composite Sash Lock, plastic version of 3226SL, 2.062" C/L, .688" setback, housing, handle and cam are made of plastic, match with 8226SL



3226

Sash lock, surface mount, 2.062" C/L, .688" setback, #6 screw, match with 8226 keeper



3225DB

Sash lock, surface mount, 1.875" C/L, .688" setback, #6 screw, snap-back lock, unique spring design eliminates exposing the cam in the partially open position



3225

Sash lock, surface mount, 1.875" C/L, .688" setback, #6 screw, snap-back lock, unique spring design eliminates exposing the cam in the partially open position



3222SK

Sash lock, surface mount, 2.062" C/L, .688" setback, #6 screw, flat handle design



3222

Sash lock, surface mount, 2.062" C/L, .688" setback, #6 screw



3221S

Sash lock, surface mount, 2.062" C/L, .688" setback, #6 screw, flat handle design, small cam of FS202



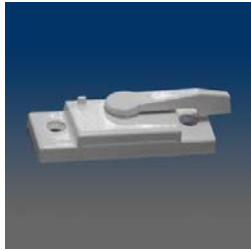
3220

Sash lock, surface mount, 2.062" C/L, .688" setback, #6 screw



3219

Sash Lock, GT shape, standard version of 3263A, 2.062" C/L, .53" setback



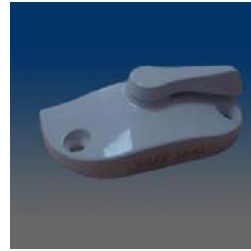
3218

Sash lock, surface mount, 2.062" C/L, .438" setback, #6 screw, flat handle design, extended reach cam



3215ST

Sash lock, 3215 with pad logo "STORM TIGHT"



3215SS

Sash lock, 3215 with pad logo "SAFE SEAL"



3215NS

GT style sash lock w/logo



3215HS

Sash lock, 3215 with pad logo "HOMESPIRE" Sash lock, 3215 with pad logo "HOMESPIRE"



3214

Sash lock, surface mount, 2" C/L, .465" setback, #8 screw, match with 8526 sash keeper



3213

Sash lock, surface mount, 2.062" C/L, .438" setback, #6 screw, marked with LOCKED indicator



3211

Sash lock, surface mount, 2.062" C/L, .438" setback, #8 screw, snap-back lock, unique spring design eliminates exposing the cam in the partially open position



3210S

Sash lock, surface mount, 2.062" C/L, .438" setback, .197" throw, #6 screw, flat handle design, small cam



3206SK

Sash lock, surface mount, 1.875" C/L, .688" setback, #6 screw, step on housing



3206CRD

Sash lock, surface mount, 1.875" C/L, .688" setback, #6 screw, step on housing



3205

SASH LOCK.SURFACE MOUNT,1.875" C/L,0.688" SET BACK,#6 SCREW WITH INDICATOR



3204-LR

sash lock



3199

Sweep lock, 2.25" C/L, .46" throw, #6 screw, .39" setback



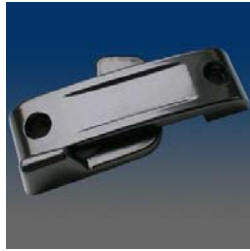
3198TR

Sweep lock, 3198 with pad marking "Traco"



3198

Sweep lock, 2.25" C/L, .37" throw, #6 screw, .39" setback



3196

Sweep lock, 2.25" C/L, .49" throw, #8 screw, .40" setback



3193

Sweep lock, 2.25" C/L, .37" throw, #10 screw, .40" setback



3192PGT

Sweep lock



31911

Composite sweep lock, round housing, match with 4540, with glossy finish



31901

Sweep Sash Lock



3185

Sweep Lock



31821

Composite sweep lock, 2.25" C/L, .47" throw, .43" setback, extended tongue, with glossy finish, round housing



31811

Composite sweep lock, 2.25" C/L, .39" throw, .37" setback, special narrow housing, with glossy finish



3180HV

sweep lock w/ logo



31806

Composite sweep lock, 2.25" C/L, .41" throw, .43" setback, thicker squared housing, with glossy finish



3179HV

hybrid sweep lock w/ logo



317762



31775





31774

Composite sweep lock, 2.25" C/L, .45" throw, #10 screw, .43" setback, round housing, tongue with nibs, with glossy finish



31771

Composite sweep lock, 2.25" C/L, .48" throw, #10 screw, .39" setback, round housing, tongue without nibs, with glossy finish



3172HM

Sweep lock, 2.25" C/L, .47" beveled throw, #8 screw, .39" setback, with engraved logo



31721

Composite sweep lock, 2.25" C/L, .41" beveled throw, #8 screw, .39" setback, round housing, tongue without nibs, with glossy finish



3170GK

Sweep lock, 2.244" C/L, .50" throw, #8 screw, .39" setback, with pad logo "GALKOS"



31705



31701



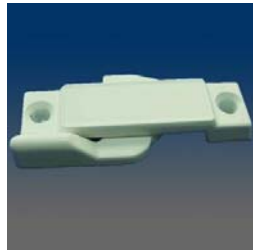
3170

Sweep lock, 2.244" C/L, .50" throw, #8 screw, .39" setback



3169

Sweep lock, 2.244" C/L, .395" setback



3164

Sweep lock, 2.244" C/L, .34" beveled throw, #8 screw, .39" setback



3163JD

Sweep lock, 2.25" C/L, .38" throw, #10 screw, .38" setback, with molded logo "Jordan"



31626



31625



31625



31624BF

Composite sweep lock, 2.25" C/L, .31" beveled throw, #6 screw, .43" setback, round housing with "BFS" logo, tongue with nibs, with glossy finish



31621BF





31621

Composite sweep lock, 2.25" C/L, .31" beveled throw, #6 screw, .43" setback, round housing, tongue without nibs, with glossy finish



3162

Sweep lock, 2.25" C/L, .38" beveled throw, #6 screw, .39" setback



31616

Composite sweep lock, .35" throw, squared housing, tongue with nibs, with glossy finish



31614



3161

Sweep lock, 2.25" C/L, .4" throw, #8 screw, .39" setback



31606

Composite sweep lock, 2.25" C/L, .36" throw, .43" setback, squared housing, tongue without nibs, with glossy finish, with ribs on the lever



31605



31601

Composite sweep lock, 2.25" C/L, .34" throw, #8 screw, .43" setback, round housing, tongue without nibs, with glossy finish



3160

Sweep lock, 2.25" C/L, .38" throw, .39" setback, tongue length .38", #8 screw used



3159

Sweep lock, 2.25" C/L, .26" throw, #8 screw, .39" setback, tongue height -0.423"



3151

Sweep lock, 2.25" C/L, .26" throw, #8 screw, .39" setback, tongue height .055"



3143

Sweep lock, 1.87" C/L, .28" throw, #8 screw, .31" setback



3001

Small sash lock, .94" C/L, plated with white zinc



1551

Sweep lock spacer, steel, yellow chromated



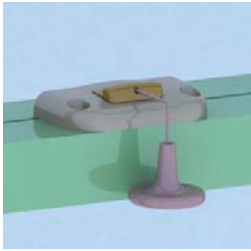
13030

keeper for 12030



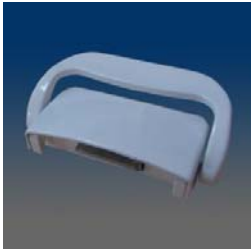
12040A

Easy access lock, face mount, based on 12017 w/ bigger handle, added string and pull button, matching keepers, w/ .605 pull tab color

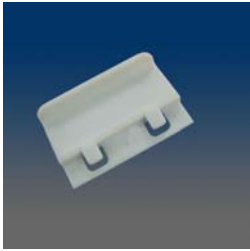


12040

Easy access lock, face mount, based on 12017 w/ bigger handle, added string and pull button, .005 pull tab color

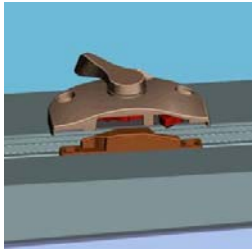


12032

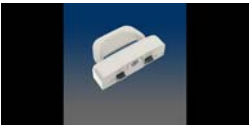


12030

auto lock



12029



12025

automatic sash lock



12017A

Automatic Lock,
Centerline 2.063,
Set Back 0.675.



12017



12013



12012

automatic lock