



Aribell
The Leader in Door & Window Components

Aribell Products Limited
380 Four Valley Drive
Vaughan ON L4K 5Z1
Tel: 905.669.5001 Fax: 905.669.5030
www.aribell.ca

CASEMENT



CONCEPT 3905 T HANDLE

Casement operator T handle



CONCEPT 3905 OPERATOR COVER

Casement operator cover



CONCEPT 3553

Tie Bar Keeper



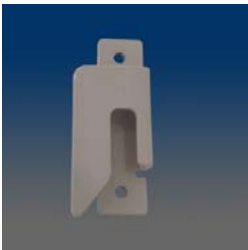
CONCEPT 3351

Heavy Duty Casement Hinge



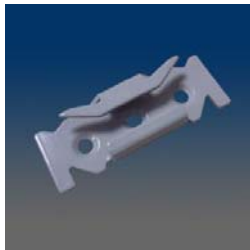
81935S

Awning Keeper



81305-L/R

Tie Bar Keeper



81304

Tie bar keeper for limited travel system.



81302



31440

Tie Bar Guide



31439

Tie Bar Guide.



20135

Operator backing support plate.



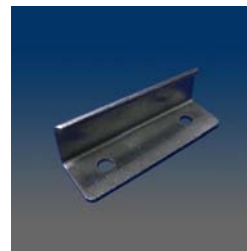
20134

Operator backing support plate.



20132

Lock Support Plate



20106SS

Casement snubber, stainless steel



18302-276

27.6" tie bar for 18300 limited travel casement system.



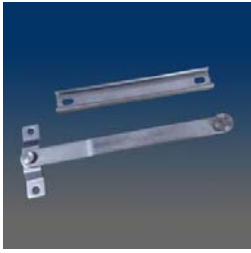
18301-L/R

Limited Travel casement locking handle cover. Product is handing specific.



1830-L/R

Limited travel casement locking handle w/ WOCD.



1821

Casement limit stop



1820

Limit stop, casement



1800-LR

Casement Window Opening Control Device (WOCD) Pat. Pending



1688B

Single Point Locking Handle



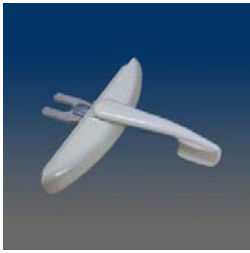
1688A

Multi-Point Locking Handle



16881B

Casement single point locking handle.



16881A

Casement locking handle.



1681-03F

Tie bar guide.



1681-03D

Tie bar guide



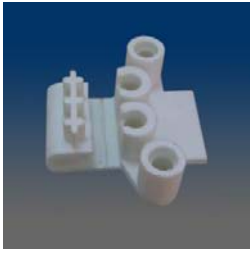
1681-03C

Tie Bar Guide



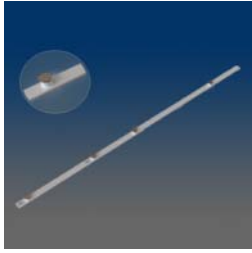
1681-03B

Tie bar guide



1681-03

Casement Tie Bar Guide



1677XXB

Casement tie bar with cam rollers. Available in various sizes from 14.9" to 70.9".



1677XXXA

Tie bar guide with cone style rollers. Available in various sizes from 14.9in to 70.9in.



1677269A

Tie Bar 26.9"



1676-R

Tie Bar Keeper - Right



1676-L

Tie Bar Keeper - Left



1671-72-R

Operator Cover & Handle



1671-72-L

Operator Cover & Handle



1670

Operator Handle.



16632SS

Snubber, Stainless steel



16632

Snubber



16631SS

Snubber, narrow version of 1663



1663

Snubber



16541SS

Scissor awning operator made with stainless steel arms and internals, fitting for coastal applications. Used with 16313SS awning track.



16541

Awning Operator



16540SS

Narrow Awning operator. Awning track not needed.



16540

Awning Operator



1653SS-R

Dyad operator made with stainless steel arms and internals.



1653-R

Dyad Operator - Right



1653-L

Dyad Operator - Left



16520SS-L

Dual arm operator with stainless steel arms and internals. Used with 16310 casement track.



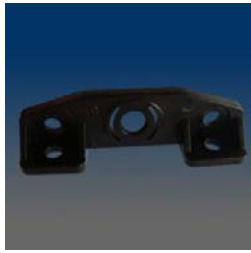
16520-R

Dual Arm Casement Operator - Right



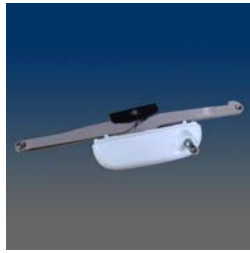
16520-L

Dual Arm Casement Operator- Left



16440-07

Connecting plate for operator base



16440

awning operator base



16431SS-R

Dyad casement operator with integrated cover. Arms and internals made with stainless steel, fitting for coastal applications.



16431-R

Dyad casement operator with integrated cover.



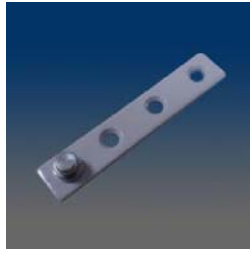
16313SS

Operator Track



16310

Track



16212

Stud bracket



16211-R

Stud bracket, right handed



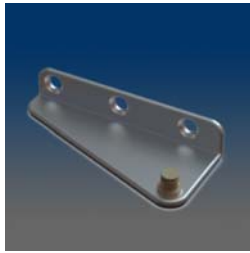
16211-L

Stud bracket, left handed.



16210SS-R

Stud bracket in SS material, Right handed.



16210SS-L

Stud Bracket in SS material, left handing.



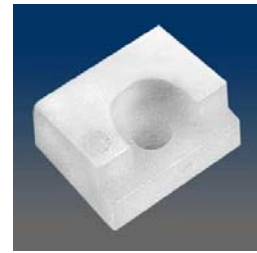
16210-R

Stud Bracket- Right



16210-L

Stud Bracket - Left



1610

Ramp Block



16026P-R

26in awning hinge with coated arms and track. Right handed.



16026P-L

26in Awning hinge, coated arms and track, left handed.



16026-R

26in awning hinge, coated arms with stainless steel track. Right hand.



16026-L

26in awning hinge with coated arms and stainless steel track. Left handed.



16022P-R

22in awning hinge with coated arms and coated track. Right handed.



16022P-L

22in awning hinge with coated arms and coated track. Left handed.



16022-R

22in awning hinge with coated arms and stainless steel track. Right handed.



16022-L

22in awning hinge with coated arms and stainless steel track.



16018P-R

18in awning hinge, powder coated track and arms, right handed.



16018P-L

18in awning hinge, powder coated track and arm, left handed.



16018-R

18in Awning hinge with SS track and coated arms, Right handed.



16018-L

18in awning hinge with SS track and coated arms, left handed.



16014P-R

14" Awning hinge, powder coated track and arms.



16014P-L

14in awning hinge, powder coated arms and track.



16014-R

14" awning hinge with SS430 powder coated arm and SS304 track



16014-L

14" awning hinge with SS430 powder coated arm and SS304 track



16013W-SS-R

13in Washability Hinge - Right



16013W-SS-L

13in Washability Hinge - Left



16013W-SS-K-R

13" Washability Hinge - Stainless Steel - Snap On connection - Right



16013W-SS-K-L

13" Washability Hinge - Stainless Steel - Snap-On connection - Left



16013W-R

13" washability casement hinge with SS430 powder coated arm and SS304 track



16013W-L

13" washability casement hinge with SS430 powder coated arm and SS304 track



16013W-K-R

13" Washability hinge with powder coated arms and snap on connection. Right handed.



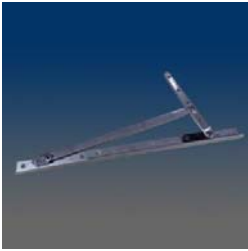
16013W-K-L

13" Washability hinge with powder coated arms and snap on connection.



16013E-SS-LR

adjustable casement hinge, 13", handed



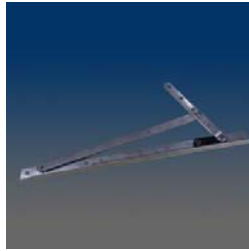
16013E-SS-L

13in Egress casement hinge made with stainless steel material. Clip on connection, left handed.



16013E-SS-K-LR

adjustable casement hinge, 13", handed



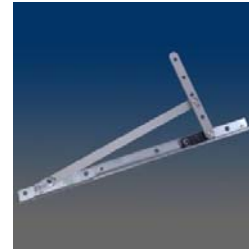
16013E-SS-K-L

13in. Egress casement hinge made with stainless steel material. Snap on connection, left handed.



16013E-R

13in. Egress casement hinge with powder coated arms and clip on connection. Right handed.



16013E-L

13in. Egress casement hinge with powder coated arms. Left handed.



16013E-K-R

13in. Egress casement hinge with powder coated arms and snap on connection. Right handed.



16013E-K-L

13in Egress casement hinge with powder coated arms and clip on connection.



1600SS-R

10" Casement hinge with stainless steel arms and clip on connection. Right handed.



1600SS-L

10" Casement hinge with stainless steel arms, clip on connection.



1600SS-K-R

10in. Casement hinge with stainless steel arms and snap on connections.



1600SS-K-L

10" casement hinge made from stainless steel with clip on connection. Left Handed.



1600SL

10" adjustable casement hinge, left/right hand; Stainless steel track, heavy gauge mild steel arms and powdered coated, adjustable stainless steel screw to help adjust the sash, 1/2" stack height.



1600E-SS-R

10" Egress Casement Hinge - Clip On Connection- Stainless Steel - Right



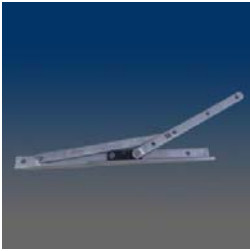
1600E-SS-L

10" Egress Casement Hinge - Clip On Connection- Stainless Steel - Left



1600E-SS-K-R

10" Egress Casement Hinge - Snap On Connection- Stainless Steel - Right



1600E-SS-K-L

10" Egress Casement Hinge - Snap On Connection- Stainless Steel - Left



1600E-R

10" egress hinge with powder coated arms, clip on connection.



1600E-L

10" Egress hinge with powder coated arms and clip on connection. Left handed.



1600E-K-R

10 in. Egress casement hinge with powder coated arms and snap on connection. Right Handed.



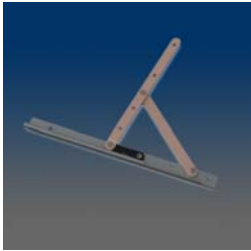
1600-R

10" Standard Casement Hinge - Clip-On Connection - Left



1600-L

10" Standard Casement Hinge - Clip-On Connection - Left



1600-K-R

10 in. standard hinge, snap on connection, right handed.



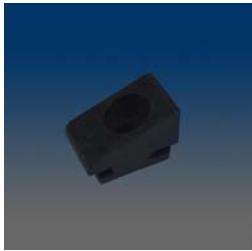
1600-K-LR

casement hinge



1600-K-L

10 in. standard hinge, snap on connection, left handed



14037

Casement Ramp