

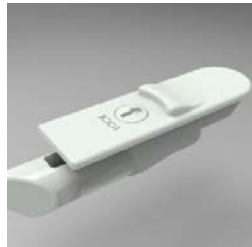


## TILT LATCHES



**CONCEPT 3722B**

Impact submarine tilt latch with locking feature.



**CONCEPT 3722**

Submarine tilt latch with locking feature.



**CONCEPT 3716**

Impact tilt latch concept.



**7397FC-LR**

Tilt latch, flush-mount, flat button, round-ended housing, left. PC housing, soft spring. Except for spring, others are same as 7390



**7391SB-LR**

Tilt latch, flush-mount, sharkfin button, round-ended housing, self-locking, left. PC housing; having 4 types of tongue offsets A/ B/ C/ D; the multiple flexible tabs on the bottom housing can meet different setbacks requests.



**7391-LR**

Tilt latch, flush mount, ask for button styles, round ended housing, lockable, has 4 tongue offsets A/ B/ C/ D; the multiple flexible tabs fit different setbacks



**7390SXS-LR**

Tilt latch, flush-mount, sharkfin button, round-ended housing, right. PC housing; having 4 types of tongue offsets AS/ BS/ CS/ DS; scalloped shape tongue, the multiple flexible tabs on the bottom housing can meet different setbacks requests.



**7390S-LR**

Tilt latch, flush-mount, sharkfin button, round-ended housing, left. PC housing; having 4 types of tongue offsets A/ B/ C/ D; the multiple flexible tabs on the bottom housing can meet different setbacks requests.



**7390RBS-LR**

Tilt latch, flush-mount, raised button, round-ended housing, left. PC housing; having 4 types of tongue offsets AS/ BS/ CS/ DS; scalloped shape tongue, the multiple flexible tabs on the bottom housing can meet different setbacks requests.



**7390R-LR**

Tilt latch, flush-mount, raised button, round-ended housing, left PC housing; having 4 types of tongue offsets A/ B/ C/ D; the multiple flexible tabs on the bottom housing can meet different setbacks request.



**7390FXS-LR**

Tilt latch, flush-mount, flat button, round-ended housing, left. PC housing; having 4 types of tongue offsets AS/ BS/ CS/ DS; scalloped shape tongue, the multiple flexible tabs on the bottom housing can meet different setbacks requests.



**7390EC-LR**

Tilt latch, flush-mount, elliptical button, round-ended housing, left PC housing; having 4 types of tongue offsets A/ B/ C/ D; the multiple flexible tabs on the bottom housing can meet different setbacks request.



**7390-LR**

Tilt latch, flush mount, ask for button styles, has 4 tongue offsets A/ B/ C/ D; rounded end and the multiple flexible tabs for different setbacks



**7383S-SB-L/R**

tilt latch -L/R



**7383R-SB-LR**

tilt latch



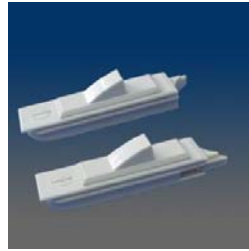
**7382XX**

Tilt latch, flush mount, flat, raised, elliptical or sharkfin button types, has 4 types of tongue offsets A/ B/ C/ D, the multiple flexible tabs on the bottom housing can meet different setbacks



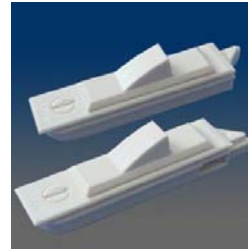
**7382-LR**

Tilt latch, flush mount, ask for button styles, square ended housing, lockable, has 4 tongue offsets A/ B/ C/ D; the multiple flexible tabs on the bottom housing can meet different setbacks.



**7381SBS-LR**

Tilt latch, flush-mount, sharkfin button, square-ended housing, self-locking, left. PC housing; having 4 types of tongue offsets AS/ BS/ CS/ DS; scalloped shape tongue, the multiple flexible tabs on the bottom housing can meet different setbacks requests.



**7381SB-LR**

Tilt latch, flush-mount, sharkfin button, square-ended housing, self-locking, left. PC housing; having 4 types of tongue offsets A/ B/ C/ D; the multiple flexible tabs on the bottom housing can meet different setbacks requests.



**7381RBS-LR**

Tilt latch, flush-mount, raised button, square-ended housing, self-locking, left. PC housing; having 4 types of tongue offsets AS/ BS/ CS/ DS; scalloped shape tongue, the multiple flexible tabs on the bottom housing can meet different setbacks requests.



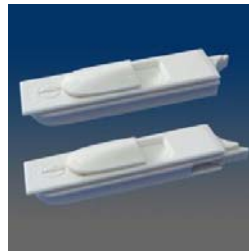
**7381RB-LR**

Tilt latch, flush-mount, raised button, square-ended housing, self-locking, left PC housing; having 4 types of tongue offsets A/ B/ C/ D; the multiple flexible tabs on the bottom housing can meet different setbacks request.



**7381FBS-LR**

Tilt latch, flush-mount, flat button, square-ended housing, self-locking, left. PC housing; having 4 types of tongue offsets AS/ BS/ CS/ DS; scalloped shape tongue, the multiple flexible tabs on the bottom housing can meet different setbacks requests.



**7381EBS-LR**

Tilt latch, flush mount, elliptical button, square ended housing, self locking, left. PC housing; having 4 types of tongue offsets AS/ BS/ CS/ DS; scalloped shape tongue, the multiple flexible tabs on the bottom housing can meet different setbacks request.



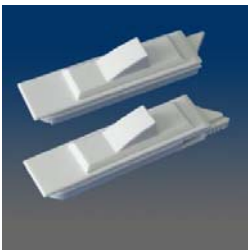
**7381EB-LR**

Tilt latch, flush-mount, elliptical button, square-ended housing, self-locking, left PC housing; having 4 types of tongue offsets A/ B/ C/ D; the multiple flexible tabs on the bottom housing can meet different setbacks request.



**7381-LR**

Tilt latch, flush mount, ask for button styles, square ended housing, self locking, has 4 types of tongue offsets A/ B/ C/ D; the multiple flexible tabs on the bottom housing can meet different setbacks request.



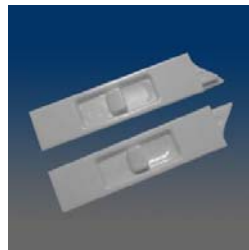
**7380S-LR**

Tilt latch, flush mount, shark fin button, square ended housing, left. PC housing; having 4 types of tongue offsets A/ B/ C/ D; the multiple flexible tabs on the bottom housing can meet different setbacks request.



**7380RXS-LR**

Tilt latch, flush-mount, flat button, square-ended housing, left PC housing; having 4 types of tongue offsets A/ B/ C/ D; the multiple flexible tabs on the bottom housing can meet different setbacks request.



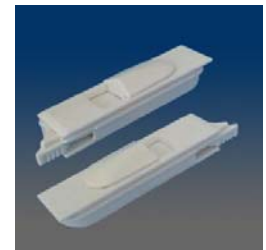
**7380RB-LR**

Tilt latch, flush-mount, raised button, square-ended housing, left PC housing; having 4 types of tongue offsets A/ B/ C/ D; the multiple flexible tabs on the bottom housing can meet different setbacks request.



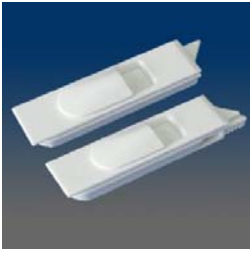
**7380FXS-LR**

Tilt latch, flush-mount, elliptical button, square-ended housing, right. PC housing; having 4 types of tongue offsets AS/ BS/ CS/ DS; scalloped shape tongue, the multiple flexible tabs on the bottom housing can meet different setbacks requests.



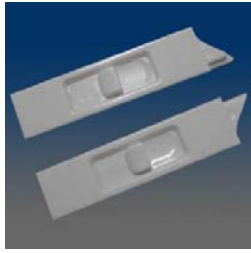
**7380EBS-LR**

Tilt latch, flush-mount, elliptical button, square-ended housing, right. PC housing; having 4 types of tongue offsets AS/ BS/ CS/ DS; scalloped shape tongue, the multiple flexible tabs on the bottom housing can meet different setbacks requests.



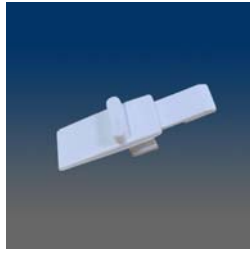
### 7380E-LR

Tilt latch, flush-mount, elliptical button, square-ended housing, left PC housing; having 4 types of tongue offsets A/ B/ C/ D; the multiple flexible tabs on the bottom housing can meet different setbacks request.



### 7380-LR

Tilt latch, flush mount, ask for button styles, has 4 tongue offsets A/ B/ C/ D; square end and the multiple flexible tabs for different setbacks



### 7304-03A

tilt latch button



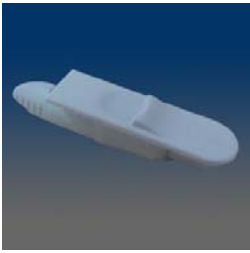
### 7302

Tilt latch, flush mount, non-handed



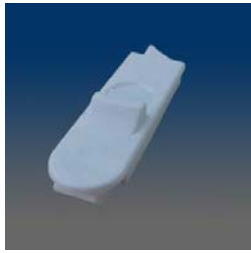
### 7301

Tilt latch, flush mount, non-handed, round housing



### 7220-LR

Tilt latch, raised button, flush mount, round tongue



### 7203-LR

Tilt latch, high button, flush mount



### 7200-LR

Tilt latch with raised button, flush-mount, left & right, with a square corner, with high design pressure ratings



### 7122-LR

integrated tilt latch, handed



### 7120A-LR

integrated tilt latch, handed



### 7120-LR

Tilt Latch for Lock/Tilt Combo, works with 3263A for vinyl window



### 7111

Tilt Latch for Lock/Latch Combo, works with 3272 for foam window



### 7110

Tilt Latch for Lock/Latch Combo, works with 3250L/R and 3252L/R for a wood window



### 7108-LR

integrated tilt latch



### 7107-LR

integrated tilt latch, handed



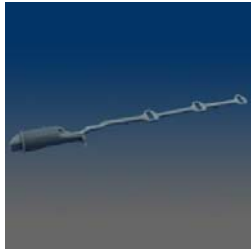
**7106-LR**

Integrated tilt latch for Lock Tilt, handed



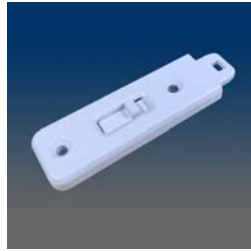
**7104-LR**

Tilt Latch for Lock/Latch Combo, works with 327L/R for vinyl window



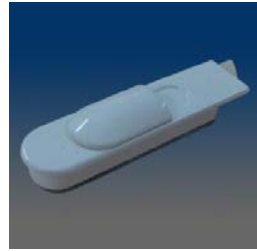
**7100-LR**

Tilt Latch for Lock/Latch Combo for vinyl window



**2893**

impact tilt latch, zinc, works with 2511



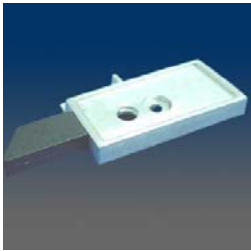
**2886-LR**

Tilt latch, flush mount, zinc housing, handed, similar to 2861 but with elliptical button



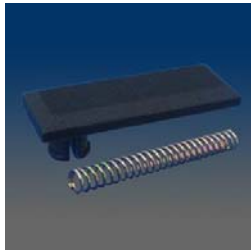
**2876-LR**

tilt latch, zinc, screw mount, handed



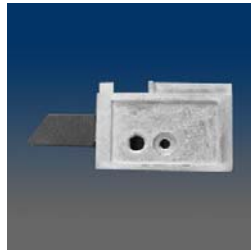
**2868**

Tilt latch, surface mount, left or right, match with 2866L and 2867



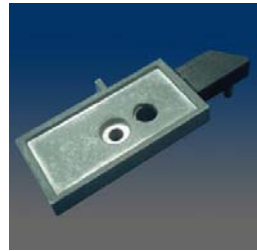
**2867**

Tilt latch cover, plastic, spring attached



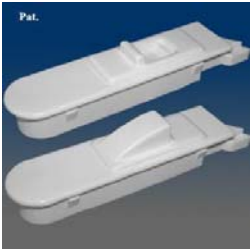
**2865**

Tilt latch, surface mount, zinc, left or right, match with 2866L and 2867



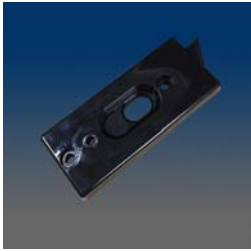
**2864**

Tilt latch, surface mount, with a plastic tongue cover, zinc, left or right, attached plastic cover 2867



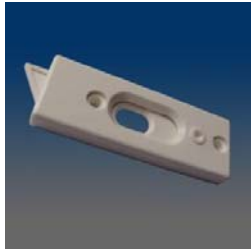
**2860-LR**

Tilt latch, flush mount, snap in, ask about button styles, round ended housing



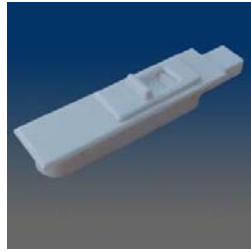
**2831A-LR**

Tilt Latch, Surface Mount, handed, lockable w/ tri-wing



**2831-LR**

Tilt Latch, Surface Mount, handed, lockable w/ tri-wing



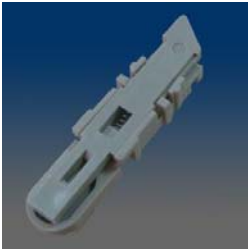
**2829**

Tilt latch, flush mount



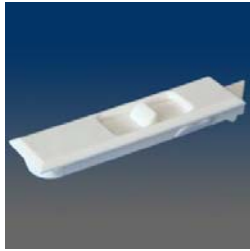
**2827**

button for 2826



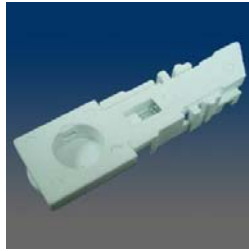
**2826-LR**

Tilt latch, internal, 2820 housing and new tongue, handed



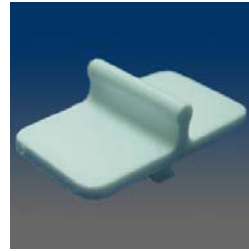
**2823-LR**

Tilt latch, thin, flush mount, handed



**2822-LR**

Tilt latch, internal, handed



**2821**

Pull button, nylon, for 2822



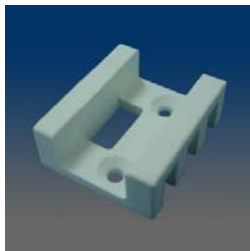
**2819**

Tilt latch for impact, surface mount, 2.508" hole space, zinc die cast, lockable



**2818**

Tilt latch for impact, surface mount, 2.437" hole space, zinc die cast, lockable



**28171**

Keeper with no tab



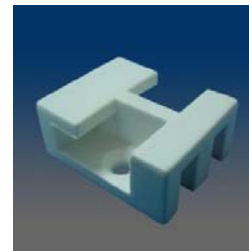
**2817**

Keeper match for 2816



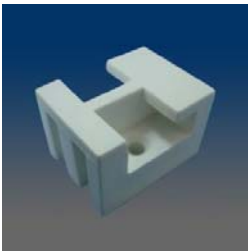
**2816-LR**

Tilt latch for impact, surface mount, 2.504" hole space, zinc die cast, handed



**28153**

Keeper match for 28151, small



**28152**

Keeper match for 28151, large



**28151-LR**

Tilt latch for impact, surface mount, 2.244" hole space, zinc die cast, handed



**2812**

Tilt latch, surface mount, 2" hole space, zinc housing, square end tongue



**2811-LR**

TILT LATCH, SURFACE MOUNT, SQUARE HOUSING, HANDED



**2808-LR**

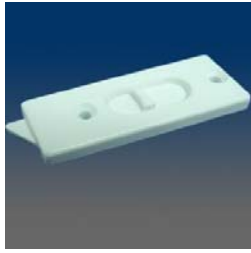
Tilt latch, surface mount, 1.375" hole space, #6 screw, handed





**2807-LR**

Tilt latch, surface mount, 1.811" hole space, handed



**2806-LR**

Tilt latch, surface mount, 2.02" hole space, handed



**2804-LR**

Tilt latch, surface mount, 2.01" hole space, handed



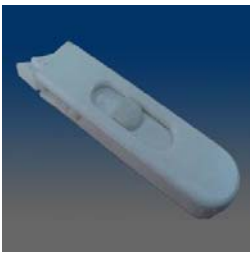
**2801-LR**

Tilt latch, surface mount, 2.06" hole space, handed



**2800-LR**

Tilt latch, surface mount, 2.33" hole space, handed



**2797-LR**

Tilt latch, flush mount, round ended housing, soft spring



**2794E-LR**

Tilt Latch, Round Housing, elliptical button



**2791-LR**

Tilt latch, flush mount, ask about button styles, round ended housing, lockable



**2790-LR**

Tilt latch, flush mount, button styles shown, round ended housing



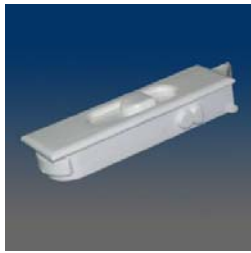
**2781-LR**

Tilt latch, flush mount, ask about button styles, square ended housing, lockable



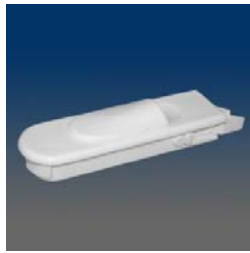
**2780-LR**

Tilt latch, flush mount, square ended housing, Inquire about various buttons and offsets.



**2698-LR**

Tilt latch, flush mount, square ended housing, left or right handed



**2694-LR**

Tilt latch, flush mount, elliptical button, tongue offset "C", special round ended housing, available in left or right handed



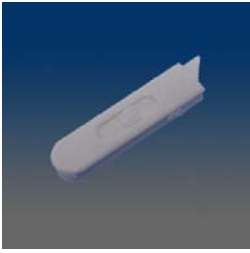
**2693EB-LR**

Tilt latch, flush mount, elliptical button, tongue offset "B", special round ended housing with screw locator, matte finish, available in left and right handed



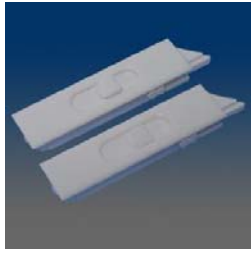
**26931-LR**

Tilt latch, flush mount, elliptical button, special round ended housing with screw locator, matte finish, available in left or right handed



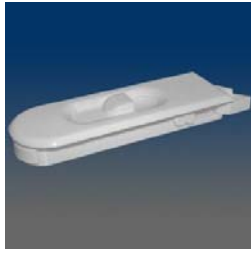
**2690-LR**

TILT LATCH



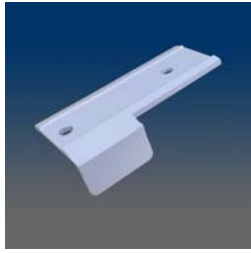
**2680-LR**

Tilt latch, flush mount, square ended housing, inquire about various buttons and offsets, available in left or right handed



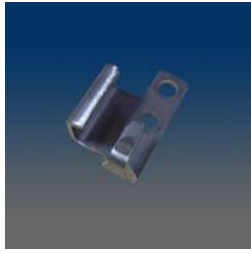
**2640-LR**

Tilt latch, flush mount, raised button, Inquire about offsets, bottom setback 1", available in left or right handed



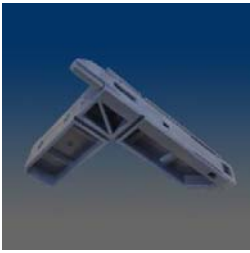
**2512-LR**

tilt latch cleat



**2511-LR**

keeper for 2893 tilt latch



**11101A**

Screen corner with tongue assembly.