



Aribell
The Leader in Door & Window Components

Aribell Products Limited
380 Four Valley Drive
Vaughan ON L4K 5Z1
Tel: 905.669.5001 Fax: 905.669.5030
www.aribell.ca

PATIO DOOR



S510-1472

S510 Screen Lock w/1472 Pull Handle



S509-1472

S509 Screen Lock w/ 1472 Pull Handle



PR901SS

Patio roller, tandem wheels, SS.



PR900SS

Patio Roller, tandem wheels, SS



PR800D

Adjustment Roller



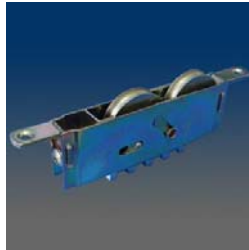
PR627-S1

patio door roller



PR616C

Tandem roller, patio door, end-adjustable, yellow dichromate, 1.25" wheel diameter, with aluminum spacer added on PR610C



PR615D

improved PR616C



PR613D

Tandem roller, patio door, end-adjustable, yellow dichromate, 1.5" wheel diameter, with dimples at side body



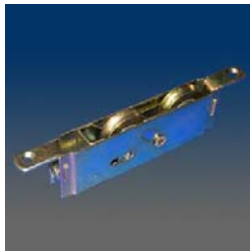
PR612C

Tandem roller, patio door, end-adjustable, yellow dichromate, 1.25" wheel diameter, .69" housing width, with support-foot and support-top plate



PR611C

Tandem roller, patio door, end-adjustable, yellow dichromate, 1.25" wheel diameter, 1.375" washer



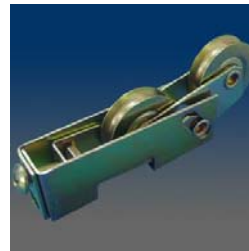
PR610C

Tandem roller, patio door, end-adjustable, yellow dichromate, 1.25" wheel diameter



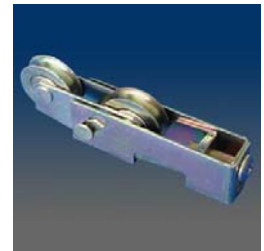
PR606C

Tandem roller, patio door, end-adjustable, yellow dichromate, 1.25" wheel diameter, with installation screw 10065 unattached



PR604C

Tandem roller, patio door, end-adjustable, yellow dichromate, 1.25" wheel diameter, .69" housing width



PR604B

Tandem roller, patio door, end-adjustable, yellow dichromate, 1.125" wheel diameter, side mount only, .69" housing width



PR602D

Tandem roller, patio door, end-adjustable, yellow dichromate, 1.5" wheel diameter



PR602C

Tandem roller, patio door, end-adjustable, yellow dichromate, 1.25" wheel diameter



PR602B

Tandem roller, patio door, end-adjustable, yellow dichromate, 1.125" wheel diameter, improved wheel groove



PR602A

Tandem roller, patio door, end-adjustable, yellow dichromate, 1" wheel diameter



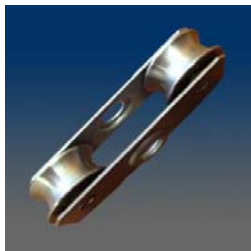
PR601C

Tandem roller, patio door, side-adjustable, yellow dichromate, plastic wheel, 1.25" wheel diameter, .72" housing width, new bearing



PR600C

Tandem roller, patio door, side-adjustable, yellow dichromate, 1.25" wheel diameter, .72" housing width



PR500

SASHCAP/ROLLER HOUSING BK



PR2001

SASHCAP/ROLLER HOUSING BK



PM551

Spacer for PM550 Keeper



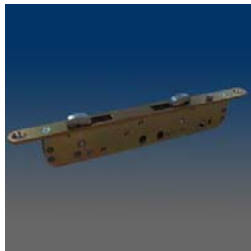
PM550

2 point zinc keeper for use with PM540



PM544SS

DOUBLE POINT STAINLESS STEEL MORTISE



PM543

Mortise, double point, narrow width, and square notch.



PM540

2 point mortise for use with PD1120 handle set and PM550 keeper



PM539SS

2 point mortise - stainless, 1.25"



PM538

2 point keeper, 1"



PM537-SS

2 point keeper, 0.807", SS

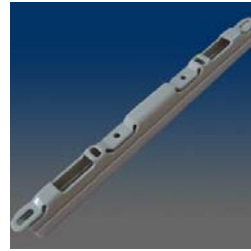


PM537



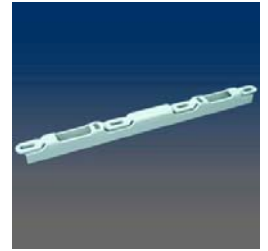
PM535

2 point keeper, 0.512"



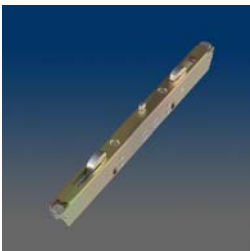
PM530A

2 point keeper, 1", PM530A with
2pcs H spacers attached



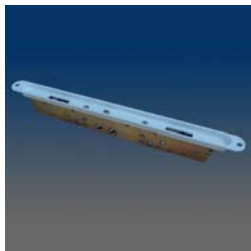
PM530

2 point keeper, 0.75"



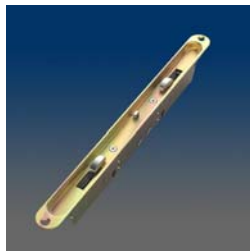
PM522D

2 point mortise w/ anti-slam,
short plate



PM522C1

2 point mortise w/ anti-slam,
custom cupped plate



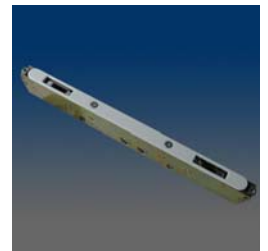
PM522C

2 point mortise, anti-slam,
cupped plate



PM522A

2 point mortise w/ anti slam,
standard flat plate



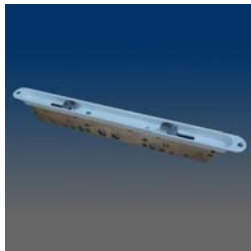
PM520D

2 point mortise, short plate



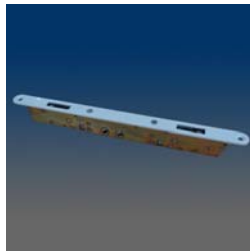
PM520C1

2 point mortise



PM520C

2 point mortise, cupped plate



PM520A

2 point mortise, standard flat
plate



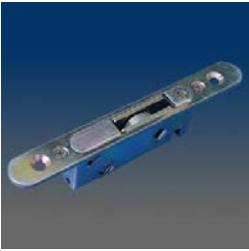
PM515

Mortise, single point, yellow
dichromate, w/o top plate,



PM510A

single point mortise, no
faceplate, deeper set pin socket



PM510

single point mortise, standard flat plate, deeper set pin socket



PM500C

single point mortise, cupped plate



PM500B

single point mortise, custom flat plate



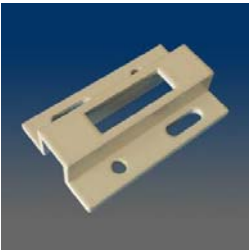
PM500A

single point mortise, no faceplate



PM500

single point mortise, standard flat plate



PM473

Keeper, aluminum, .55" height, 2" length based on PM462 extrusion, for single point mortise



PM471

Keeper, aluminum, .68" high, for single point mortise



PM466

Keeper, aluminum, extruded, .675" high, for double point mortise



PM463

Keeper, aluminum, extruded, .675" high, for double point mortise



PM462

Keeper, aluminum, extruded, .55" high, for double point mortise



PM461

Keeper, aluminum, extruded, .8" high, for double point mortise



PM460

Keeper, aluminum, .6" high, for single point mortise



PM450

single point keeper, zinc, 0.5"



PM440

single point keeper, steel, 0.118" thick



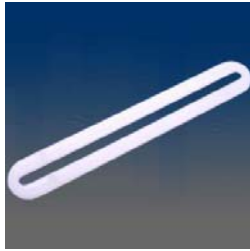
PM431SS

single point keeper, stainless steel, 0.669"



PM430

single point keeper, steel,
0.461"



PM411

spacer for PM410, 0.09" thick



PM410

single point keeper, zinc, 0.44"



PM400

single point keeper, zinc, 0.685"



PM2101SS

multipoint keeper



PM2100SS

multi point locking hardware



PM1101

Multipoint PD System



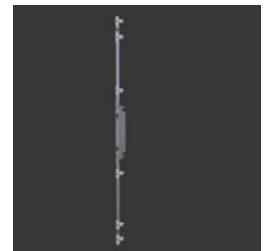
PM1100SS-21

multi point locking hardware



PM1100-20

Multi Point PD Driving Box



PM1100

Multi Point patio door locking
system



PM1000

Multi Point PD mortise locking at
three points.



PD4000

Handle set, patio door, zinc
handles combination of exterior
PD1103 and interior PD4020



PD3020

Olympus handle set, patio door,
zinc loop handles, without
keyed lock and lever, , dummy
set of PD3000 series



PD3000

Olympus handle set, patio door,
zinc loop handles with keyed
lock and lever



PD2110

Handle set, patio door, zinc C
loop handle with keyless lock
and lever, others are same as
PD2010



PD2020

Legacy handle set, patio door, zinc C loop handles without keyed lock and lever, dummy set of PD2000 series



PD2010

Legacy handle set, patio door, zinc C loop handles with keyless lock and lever



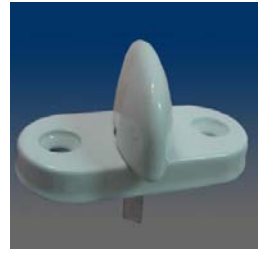
PD2000

Legacy handle set, patio door, zinc C loop handles with keyed lock and lever



PD1700

Handle set, patio door, for US western market, zinc loop handles, locked in upper location, with cylinder and lever



PD1630

Secondary mortise lock, with mounting screw 2pcs 10035, installed clip and installed instruction sheet in the kit



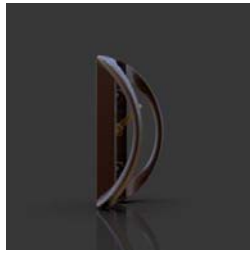
PD1600

Handle set, patio door, for US western market, zinc loop handles, locked in middle location, with cylinder and lever



PD1560

patio door handle set, aluminum



PD1540

PD handle available in Aluminum or zinc material with the option to be keyed or non-keyed.



PD1530

Handle set, patio door, aluminum, exterior wing and interior loop handles



PD1520

Handle set, patio door, aluminum, exterior wing and interior D loop handles



PD1510

Patio door aluminum handle, exterior wing and interior D loop handles with keyless lock



PD1430

PATIO DOOR HANDLE SET



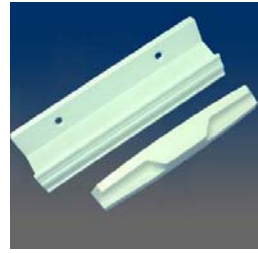
PD1420

Handle set, patio door, exterior zinc wing and interior zinc loop handles with lock



PD1400

PATIO DOOR HANDLE SET



PD1300

Handle set, patio door, molded plastic exterior wing, and extruded aluminum interior handle without lock



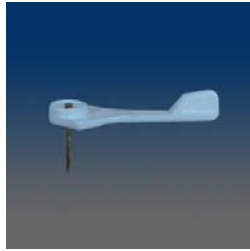
PD1120

handle set for use with PM540 & PM550, center hole only



PD1100

Handle set, patio door, interior wood bar and exterior zinc wing handles with keyless lock



PD1007

PD Handle with Thumb Lever



PD1005

Keeper, zinc die-casting, powder coated, cast mounting slots, .66" high



PD1000

Handle set, patio door, wood bar and zinc loop handles with keyless lock



PC011C

Keyset, similarly keyed, bright chromed cylinder head, total length without finished head is 2.2795", used for PD2000



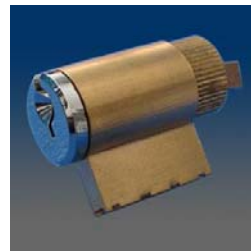
PC011B

Keyset, differently keyed, brass cylinder head, total length without finished head is 2.2795", used for PD2000



PC002C

Keyset, differently keyed, brass cylinder head, total length without finished head is 2.2795", used for PD2000



PC001E

Keyset, differently keyed, bright chromed cylinder head, total length without finished head is 1.4646", used for PD1320



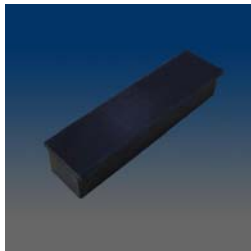
PB100

Lock, flush, patio door, with rod PB101



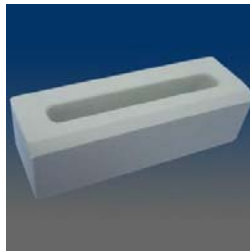
PB020

plastic patio door bumper, screw mount, 2.63"



PB012

rubber patio door bumper



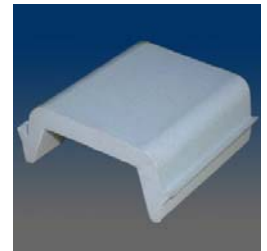
PB011

Bumper, rubber, molded rectangular, 3.5" long



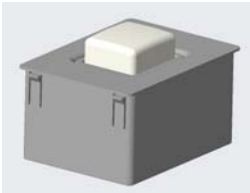
PB002

Bumper, rubber, 4" channel



PB001

Bumper, rubber, 2" channel



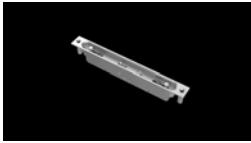
CONCEPT 4086B

Adjustable patio door stop.



CONCEPT 3293

patio door handle set



CONCEPT 2987

Conceptual dual point mortise w/ keeper.



CONCEPT 2827

Patio Door Handle Set



CONCEPT 2612

Patio Door Handle Set



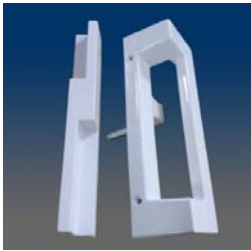
CONCEPT 2429A

Patio Door Handle Set



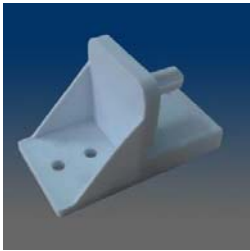
CONCEPT 1825

Patio Door Handle Set



APD1810

Patio door clip



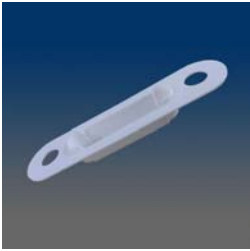
5126

Patio door clip



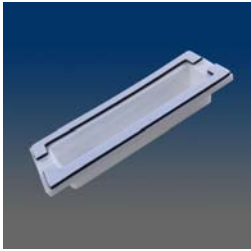
5110

1. Patio Door Stop



2206

patio door cover



2205

patio door cover



1549A*1456

secondary lock kit for head



1549A

secondary lock for head



1549*1100

secondary lock kit for sill