



MISCELLANEOUS



CONCEPT 4055D

disposable shipping handle



7707

spring clip, steel



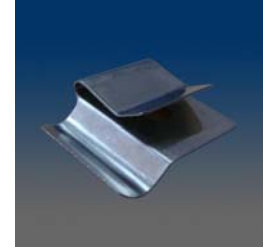
7706

spring clip, steel



7705

Awning clip, with screw installed



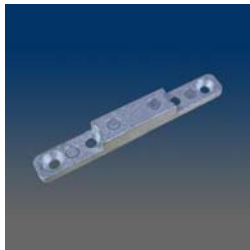
7702

spring clip, stainless steel



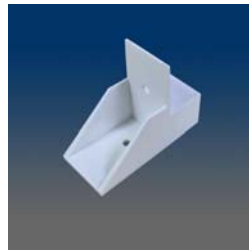
6928

L bracket, steel



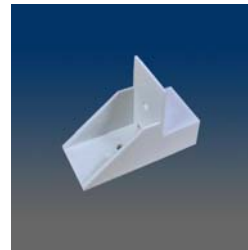
5248

mullion clip, zinc



52471-SB

sash clip



52470-SB

sash clip



5246

connector plate, steel



52453

tilt turn clip, stainless steel



52452

tilt turn clip, stainless steel



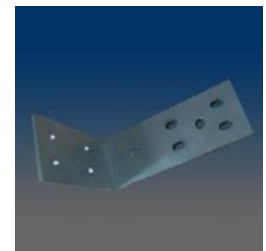
52451-LR

tilt turn clip, handed, stainless steel



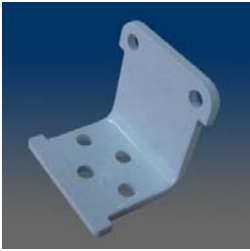
5232

shipping block, plastic



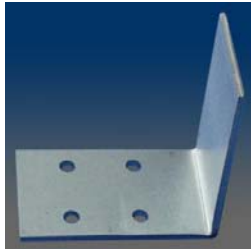
5223

angle plate, aluminum



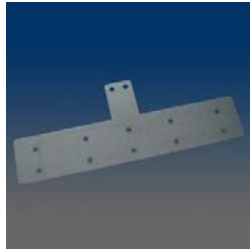
5222

angle bracket, stainless steel



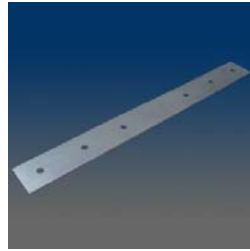
5216

angle plate, steel



5215

Steel plate, .032" thick
galvanized steel



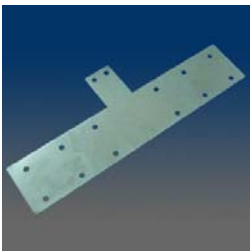
5214

connector plate, steel



5213

connector plate, steel



5211

connector plate, steel



5209

end plate, steel



5208

connector plate, steel



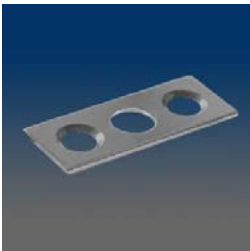
5205

strike plate, stainless steel



5204

strike plate, stainless steel



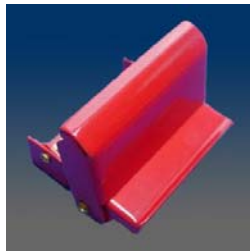
5203

strike plate, steel



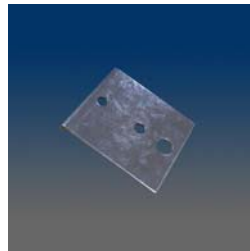
5201

locking latch, steel, red



5200

locking latch, steel, red



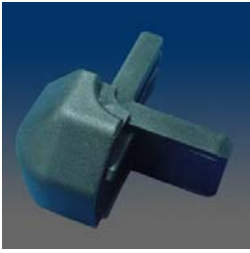
5140

jamb mounting bracket



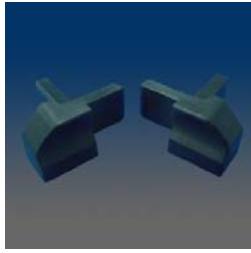
5123

truck parts, plastic corner



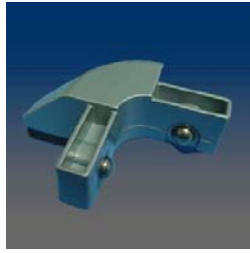
5122

truck parts, plastic corner



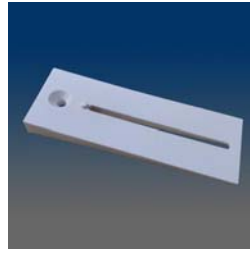
5121-LR

truck parts, plastic corner,
handed



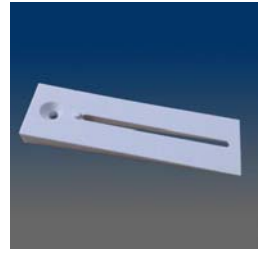
5120

truck parts, zinc corner



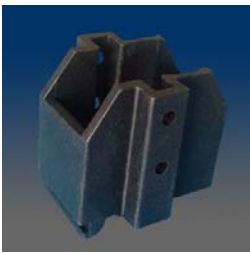
5112

setting block - 1.5"



5111

setting block - 1"



5108

shear block, plastic



5105

screw block, plastic



5104

screw block, plastic



5100

rod baseplate



2SS

double skewer



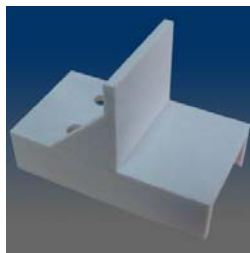
2997

screw anchor



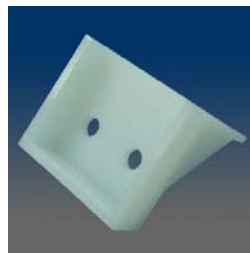
2992

glide tab



2991E

dead lite anchor, plastic



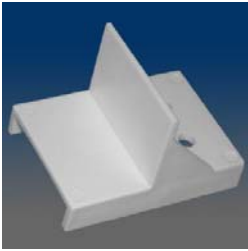
2991C

dead lite anchor, plastic



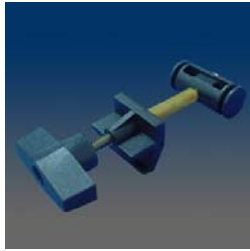
2991B

dead lite anchor, plastic



2991

dead lite anchor, plastic



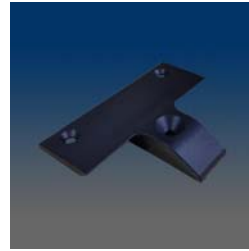
2502

truck hardware, clamp
assembly



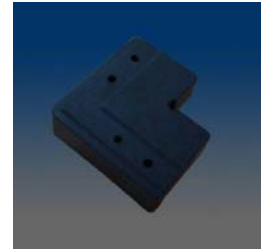
2500

truck hardware, clamp
assembly



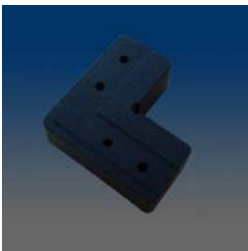
2425

meeting rail wedge



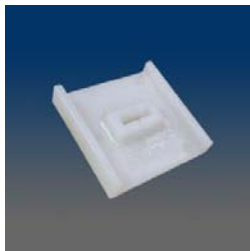
2424

door corner key, plastic



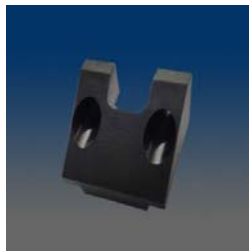
2423

door corner key, plastic



2422A

spring block



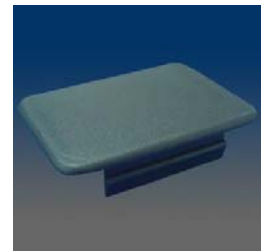
2421

sash stop



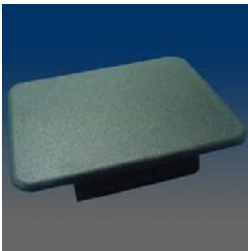
24084

truck hardware - end cap



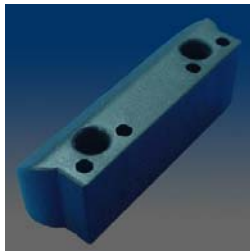
24083

truck hardware - end cap



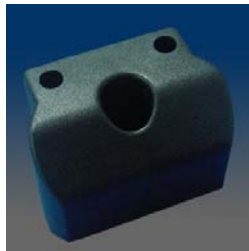
24082

truck hardware - end cap



2405

truck hardware - end cap



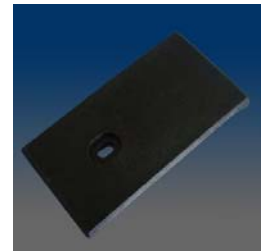
2404

truck hardware - end cap



2400

latch



2264

cover plate, plastic



2263

screw head cap (ATR# 8020600820)



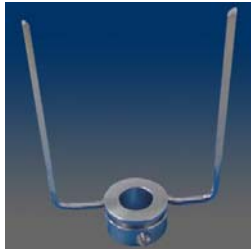
2253-L & R

threshold boot



2231

mullion connector



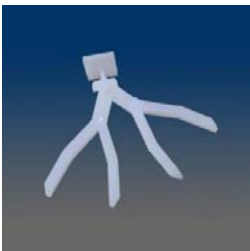
155

SINGLE SKEWERS



19902

diamond clip with 9/16" wishbone connector



19901

diamond clip with 5/8" wishbone connector



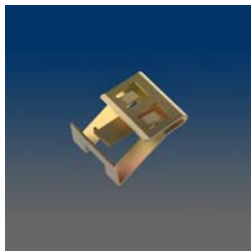
1982

5/8 THREAD DECRA CLIP, based on 1972, w/ threaded pole, natural color



1981

3/8 THREAD DECRA CLIP, based on 1971, w/ threaded pole, natural color



1974

window installation clip



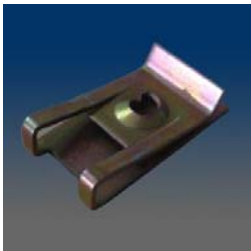
1972

Based on 1962 revised the opening: from 6.7mm to 5.1mm



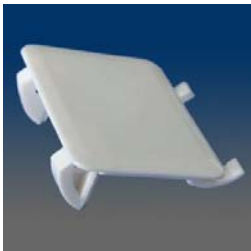
1971

Clip



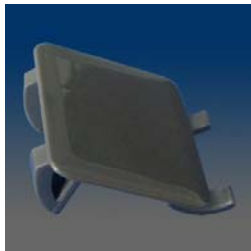
1970

screw clip, steel



1967

Hole plug, for vinyl thickness from 0.04" to 0.14", anti-UV, similar to 1966



1966

Hole plug, for vinyl thickness from 0.04" to 0.14", anti-UV



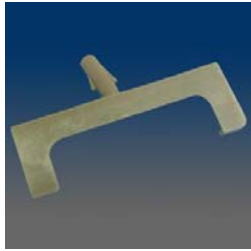
1964

DECRA-LITE GRID CLIP 1"



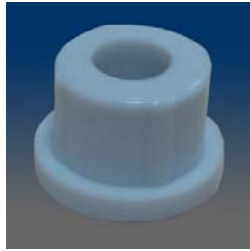
1962

DECRA-LITE GRID CLIP 5/8



1961

DECRA-LITE GRID CLIP 3/8



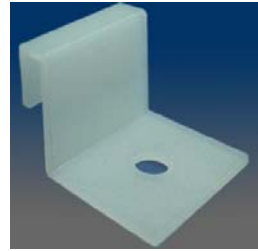
1960

BUSHING WITH 0.250" THRU
HOLE



19591

meeting rail clip, zinc, handed



1957

Screw-in sash guide, nylon



19557

Dust plug



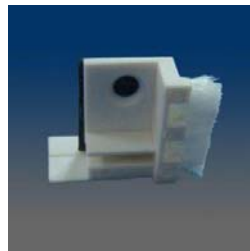
19556-LR

dust plug, #4 hole, handed



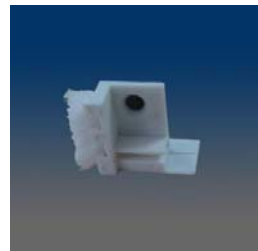
19555-L/R

177 Dust Plug Left/ Right



19553R

DUST PATCH PLATE/WITH
ADHESIVE RIGHT



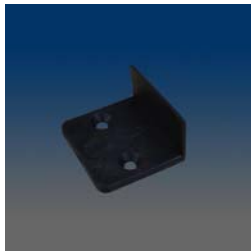
19553L

DUST PATCH PLATE/WITH
ADHESIVE LEFT



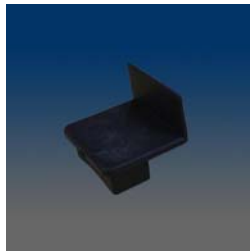
19547

rubber plug



19546

rubber plug



19545

rubber plug



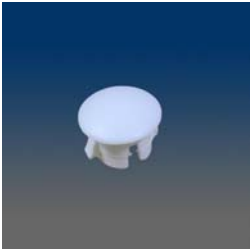
19544-SB

1/2" hole plug



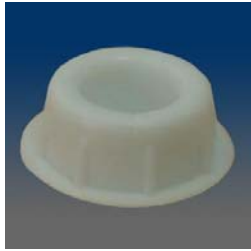
19543-SB

3/8" hole plug



19542-SB

1/4" hole plug



19541

Hole plug, plastic, with extended ribs



1954

HOLE PLUG



1952

Installation hole plug, plastic



1949

Installation hole plug, plastic, based on 1952, the diameter of the hole changed to 3/8" and the snap ramps on both sides have been removed



1948

Sill pad with weatherstrip



1947

Head pad with weatherstrip



1946

Handle cap, left, black, used in pairs



1615SS

Cup washer, material is 300 series stainless steel



1560

Strap Anchor, plate



1559SS

CW Upper Sash Bracket



1558

Keeper shim



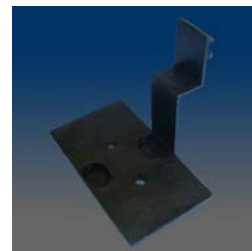
1554

Shipping clip for heavy weight window



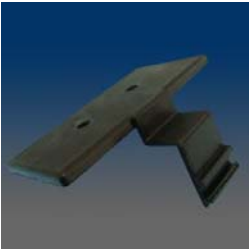
1552

Awning shim



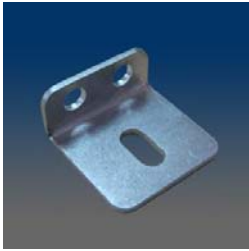
1541

Fixed panel top bracket, plastic, similar to 1539



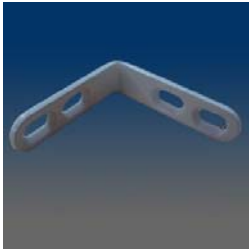
1539

Fixed panel top bracket, plastic



1531A

Security bracket, steel, white zinc plated, replacing 1531



1530A-0

Fixed panel bracket, steel, powder-coating, without screws, replacing 1530



1530

Fixed panel bracket, steel, powder-coating, with screws included



1514

Shipping clip for light weight window



1507

Twinbolts Shootplug



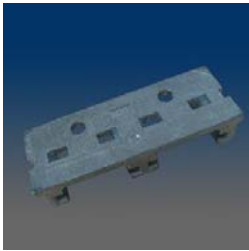
1506

Double Shootplug



1505

Single Shootplug



1504

Zinc Double Gib



1503

Zinc Single Gib



1502

Shelf Bracket



1501

Shelf Bracket



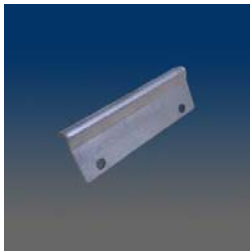
14933

Frame Clip



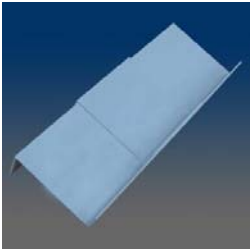
14932A

"L" plate, SS



14931

Top Clip



1480

Sill Pan Connector



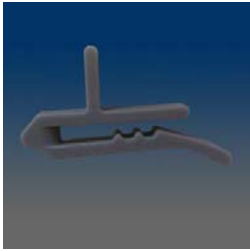
14741

GT Lock shim, 0.06" thick



14740

GT lock shim, 0.03" thick

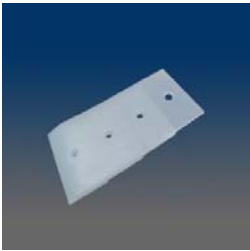


1461



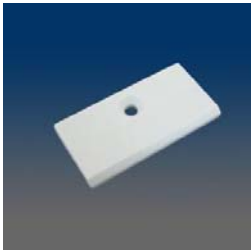
1455

Sliding assembly



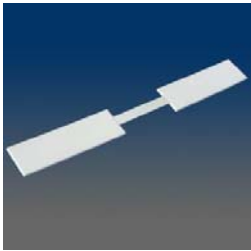
1453

Inner post shim



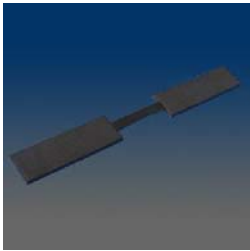
1452

Spacer for sash



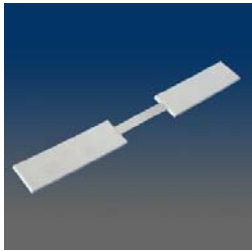
1438

Glazing packer corner, flat,
width 30mm, thickness 3mm



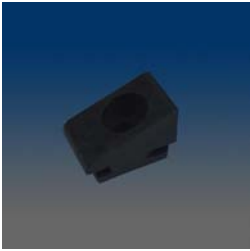
1437

Glazing packer corner, flat,
width 30mm, thickness 5mm



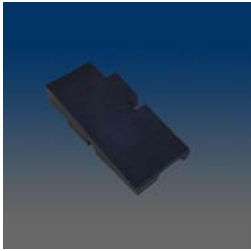
1436

Glazing packer corner, flat,
width 30mm, thickness 4mm



14307

ramp block



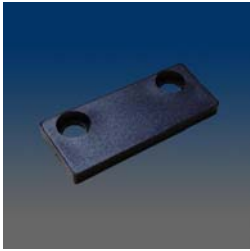
14306-L & R

ramp block



14305

strike plate

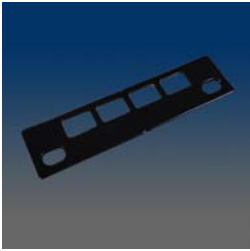


14304

cam handle plate

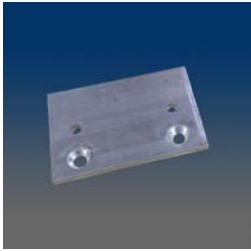


14303SS



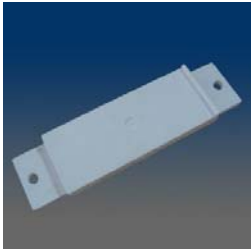
14302SS

strike plate



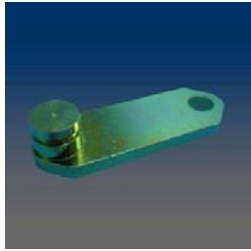
14301

aluminum plate



1424

Air seal block, PVC



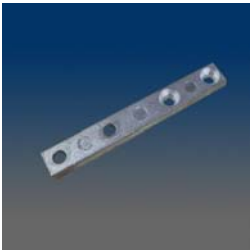
1419

Steel connect plate, yellow chromated, for RV window



1413

Pass through clip, zinc, mill finish



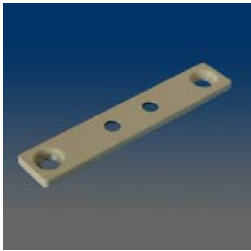
14112

connector plate, zinc



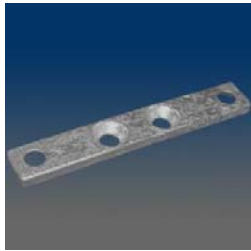
14104

Meeting rail block, width 0.320"



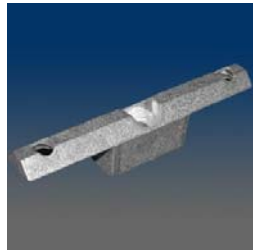
14103

Mullion connector, width .515", zinc, powder-coating, similar to 14102



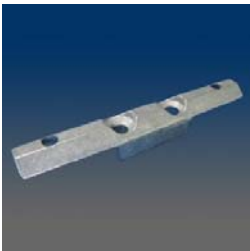
14102

Keeper rail adapter, zinc, mill finish



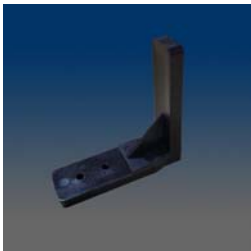
14101

Meeting rail anchor, zinc, mill finish



1410

Meeting rail anchor, zinc die-cast



14014

bracket, glass filled nylon



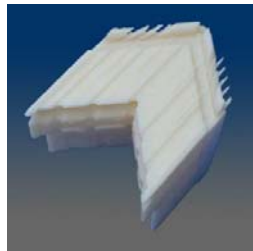
1316-0000

(6015000034)13/16", MUNTIN JOINER



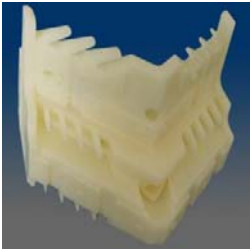
1126

Corner, used on sash, double hung/ double sliding window, apply on CT 606 profile



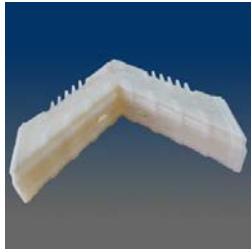
1122

Corner, casement/ awning picture window, apply on CT22 profile



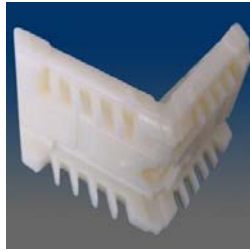
1121

Corner, used on sash, casement/ awning window, apply on CT21 profile



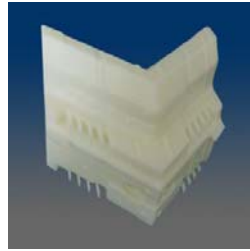
1119

Corner, used on sash, apply on sash SV104 of 1100 series window



1116

Corner, used on sash, double hung/ double sliding window, apply on CT06 profile



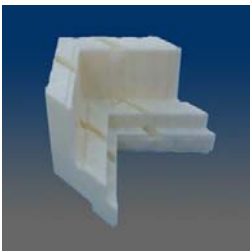
1115

Corner, double sliding window, apply on CT505 profiles



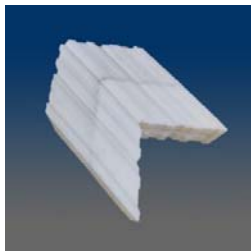
1114

Corner, double hung/ picture window, apply on CT504 profile



1113

Corner, apply on frame SV100 of 1100 series window



11121

Door Corner Key



11101

Corner Key 1110A & 1110B



11091

Casing corner, 3.5"



1107

Frame Corner



1106

Corner key



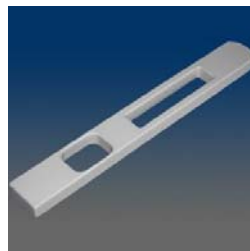
11041

3-way connector



1082

Pin with screw, aluminum pin assembled with SS screw



1057

Slide bolt, zinc



10512

Storm door corner used for aligning glazing leg, nylon composite.



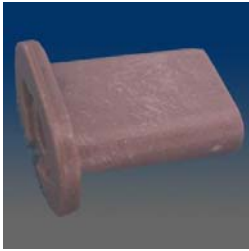
10511

Corner for storm window glass panel



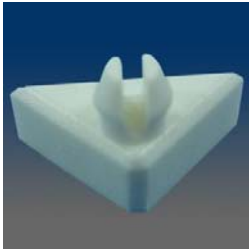
1018

Plug, intermediate jamb, plastic



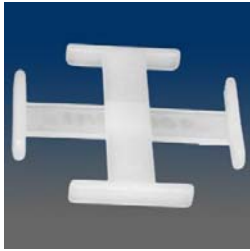
1017

Plug, intermediate jamb, plastic



1013

Triangular plug, intermediate jamb, PVC



0508-0000

Muntin joiner 5/8 "